

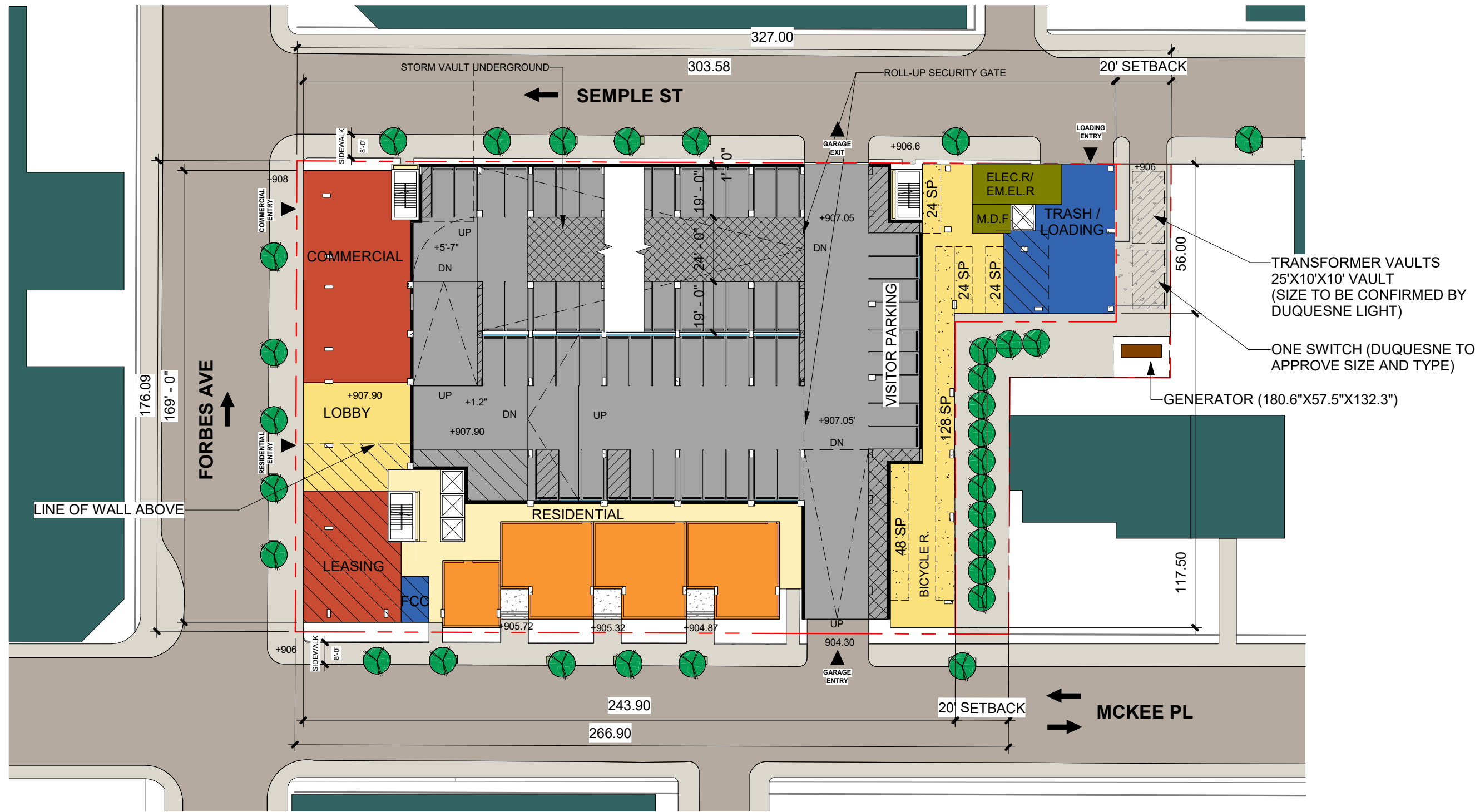
design

dwell

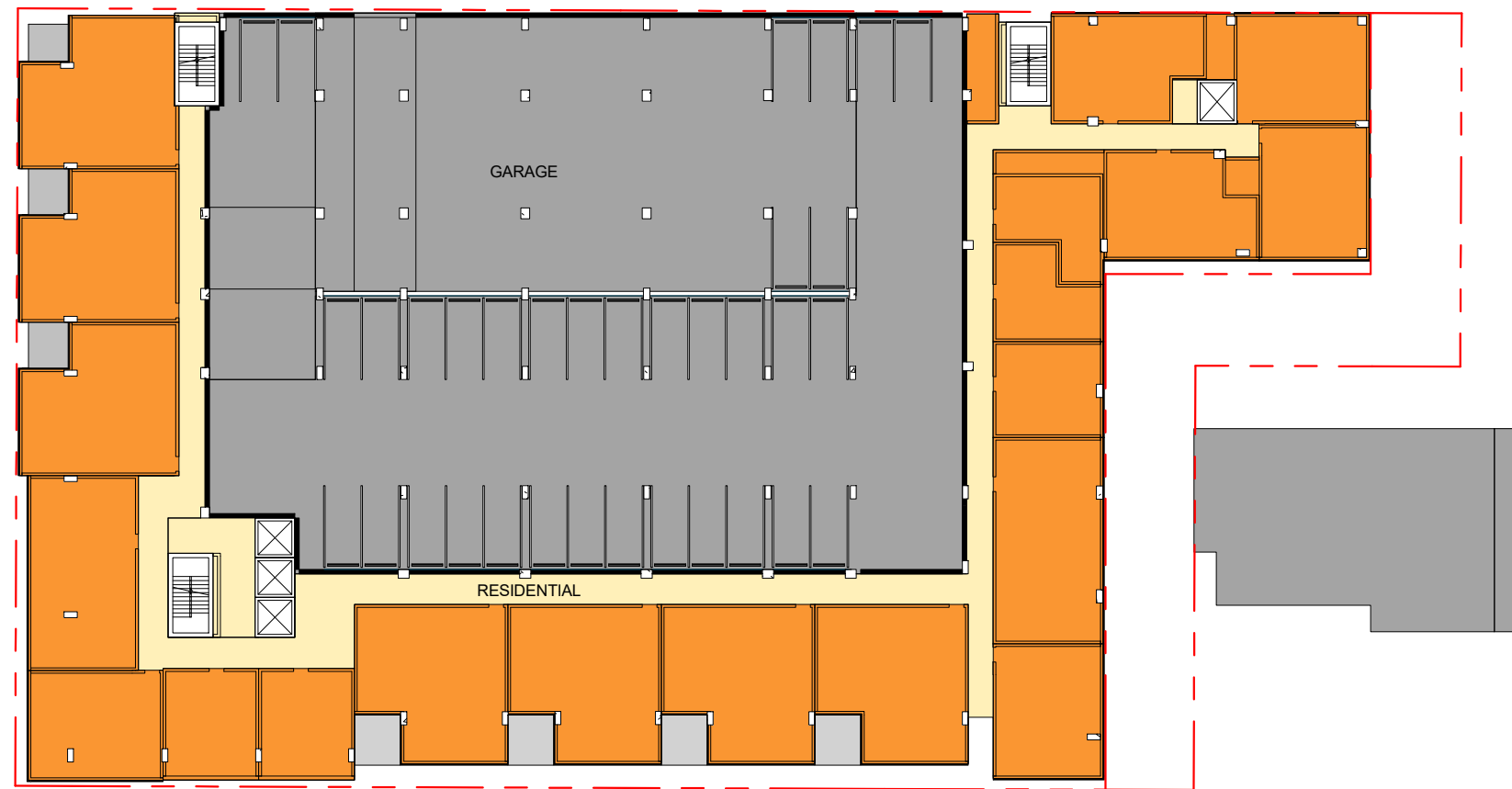
3500 Forbes Ave.

Pittsburgh, Pennsylvania

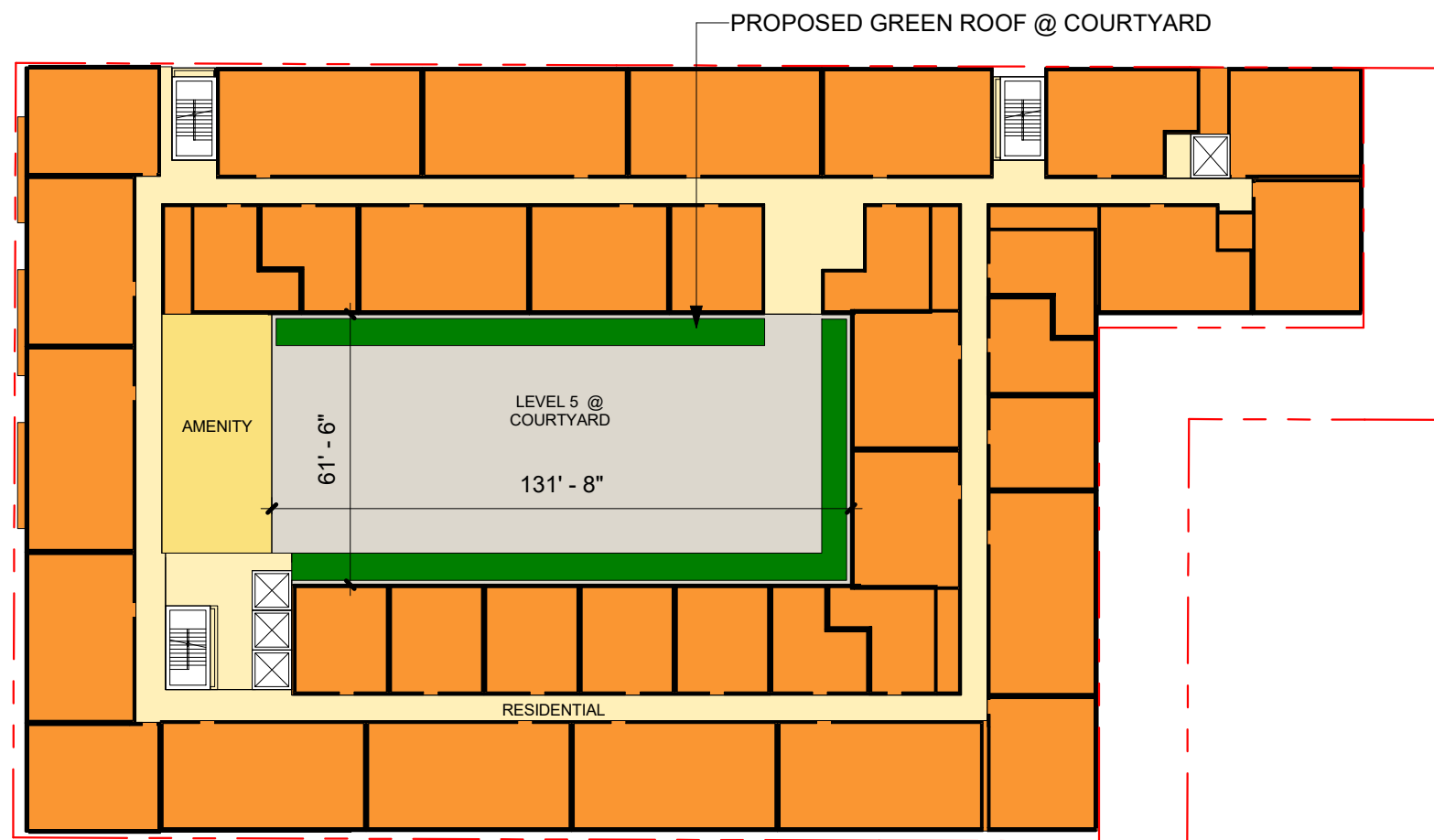
studio



1 ARCH SITE PLAN
1" = 40'-0"



1 LEVEL 3-4 - OVERALL PLAN
1" = 40'-0"



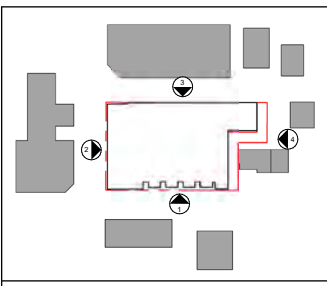
1 LEVEL 5 - OVERALL PLAN
1" = 40'-0"

design

dwell

Elevations

studio



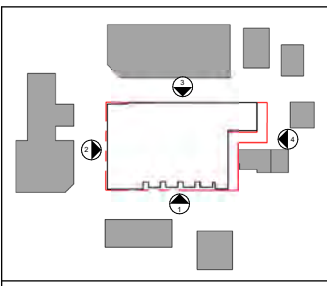
KEY PLAN

FINISH SCHEDULE

- BR1 MASONRY - COLOR 1
- CP1 FIBER CEMENT PANEL - COLOR 1
- CP2 FIBER CEMENT PANEL - COLOR 2
- CP3 FIBER CEMENT PANEL - COLOR 3
- CP4 FIBER CEMENT PANEL - COLOR 4
- CP5 FIBER CEMENT PANEL - COLOR 5
- ACP ACCENT FIBER CEMENT PANEL
- MP1 METAL PANEL - COLOR 1
- MP2 METAL PANEL - COLOR 2
- MT1 PRE-FAB METAL CANOPIES
- MT2 METAL - MESH RAILING
- MT3 METAL - MESH SCREENING SYSTEM
- MT4 METAL BUILDING SIGNAGE
- SR SOLID ROLL-UP DOOR
- SF ALUMINUM STOREFRONT SYSTEM



1 OVERALL SOUTH ELEVATION - MCKEE PL.
3/64" = 1'-0"



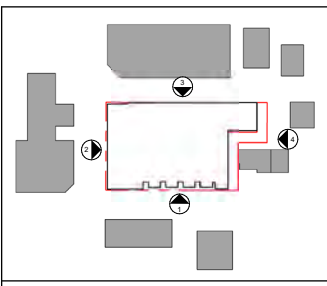
KEY PLAN

FINISH SCHEDULE

- BR1 MASONRY - COLOR 1
- CP1 FIBER CEMENT PANEL - COLOR 1
- CP2 FIBER CEMENT PANEL - COLOR 2
- CP3 FIBER CEMENT PANEL - COLOR 3
- CP4 FIBER CEMENT PANEL - COLOR 4
- CP5 FIBER CEMENT PANEL - COLOR 5
- ACP ACCENT FIBER CEMENT PANEL
- MP1 METAL PANEL - COLOR 1
- MP2 METAL PANEL - COLOR 2
- MT1 PRE-FAB METAL CANOPIES
- MT2 METAL - MESH RAILING
- MT3 METAL - MESH SCREENING SYSTEM
- MT4 METAL BUILDING SIGNAGE
- SR SOLID ROLL-UP DOOR
- SF ALUMINUM STOREFRONT SYSTEM



2 OVERALL WEST ELEVATION
3/64" = 1'-0"



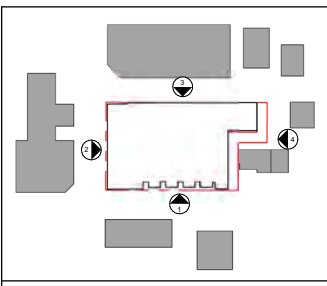
KEY PLAN

FINISH SCHEDULE

BR1	MASONRY - COLOR 1
CP1	FIBER CEMENT PANEL - COLOR 1
CP2	FIBER CEMENT PANEL - COLOR 2
CP3	FIBER CEMENT PANEL - COLOR 3
CP4	FIBER CEMENT PANEL - COLOR 4
CP5	FIBER CEMENT PANEL - COLOR 5
ACP	ACCENT FIBER CEMENT PANEL
MP1	METAL PANEL - COLOR 1
MP2	METAL PANEL - COLOR 2
MT1	PRE-FAB METAL CANOPIES
MT2	METAL - MESH RAILING
MT3	METAL - MESH SCREENING SYSTEM
MT4	METAL BUILDING SIGNAGE
SR	SOLID ROLL-UP DOOR
SF	ALUMINUM STOREFRONT SYSTEM



3 OVERALL NORTH ELEVATION - SEMPLE ST.
3/64" = 1'-0"



KEY PLAN

FINISH SCHEDULE

- BR1 MASONRY - COLOR 1
- CP1 FIBER CEMENT PANEL - COLOR 1
- CP2 FIBER CEMENT PANEL - COLOR 2
- CP3 FIBER CEMENT PANEL - COLOR 3
- CP4 FIBER CEMENT PANEL - COLOR 4
- CP5 FIBER CEMENT PANEL - COLOR 5
- ACP ACCENT FIBER CEMENT PANEL
- MP1 METAL PANEL - COLOR 1
- MP2 METAL PANEL - COLOR 2
- MT1 PRE-FAB METAL CANOPIES
- MT2 METAL - MESH RAILING
- MT3 METAL - MESH SCREENING SYSTEM
- MT4 METAL BUILDING SIGNAGE
- SR SOLID ROLL-UP DOOR
- SF ALUMINUM STOREFRONT SYSTEM



4 OVERALL EAST ELEVATION
3/64" = 1'-0"





View 2 - Intersection of Forbes Ave. & McKee Pl.

3500 Forbes Avenue - Pittsburgh, PA





View 4 - Intersection of Forbes Ave. & McKee Pl.

3500 Forbes Avenue - Pittsburgh, PA













View 10 - Intersection of Forbes Ave. & Semple St.

3500 Forbes Avenue - Pittsburgh, PA



View 10A - Masonry at Grade along Forbes Ave.

3500 Forbes Avenue - Pittsburgh, PA





View 12 - Garage Exit at Semple St.

3500 Forbes Avenue - Pittsburgh, PA







design

dwell

Pedestrian Connection

studio



Pedestrian Connection - View 1

3500 Forbes Avenue - Pittsburgh, PA







