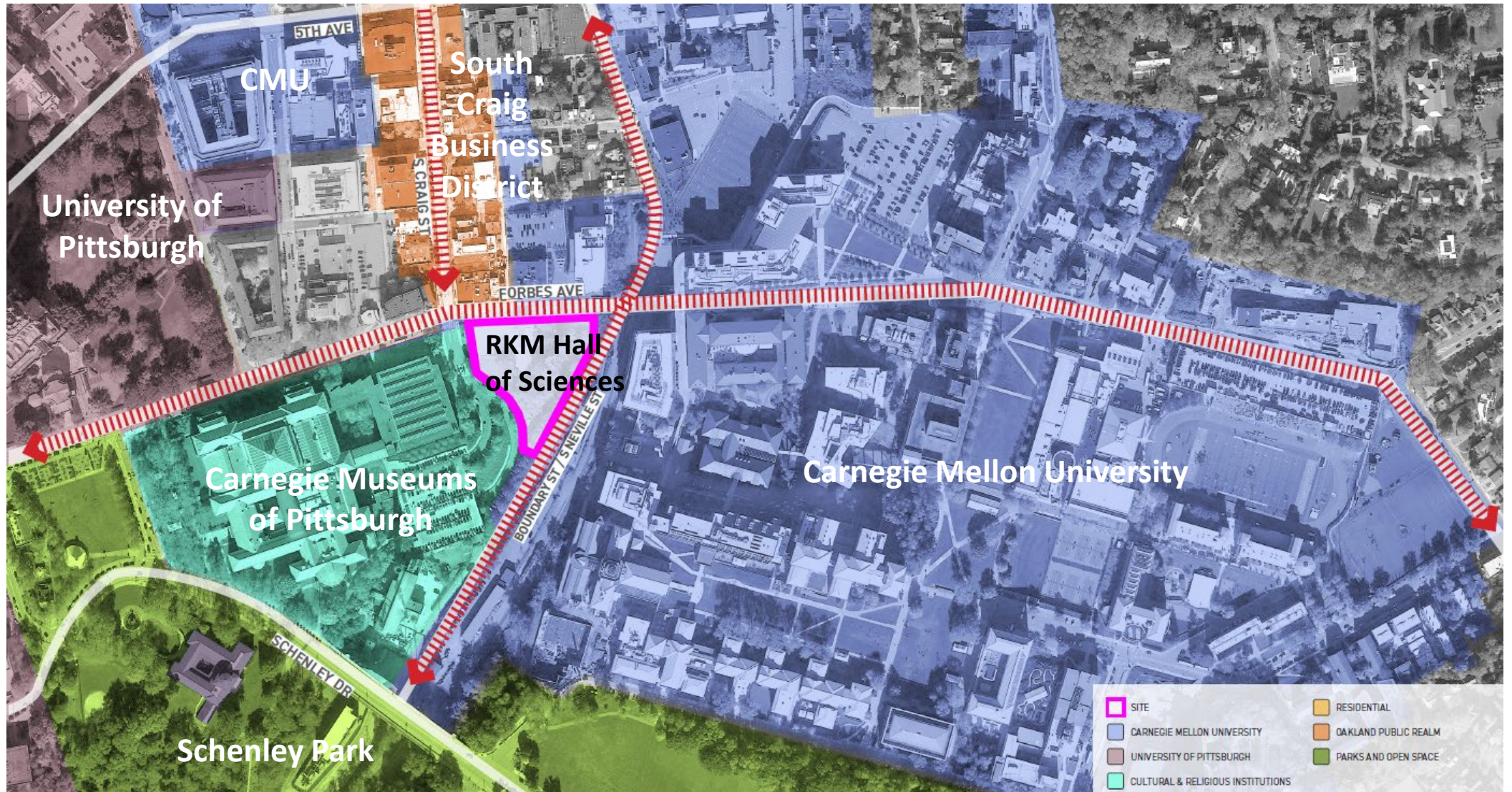


The logo of Carnegie Mellon University is positioned on the left side of the slide. It features the university's name in a white, serif font, stacked in three lines: "Carnegie", "Mellon", and "University". The text is set against a dark blue background that is decorated with a complex, multi-colored grid pattern of thin lines in red, green, and yellow.

Carnegie
Mellon
University

R. K. Mellon Hall of Sciences

JANUARY 2024





An Opportunity to Transform the Campus

- Expansion maximizes the development on this site
- Builds synergy for university academics and research
- Creates connections to Oakland and the City beyond
- Enhances connections to institutional partners, especially the Carnegie Museum of Art
- Anchors the revitalization of S. Craig Street District

The Future of Science in the Institutional Master Plan

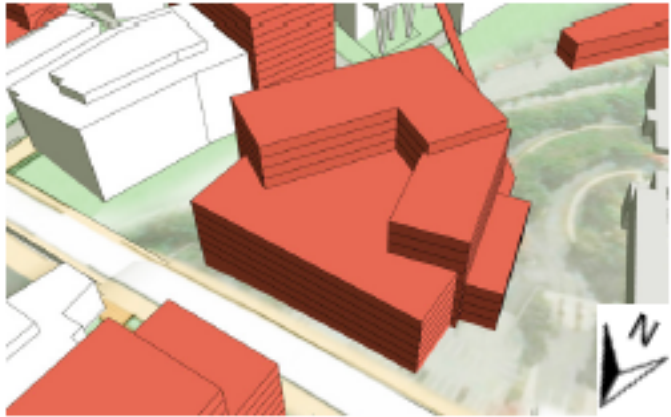


- Carnegie Mellon University Property in 2022 IMP
 - Carnegie Mellon University Existing Buildings
 - - Campus District Boundaries
 - Development Sites
- 1 Facilities Operations Center
 - 2 Academic Building
 - 3 Hamburg Expansion
 - 4 Mixed Use
 - 5 Purnell Center Expansion
 - 6 West Wing Addition
 - 7 Margaret Morrison Carnegie Hall Expansion
 - 8 Academic/Student Housing Complex
 - 9 Student Commons
 - 10 Academic Building
 - 11 Mixed Use Building
 - 12 Student Commons
 - 13 Mixed Use Building
 - 14 Student Housing
 - 15 Student Housing
 - 16 Shirley Apartments Renovation
 - 17 Student Apartments
 - 18 Mellon Institute Entrance
 - 19 Mixed Use Building
 - 20 South of Forbes Site

Craig Street Area Development Sites

20. New Academic Building

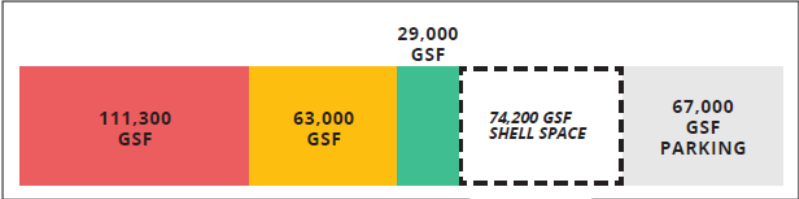
DESCRIPTION	New multiple story building mixed-use development with subsurface parking
USES	Education, Laboratory / Research, Office, Parking, Public Assembly, Restaurant, Retail, Art or Music Studio
SQUARE FEET	425,000 gsf
HEIGHT	9 stories / 150 ft
STEPBACKS	4 stories / 50 ft first 50 ft on Museum Dr 6 stories / 90 ft first 50 ft on Forbes
SETBACK	North: 5 ft from property line South: 5 ft from Museum Dr East: 15 ft from property line West: 5 ft from Museum Dr
MOBILITY	Up to 500 structured spaces Integrates with BRT station Upgrades Forbes Ave bridge connection No curb cuts from Museum Dr
PUBLIC REALM	Creates pedestrian plaza with Carnegie Museum Upgrades Forbes Ave streetscape May include new pedestrian bridge to campus Includes ground floor public uses



Richard King Mellon Hall of Sciences

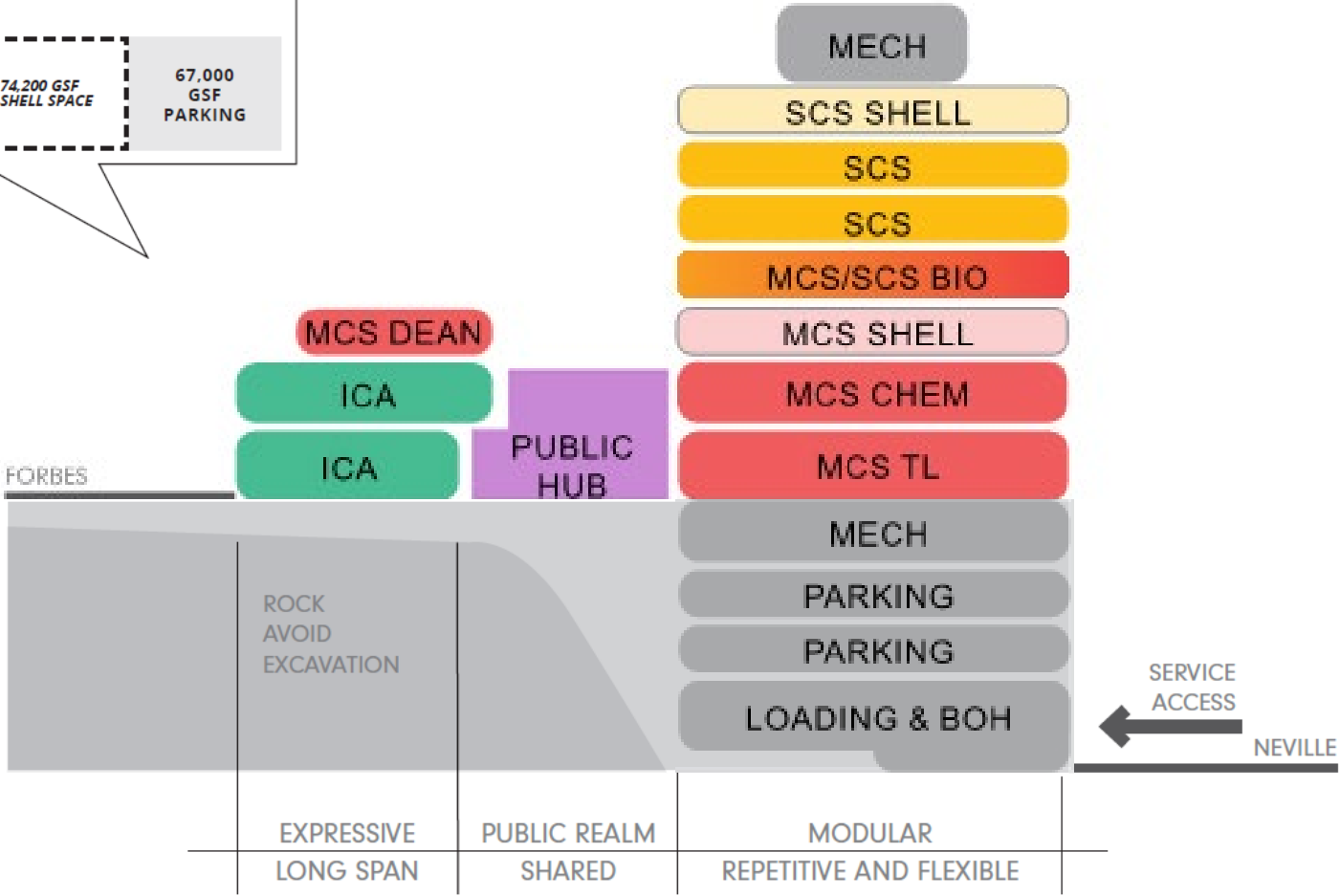


Richard King Mellon Hall of Sciences

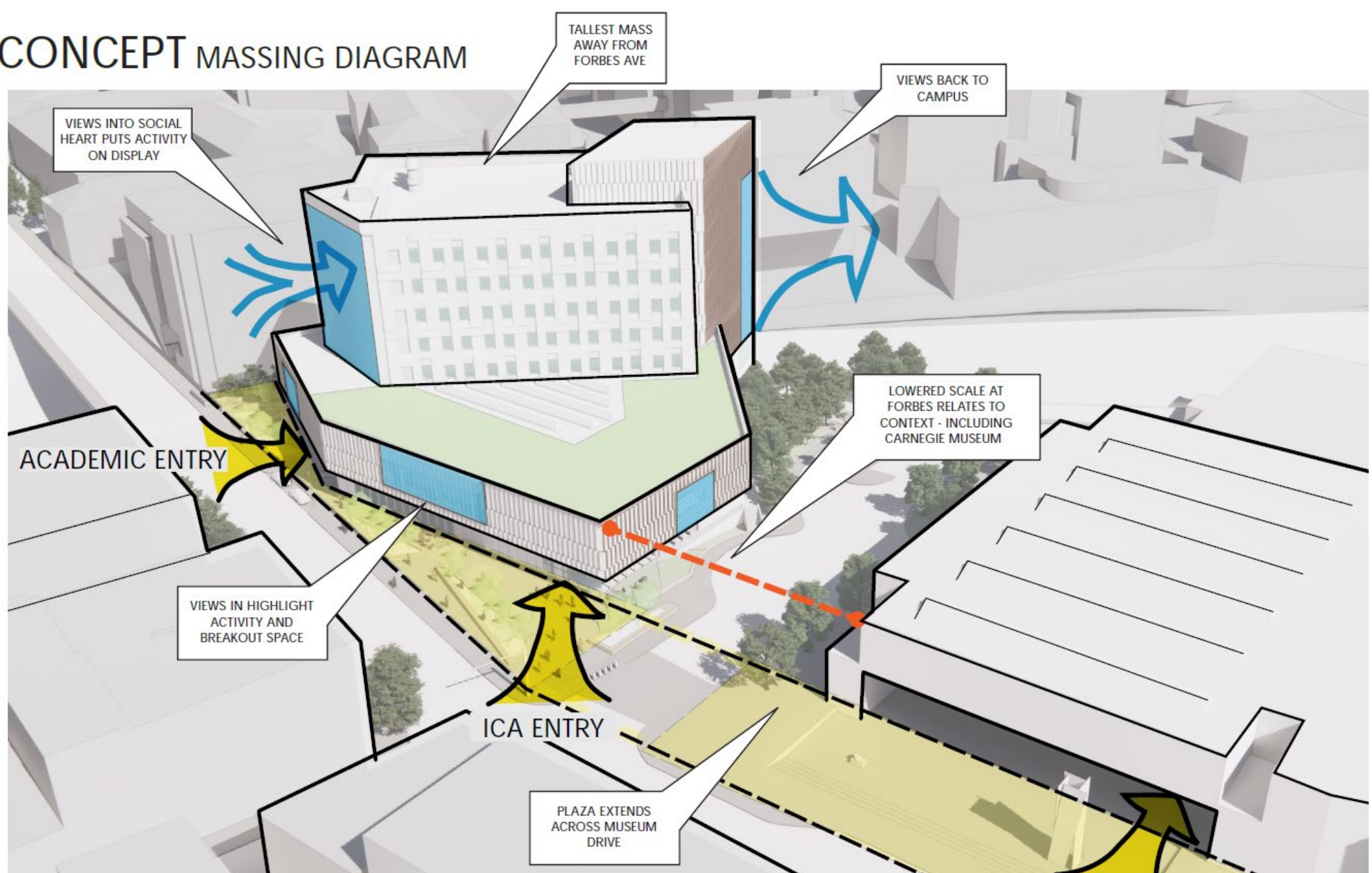


TOTAL = 344,500 GSF

- MELLON COLLEGE OF SCIENCE
- SCHOOL OF COMPUTER SCIENCE
- INSTITUTE OF CONTEMPORARY ART
- SHARED
- PARKING & SUPPORT



CONCEPT MASSING DIAGRAM











TARTAN MATERIAL PALETTE

BRICK BLEND WITH VARIOUS COURSING PATTERNS



MANUFACTURED 'NATURAL' FINISHED ALUM FIN



GROUND LEVEL MATERIAL PALETTE



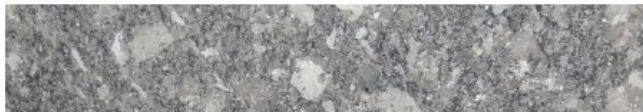
GLAZED TERRA COTTA



ALUMINUM TRIM



STONE BASE



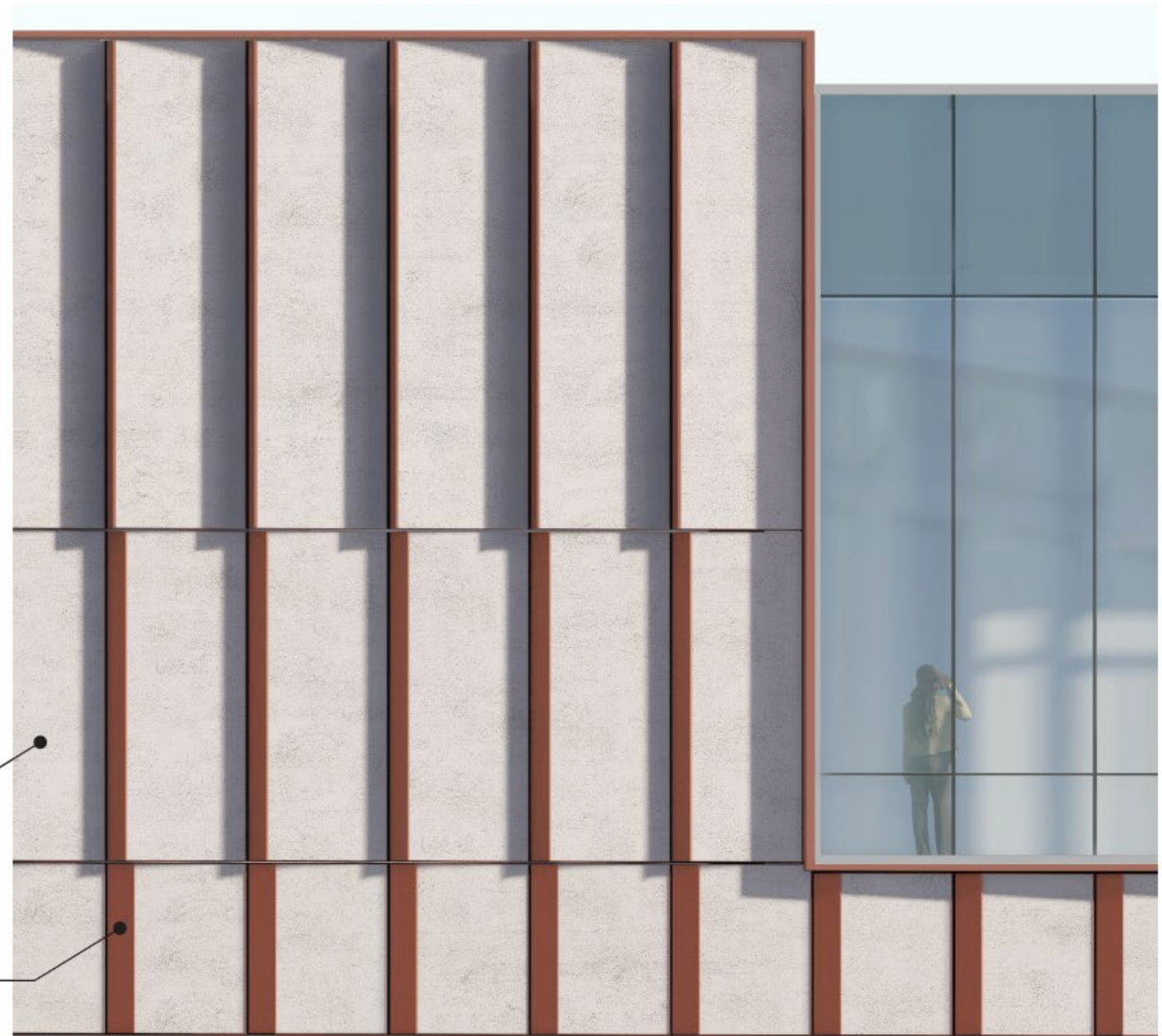
THISTLE MATERIAL PALETTE



ULTRA-HIGH PERFORMANCE CONCRETE
WITH EXPOSED AGGREGATE



MANUFACTURED 'NATURAL' FINISHED ALUM PLATE



NEVILLE LOADING MATERIAL PALETTE

MECHANICAL LOUVERS



EXPANDED METAL MESH



CAST IN PLACE CONCRETE



Forbes Frontage



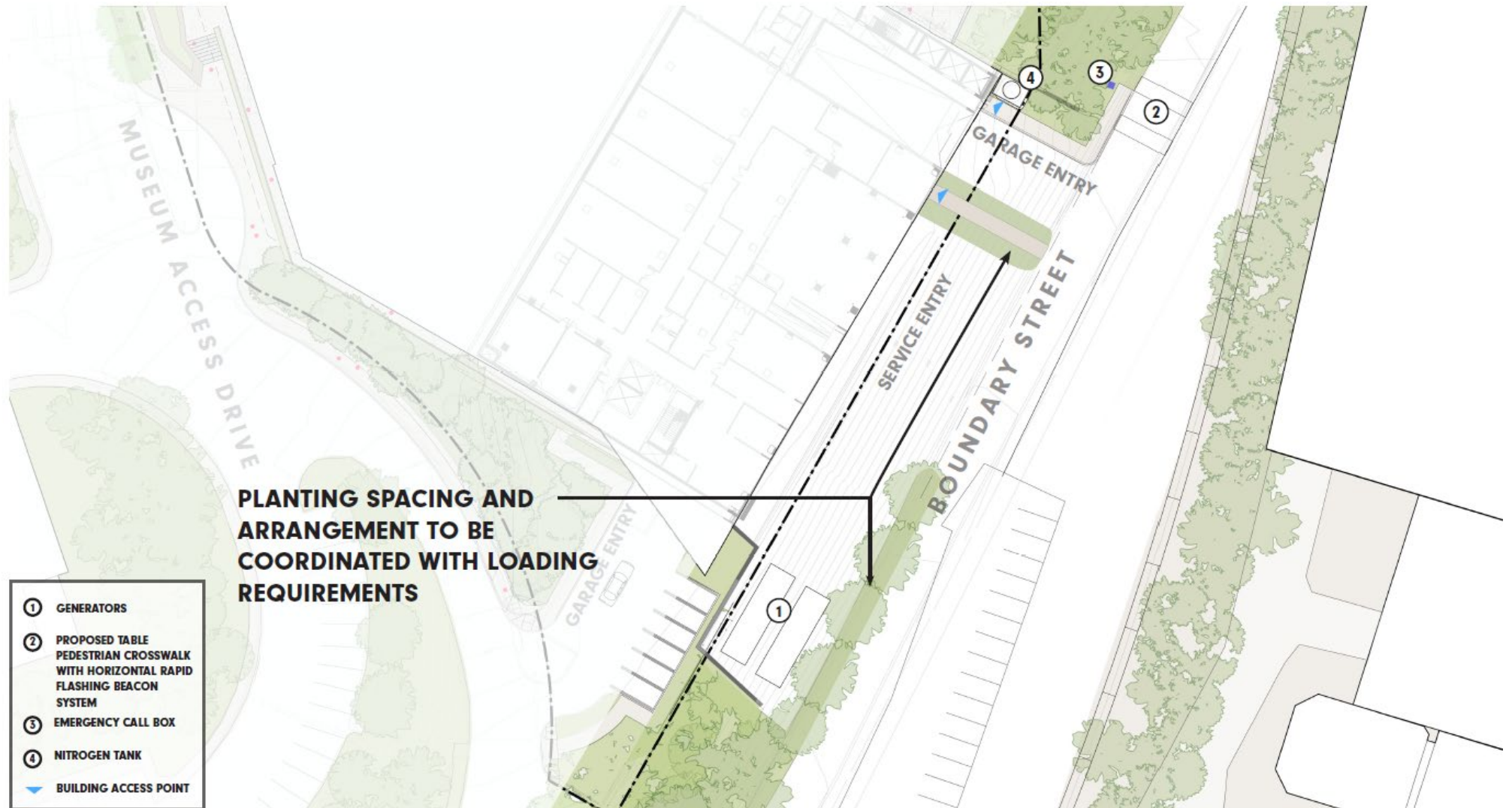
Forbes Frontage



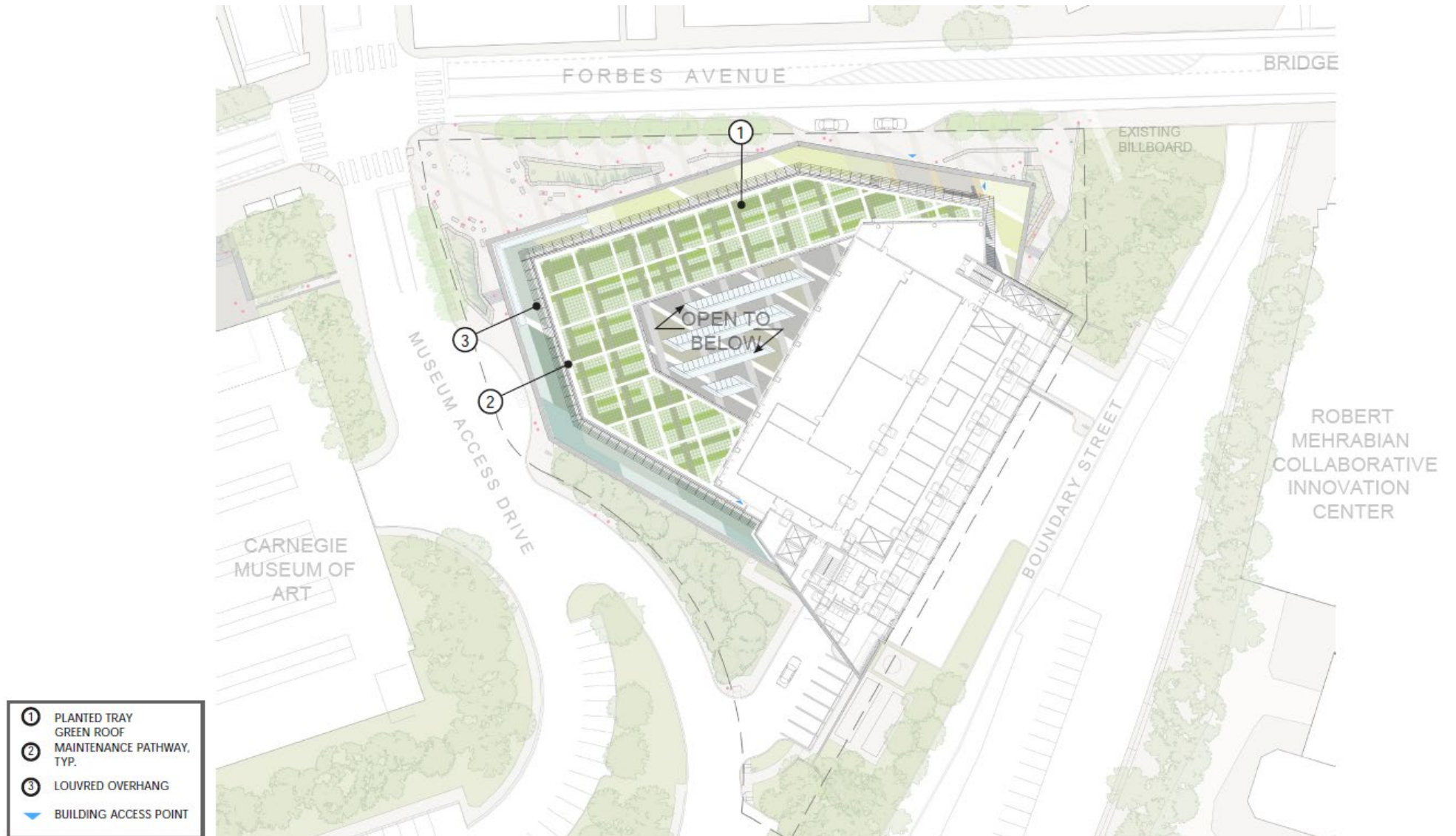
Museum Drive



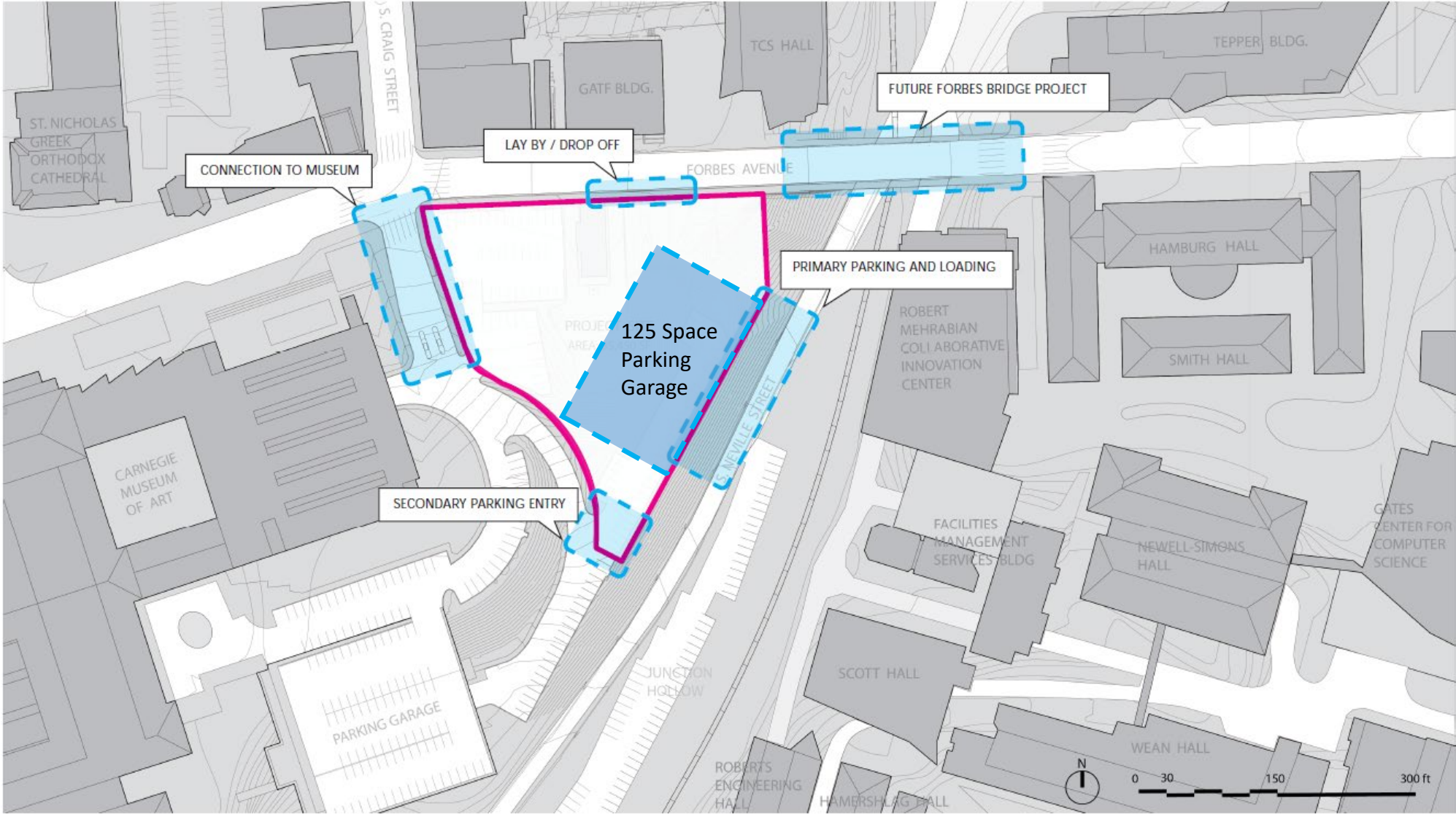
S Neville



Landscape: Green Roof



Site Mobility



ICA Entrance at Forbes & S Craig



First Floor Atrium



Lab Write-Up Spaces



180 Seat Tiered Classroom





Milestones

Design process and documentation: Summer 2022 – Spring 2024

Outreach and City approvals: Fall 2023 – Winter 2024

Demolition & Excavation: Winter – Summer 2024

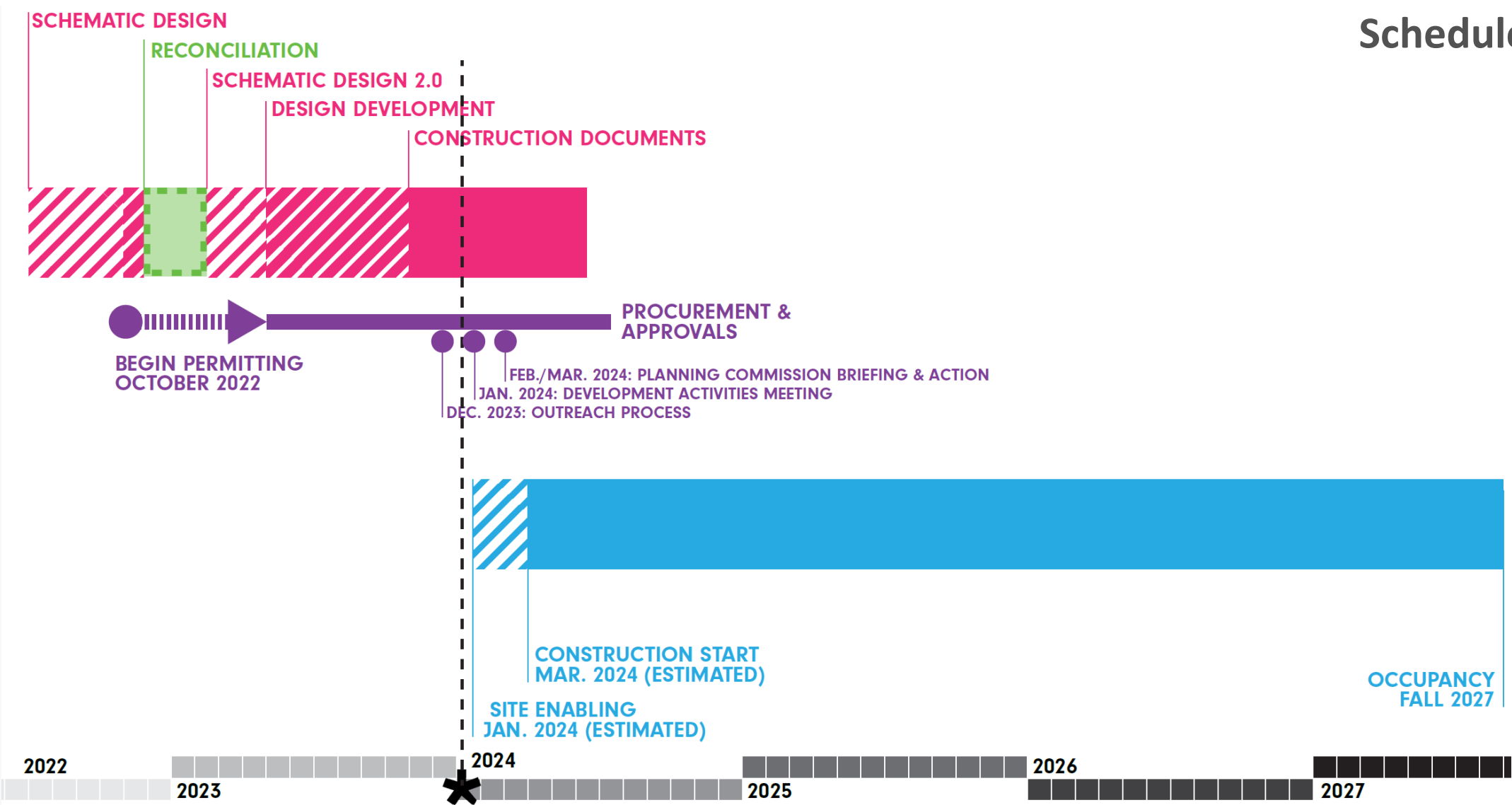
Foundations: Fall 2024 – Spring 2025

Above Grade Construction: Spring 2025 – Summer 2026

Interior Construction / Site Work: Summer 2026 – Summer 2027

Substantial Completion: Fall 2027

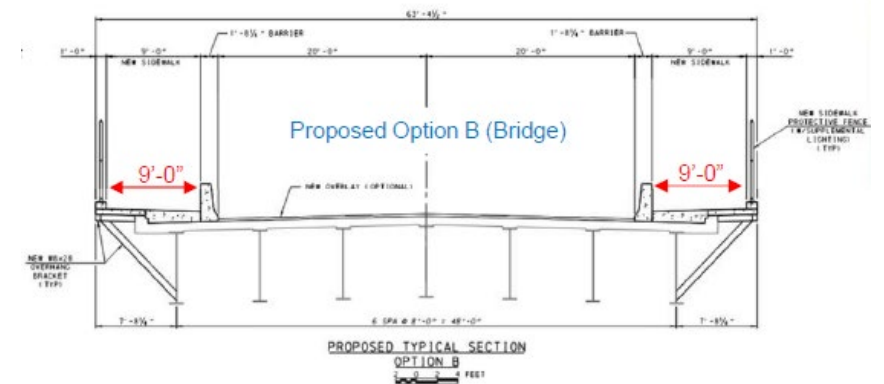
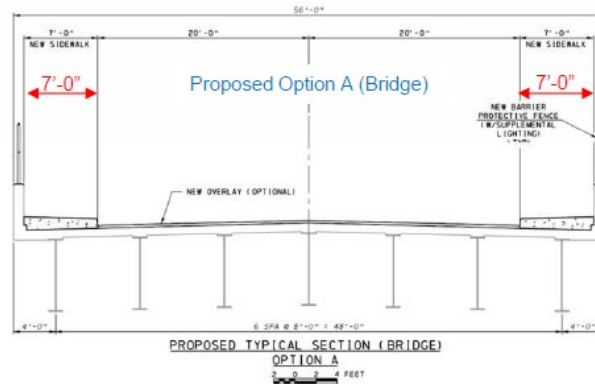
Schedule



Forbes Avenue Bridge Study



Forbes Avenue Bridge Study



Sidewalk Option A

7-foot Sidewalk without Roadside Barrier



Sidewalk Option B

9-foot Sidewalk with Roadside Barrier & Outriggers





LEVEL 01



LEVEL 02



LEVEL 03



LEVEL 04



LEVEL 05



LEVEL 06



LEVEL 07

