

Presentation for:



Project:

Carnegie Library of Pittsburgh
Main Branch, Oakland
Schenley Plaza Entrance
Addition & Renovations
4400 Forbes Avenue
(aka 4200 Forbes Avenue &
221 Schenley Drive)
Pittsburgh, PA 15213



Introduction

Property Under Consideration
Carnegie Library of Pittsburgh
Main Branch, Oakland
4400 Forbes Avenue
Pittsburgh, PA 15213

Owner
City of Pittsburgh
414 Grant Street, Room 200
Pittsburgh, PA 15219-2409

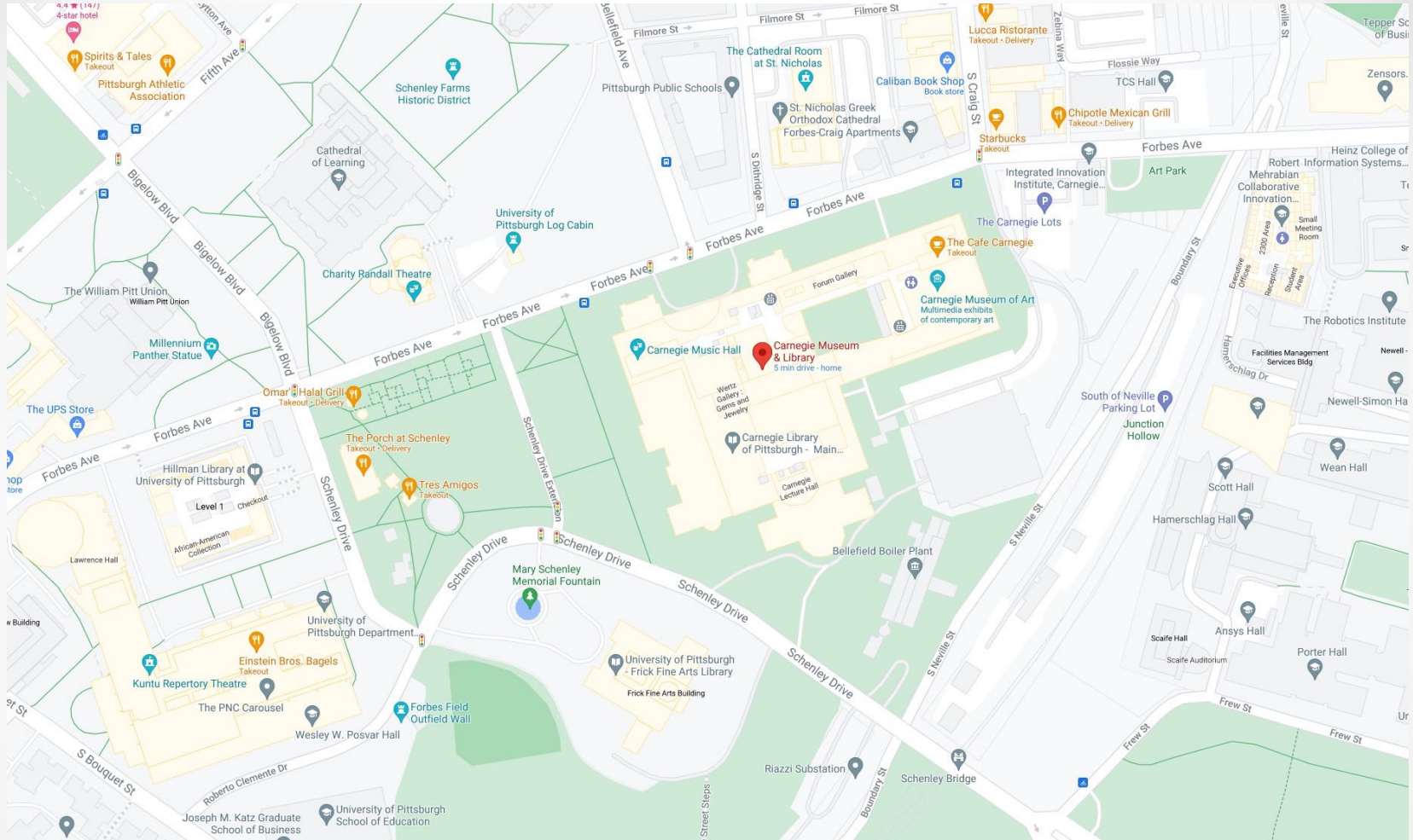
Architect
Elagin Architecture, Inc.
(Sergei C. Matveiev, AIA)
20 Brilliant Avenue, Suite 200F
Pittsburgh, PA 15215

Civil & Structural Engineer
Gateway Engineers, Inc.
100 McMorris Road
Pittsburgh, PA 15205

MEP & FP Engineer
WNA Engineering, Inc.
1257 Perry Hwy., Suite 100
Portersville, PA 16051

Landscape Architect
Eichenlaub
Box 111282
Pittsburgh, PA 15238

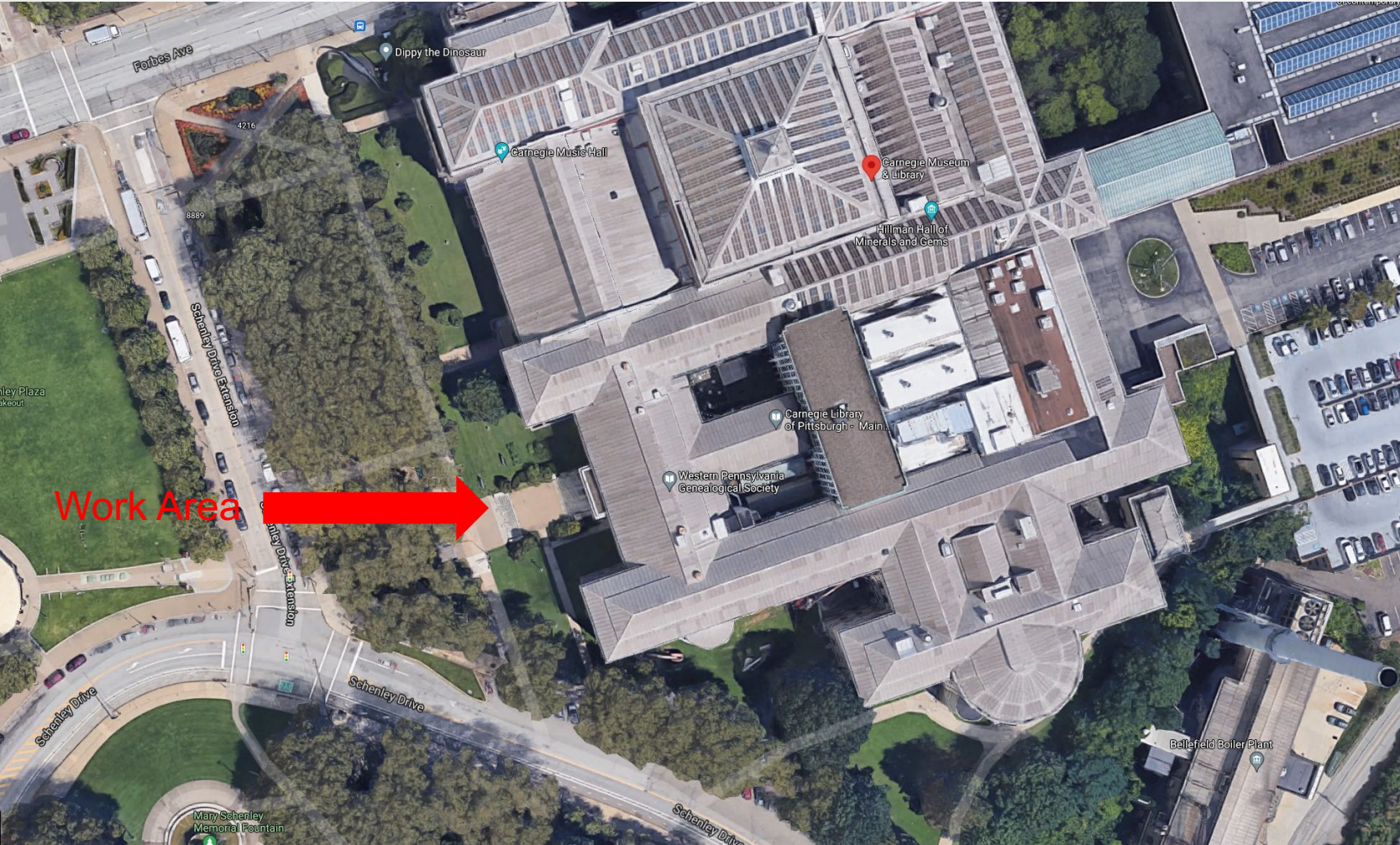
Vicinity Map



4400 Forbes Avenue
Parcel I.D. 0027-S-00150-0000-03
Zoning District: EMI



Improvements Location



4400 Forbes Avenue
Parcel I.D. 0027-S-00150-0000-03
Zoning District: EMI



Scope of Work

- In-kind reconstruction of the exterior Grand Steps facing Schenley Plaza.
- New exterior paving to improve accessibility and reduce travel distances from Forbes Avenue's bus stop.
- A small vestibule addition accessing a limited use/limited application (LULA) elevator for improving the existing accessible route.
- Construction of a shaft for the LULA and the installation of the LULA itself with a machine room.
- New landscaping at main entry's planters.

Schenley Plaza Entrance – Grand Stair In-kind Reconstruction



Grand Stair In-kind Reconstruction



New Paved Route from Forbes Avenue



New Paved Route to Proposed LULA Location



LULA Elevator Vestibule Addition Location



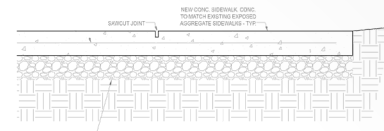
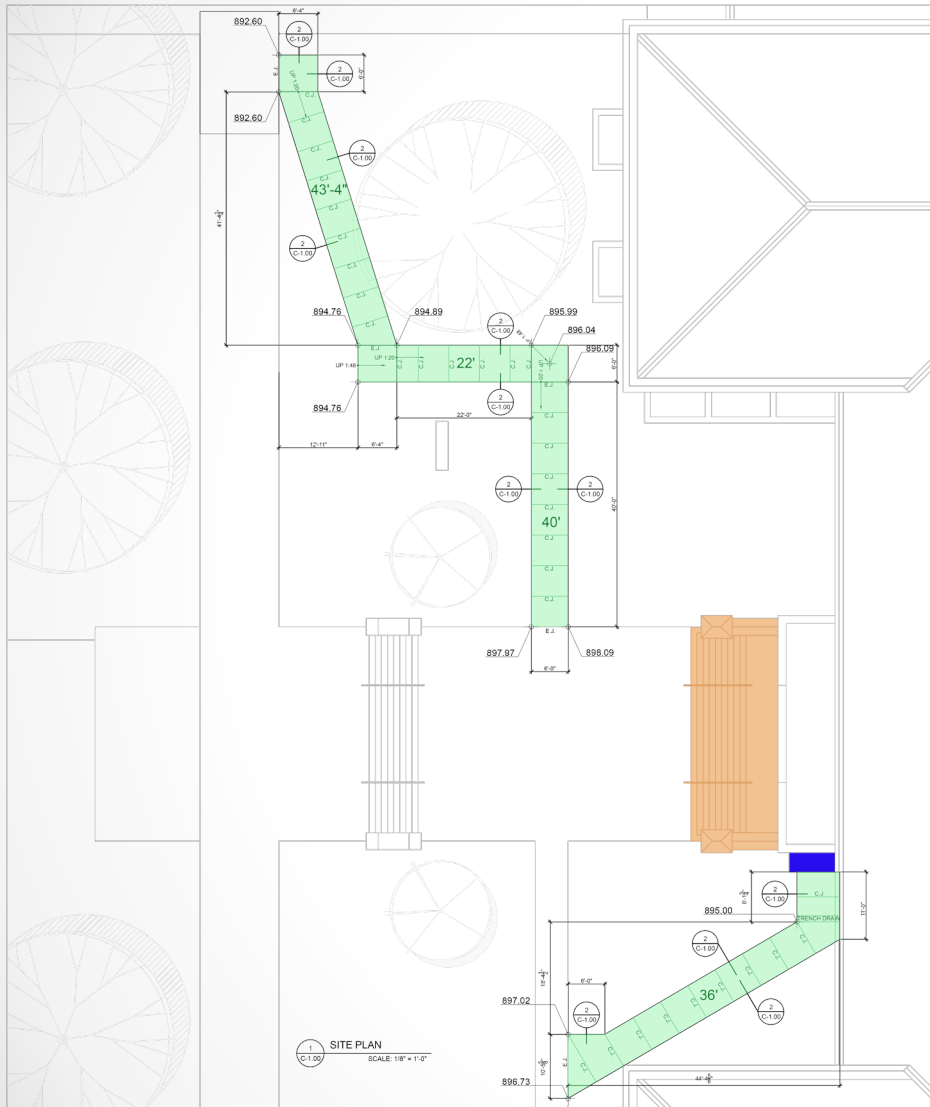
Improved Accessible Route



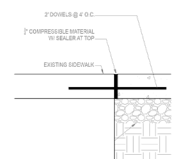
Entry Hall Renovations



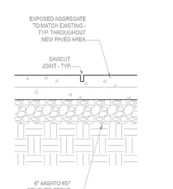
Proposed Paving Plan



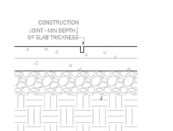
2 NEW SIDEWALK EDGE CONDITION - TYP.
SCALE: 1" = 1'-0"



3 EXPANSION JOINT (E.J.)
SCALE: 1" = 1'-0"



4 TYP. SAWCUT JOINT (S.C.)
SCALE: 1" = 1'-0"



5 TYPICAL CONSTRUCTION JOINT (C.J.)
SCALE: 1" = 1'-0"



20 BRILLIANT AVENUE
SUITE 200F
PITTSBURGH, PA 15215
PH: 412.303.4331
URL: WWW.ELAGIN.CO

CARNEGIE LIBRARY
OF PITTSBURGH - MAIN
4400 FORBES AVENUE
PITTSBURGH, PA 15213

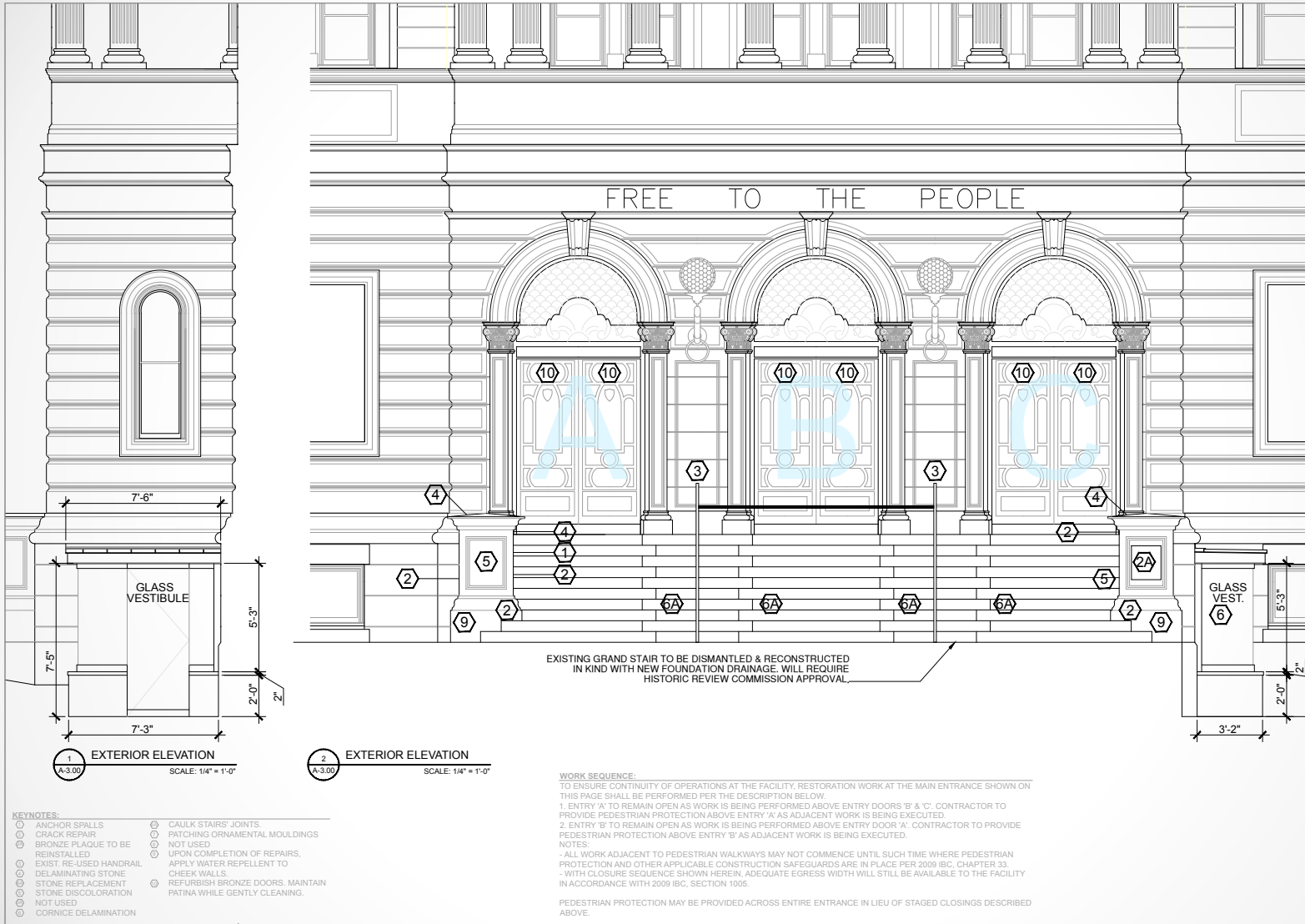
REVISION	DATE
ISSUED	01.15.2022

SITE PLAN & DETAILS

C-1.00

eal no: 02-21-008

Proposed Vestibule Addition



CARNEGIE LIBRARY
 OF PITTSBURGH - MAIN
 4400 FORBES AVENUE
 PITTSBURGH, PA 15213

15-0000000000 0001
 10000.00 03.19.2022

EXTERIOR ELEVATIONS

A-3.00

eal no: 02-21-008

Petition Request

The Proposed Improvements will require the Approval of:

- Historic Review Commission, City Planning
 - Development Activities Meeting ←
- Art Commission, City Planning
- City Planning Commission, City Planning
- Department of Public Works

Thank you.

