



1. VIEW NORTH



2. VIEW SOUTH



In this option, the familiar forms of the urban context are applied to the surface of an otherwise solid concrete building to create a structure that bridges the gap between the residential neighborhood of Panther Hollow and the Institutions of Oakland.

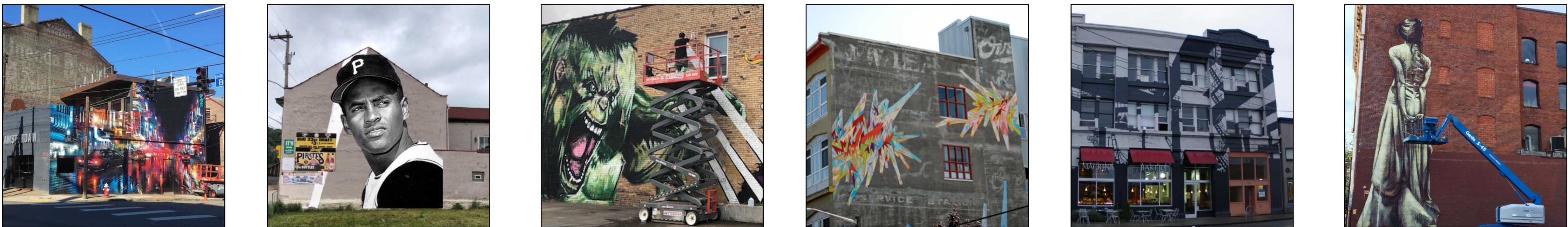
OPTION 1 - DESIGNING WITH CONTEXT



1. VIEW NORTH

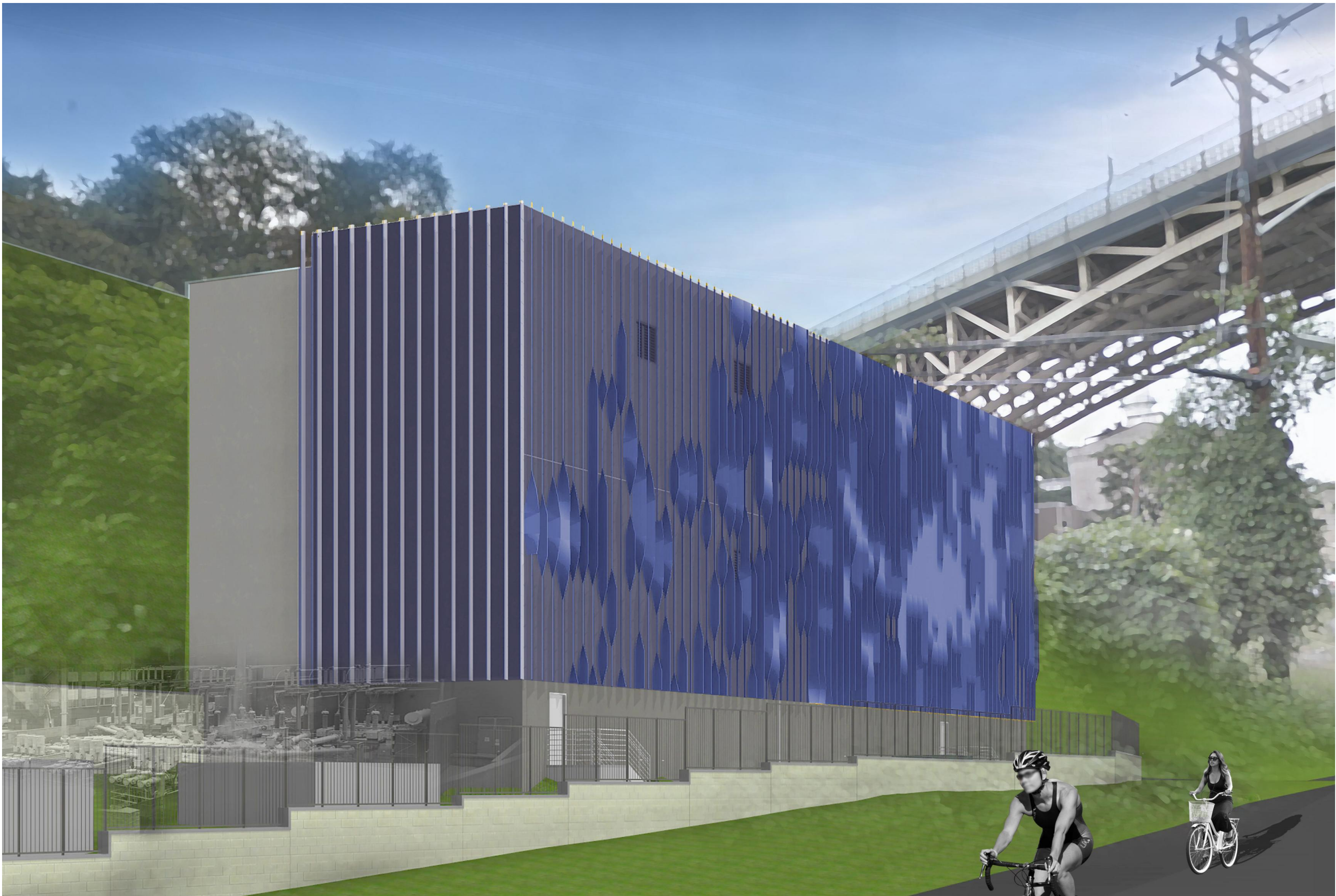


2. VIEW SOUTH



In this option, the familiar forms of the urban context are applied to the surface of an otherwise solid concrete building to create a structure that bridges the gap between the residential neighborhood of Panther Hollow and the Institutions of Oakland.

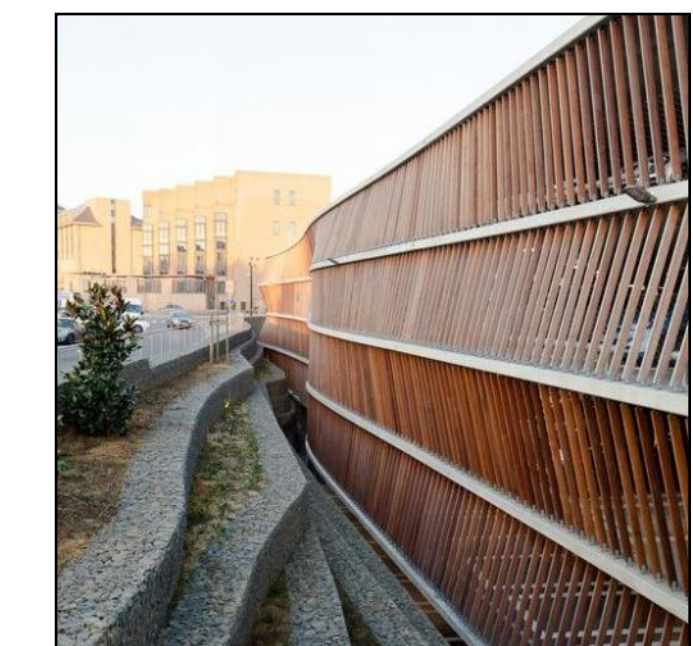
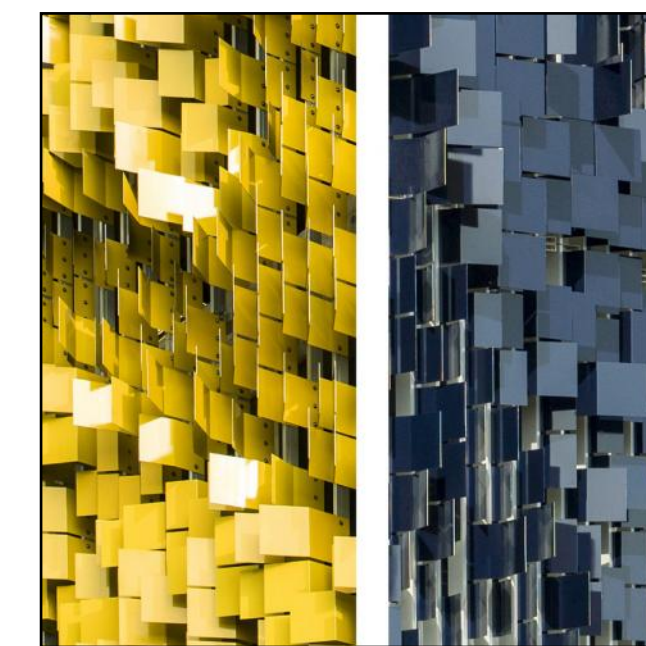
OPTION 2 - DESIGNING WITH ART



1. VIEW NORTH

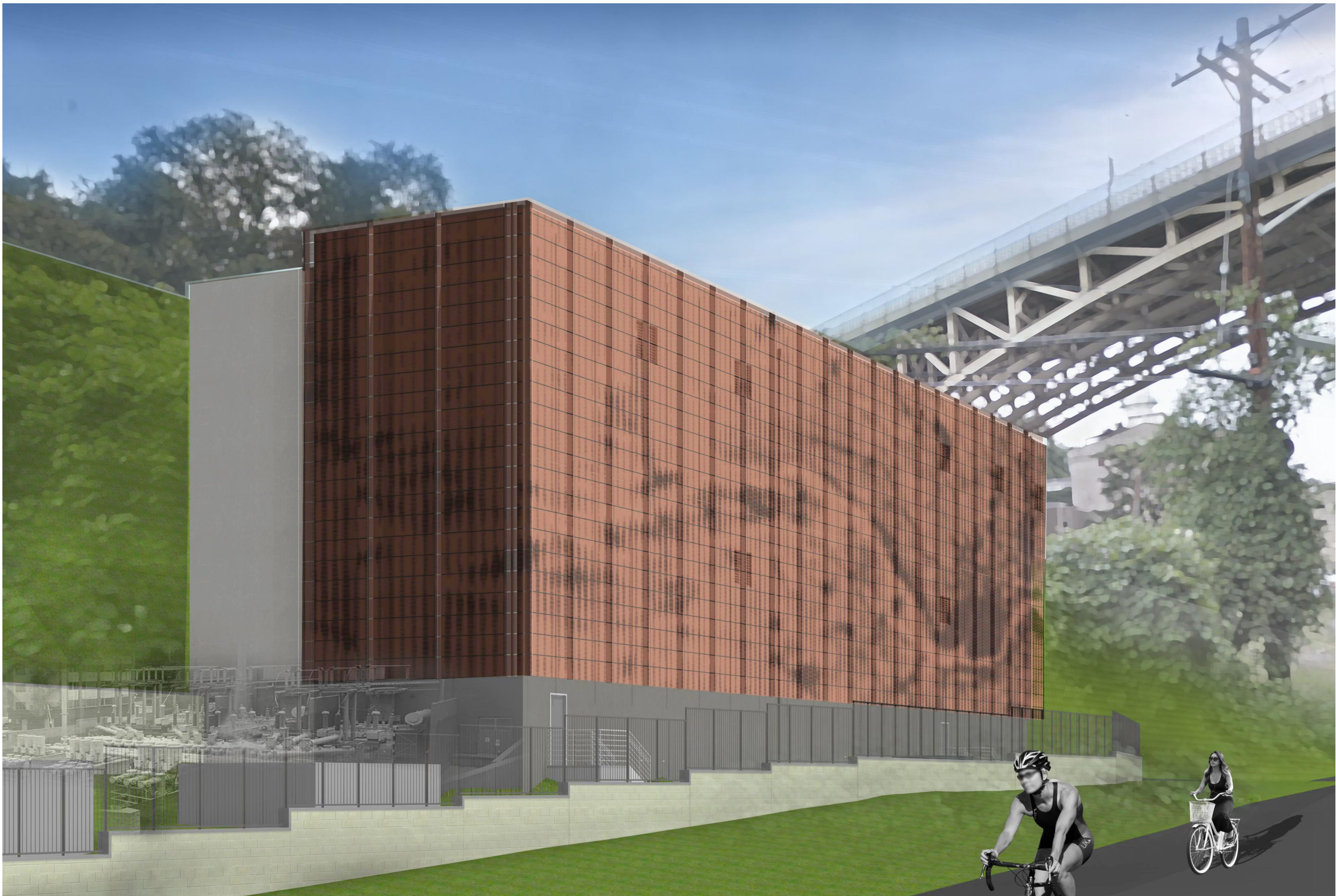


2. VIEW SOUTH



In this option, a skin constructed of metal fins is applied to the structure in a design that creates the perception of movement for pedestrians, bikers, and drivers as they pass through panther hollow. The elements of the skin twist and turn, revealing variations in color, shade, and shadow as users move past the structure.

OPTION 3 - DESIGNING WITH MOTION



1. VIEW NORTH



2. VIEW SOUTH



In this option, the building is wrapped in a metal screen that is gently backlit to provide a soft glowing façade at night, and a negative of the design during the day. The perforations in the metal skin are based on the light map of the City of Pittsburgh.

OPTION 4 - DESIGNING WITH LIGHT