

# OAKLAND-WIDE COMMUNITY MEETING

## JANUARY 26, 2021

Jobs & Financial  
Coaching



Youth



Community  
Land Trust



Neighborhood  
Quality



Affordable  
Housing



OPDC

Oakland Planning  
and Development  
Corporation

# AGENDA

- OPDC and community updates and announcements
- **Latin American Studies Association** has acquired the building at 4338 Bigelow Boulevard to serve as its future headquarters and a Latin American Cultural Center.
- The **Breathe Project** will present an overview of their work with air quality in Pittsburgh and answer questions.

# OAKLAND CLT, BRIDGES TO CAREER OPPORTUNITIES

- **OPDC's Community Land Trust Aging in Place** program now accepts applications from residents 55 and older. Eligible homeowners can receive up to \$22,500 for home repairs. [www.opdc.org/clt](http://www.opdc.org/clt)
- We're hiring a CLT Manager. Job responsibilities include program development, community engagement, and stewardship. Visit <http://www.opdc.org/blog/2021/01/14/cltmanager> for more information.
- **Bridges to Career Opportunities** is OPDC's free, eight-week job readiness training program. The first working group starts soon! [www.opdc.org/bridgestocareers](http://www.opdc.org/bridgestocareers)

# CARLOW UNIVERISTY, SNOW ANGELS

- **Carlow University** will present their Institutional Master Plan as a required development activity meeting at the next Oakland-Wide on February 23. They will take their plan to the City of Pittsburgh Planning Commission in April. Visit [www.pittsburghpa.gov/dcp/virtual-pc](http://www.pittsburghpa.gov/dcp/virtual-pc) for more information on planning commission meetings and upcoming agendas.
- Oakland has several volunteer **Snow Angels** ready to help shovel snow this winter. If you or a neighbor needs help, please register at [www.pittsburghpa.gov/snowangels](http://www.pittsburghpa.gov/snowangels)

# OAKLAND FOOD DISTRIBUTION

- **Food Distribution** continues throughout Oakland throughout the week. Organizations/locations include:
  - Community Human Services (CHS) Food Pantry – Thursdays: 3 – 6 PM and Fridays: 11 AM – 2 PM
  - Frazier Field House – Tuesdays and Thursdays: 3 – 5 PM
  - Islamic Center of Pittsburgh – Third Saturday of each month: 10:30 AM – 2 PM
  - St. George Cathedral – Third Saturday of each month: 10 AM – 12:30 PM
  - University of Pittsburgh Pitt Pantry – Wednesdays: 3 – 7 PM and Fridays: 1 – 5PM

Visit [www.opdc.org/neighborhoodquality](http://www.opdc.org/neighborhoodquality) for more information.



LATIN  
AMERICAN  
STUDIES  
ASSOCIATION

# LATIN AMERICAN CULTURAL CENTER

Milagros Pereyra-Rojas, PhD, Executive Director  
Sandra Budd, MFA, Assistant Director and Curator

Consulting Advisors  
Billie (Bill) R. DeWalt, PhD  
Sylvia M. Keller, MPM

---



LATIN  
AMERICAN  
STUDIES  
ASSOCIATION

# LATIN AMERICAN STUDIES ASSOCIATION

## ABOUT LASA

---



LASA is an international organization of students and scholars.



International headquarters has been housed at the University of Pittsburgh since 1986.



Membership now numbers nearly 14,000 students and scholars from across the globe.



Exponential membership growth in recent years created need for additional space for staff and operations.

## PURCHASE OF THE PROPERTY

4338 BIGELOW BOULEVARD



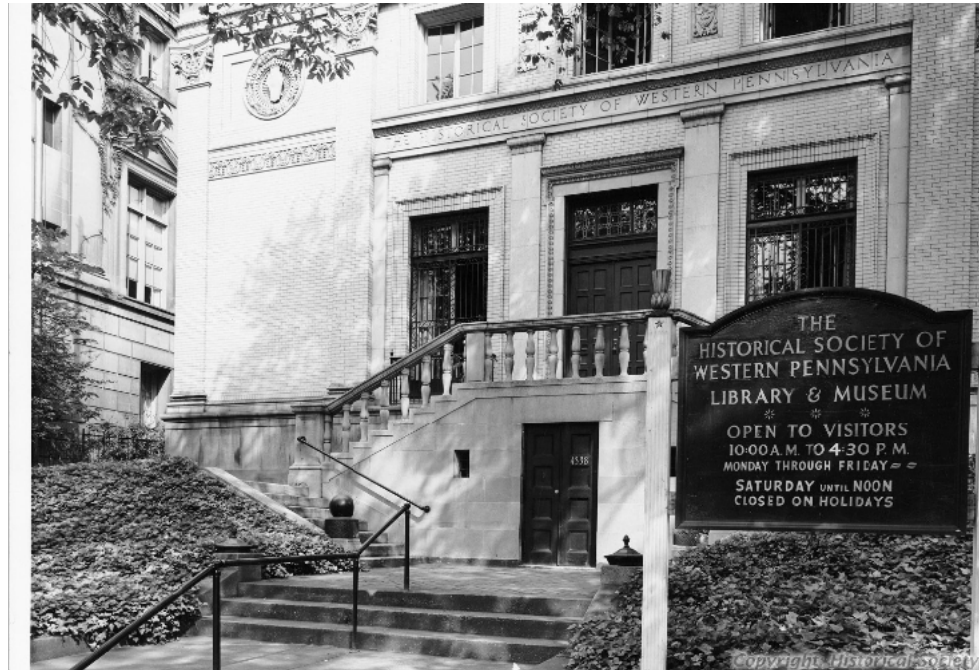
Purchased in late 2019 after a national search for the new headquarters building.



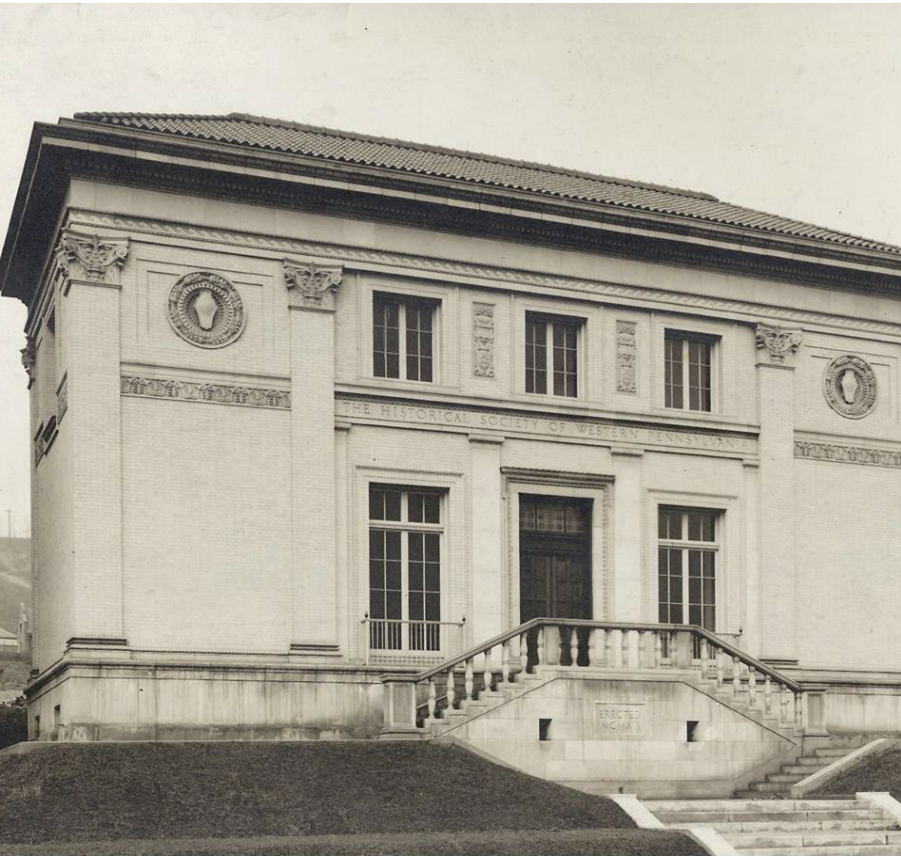
Located beside former 20<sup>th</sup> Century Club diagonally across from Soldiers and Sailors Memorial Hall and Museum.



Former home to the Historical Society of Western PA.







## THE BUILDING

4338 BIGELOW BOULEVARD



Built in 1912



Designed by architectural firm Ingham and Boyd (now IKM).



In 1990s became a small conference center.



The 1990s renovation obtained "Historic Preservation Award" by City of Pittsburgh Historic Review Commission.

## LASA PLANS FOR BUILDING

4338 BIGELOW BOULEVARD

---



Establish new international center for LASA Operations.



Implement outreach element of LASA Mission through creation of a Latin American Cultural Center/Museum (LACC).



Offer beautiful building spaces for rental to the public and private sector.

## LATIN AMERICAN CULTURAL CENTER

---

The LACC Mission: "Celebrate Latin American cultures through compelling physical and cyber spaces dedicated to sharing and fostering a heightened understanding and appreciation for Latin American arts, history, and culture."



### TEMPORARY EXHIBITS

LACC will host temporary exhibits on topics related to Latin America.



### PERMANENT EXHIBITS

LACC is creating a small museum with permanent exhibits about Latin American Geography, History, Arts and Culture.



### USE OF AUDITORIUM

LACC will program its beautiful auditorium for performances, lectures, film screenings, school group programs, distance learning.

## EXHIBITS ARE NOW BEING BUILT



### ENTRANCE

Permanent Exhibits on Latin America for Families and School Children



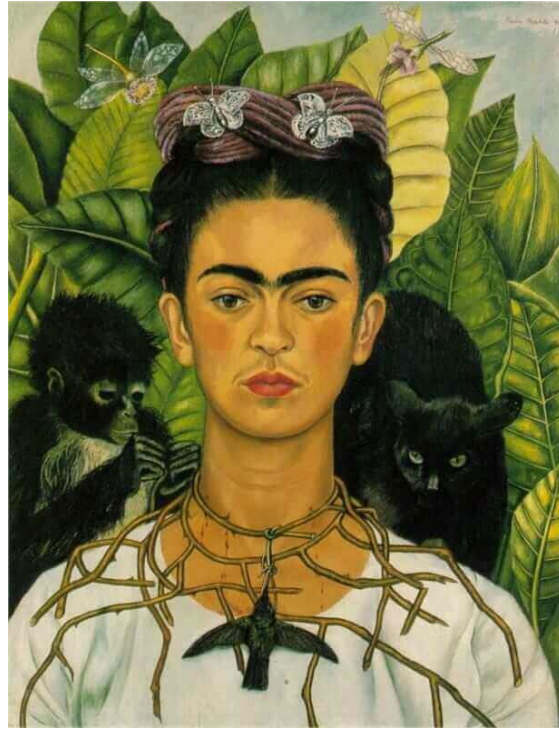
### EXHIBIT

Concept for Archaeology Exhibit



## EXHIBIT SPACE

The Arts of Latin America will be Highlighted.



## REPRODUCTIONS AND ORIGINAL ART OBJECTS

Frida Kahlo , Self Portrait with Necklace of Thorns.

**EXHIBITS ARE  
NOW BEING BUILT**

---

## **LARGE GALLERY**

FOR SPECIAL EXHIBITS



## **SECOND FLOOR**

Large Gallery Will Hold Special Exhibits

## AUDITORIUM

FOR LECTURES,  
FILMS & PRESENTATIONS



## FIRST FLOOR

The auditorium has a stage, audio system, and projector

## **ELEGANT SPACES**

FOR COMMUNITY AND RENTAL EVENTS



### **FIRST FLOOR**

Upon entering the building, an elegant lobby welcomes visitors



## LATIN AMERICAN CULTURAL CENTER GOALS

---



Increase understanding of Latin American Societies.

- The origin of more than 16% of the US population
- The most rapidly growing minority group



Serve as a vibrant cultural amenity and venue for the city and region.



Have a strong online presence.



## **LATIN AMERICAN CULTURAL CENTER**

WILL TENTATIVELY OPEN IN FALL OF 2021

---

### **BUILDING FACADE**

Photograph taken from the sidewalk in front of LACC.

The background of the slide is a photograph of a clear blue sky with several wispy white clouds scattered across it. The clouds are more prominent at the top and bottom edges of the frame.

**Pittsburgh Air Quality**

**Oakland-Wide Meeting**

**January 26, 2021**

# BREATHE PROJECT

The Air We Share



your voice matters

**We still have a serious air  
quality problem**

**Adding to our airshed burden will  
only make things worse.**

# Breathe Cam Videos

[Clairton Coke Works, December 24, 2018](#)

[Edgar Thomson Works, June 18, 2020](#)

[Edgar Thomson Works, June 23, 2020](#)

[Edgar Thomson Works, July 4, 2020](#)



# Pennsylvania: Allegheny

Allegheny County

Pittsburgh-New Castle-Weirton, PA-OH-WV

**If you live in Allegheny County, the air you breathe may put your health at risk.**

Ozone



Particle Pollution 24-hour



Particle Pollution Annual

**FAIL**

Source: ALA SOTA2019

# Air quality in the Pittsburgh Region was considered

**NOT GOOD**

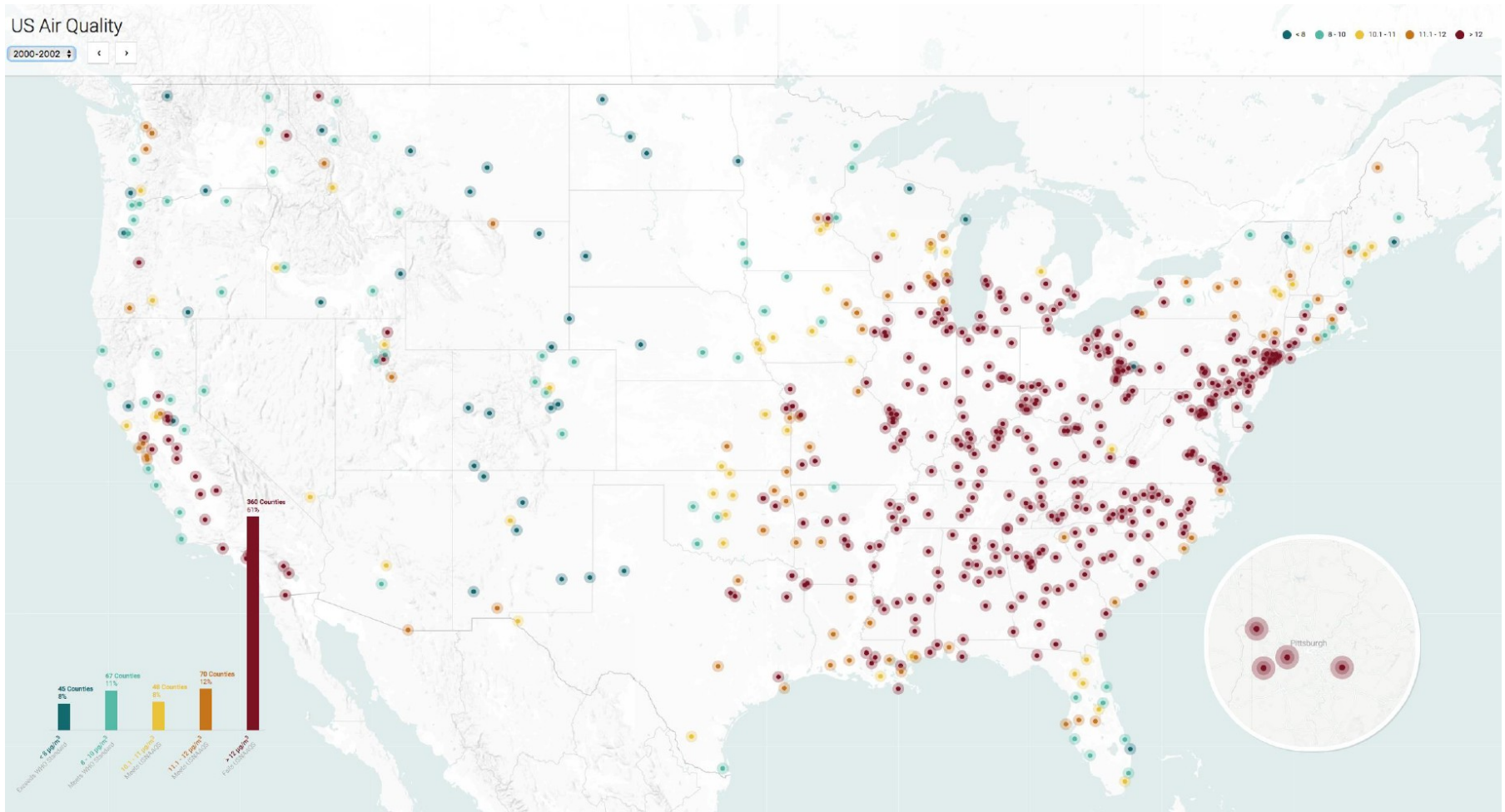
**230 days (2019)**

**229 days (2018)**

**(about 2/3 of the time)**

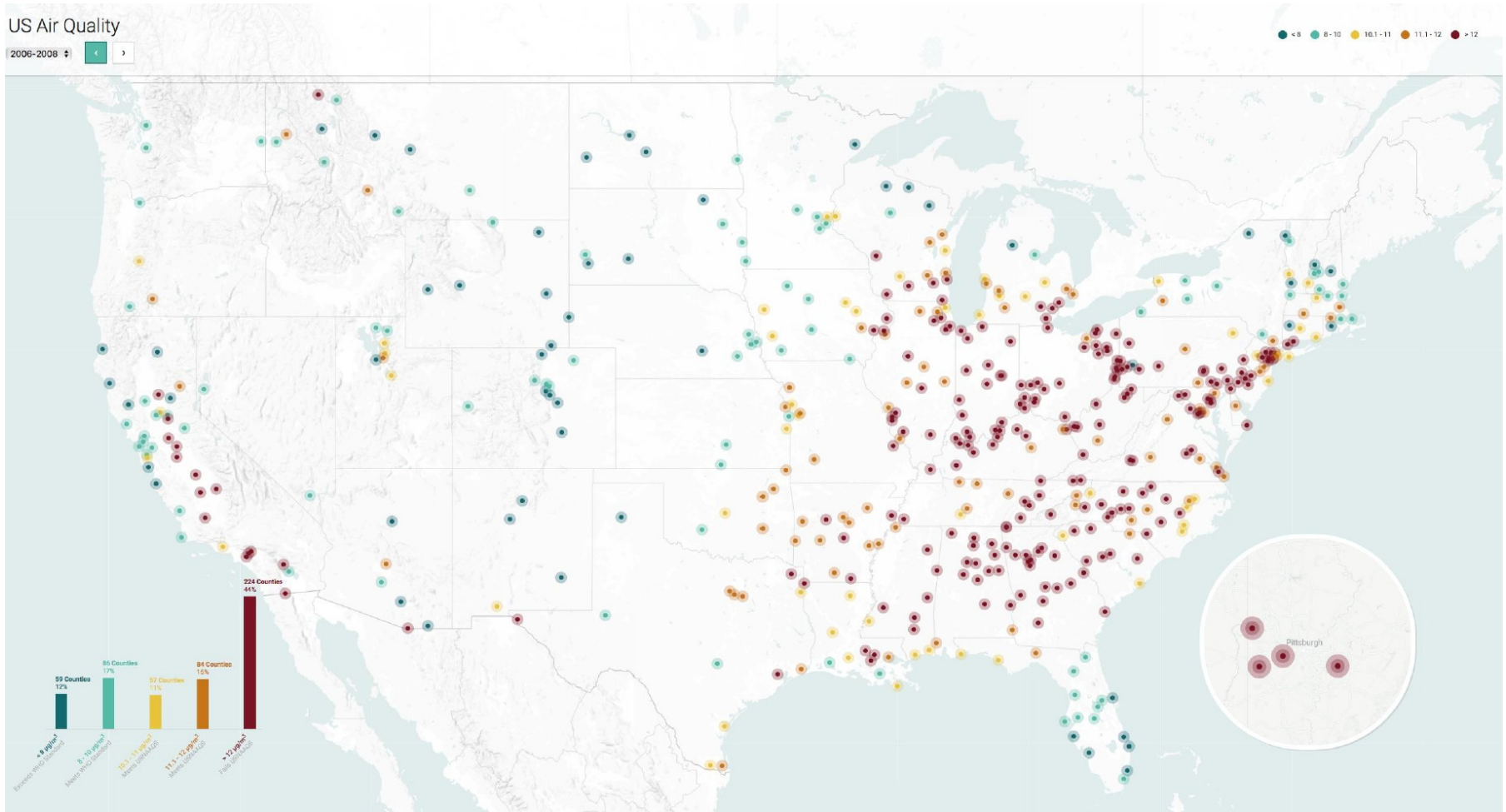


# County PM<sub>2.5</sub> Annual Design Value (DV) 2000-2002



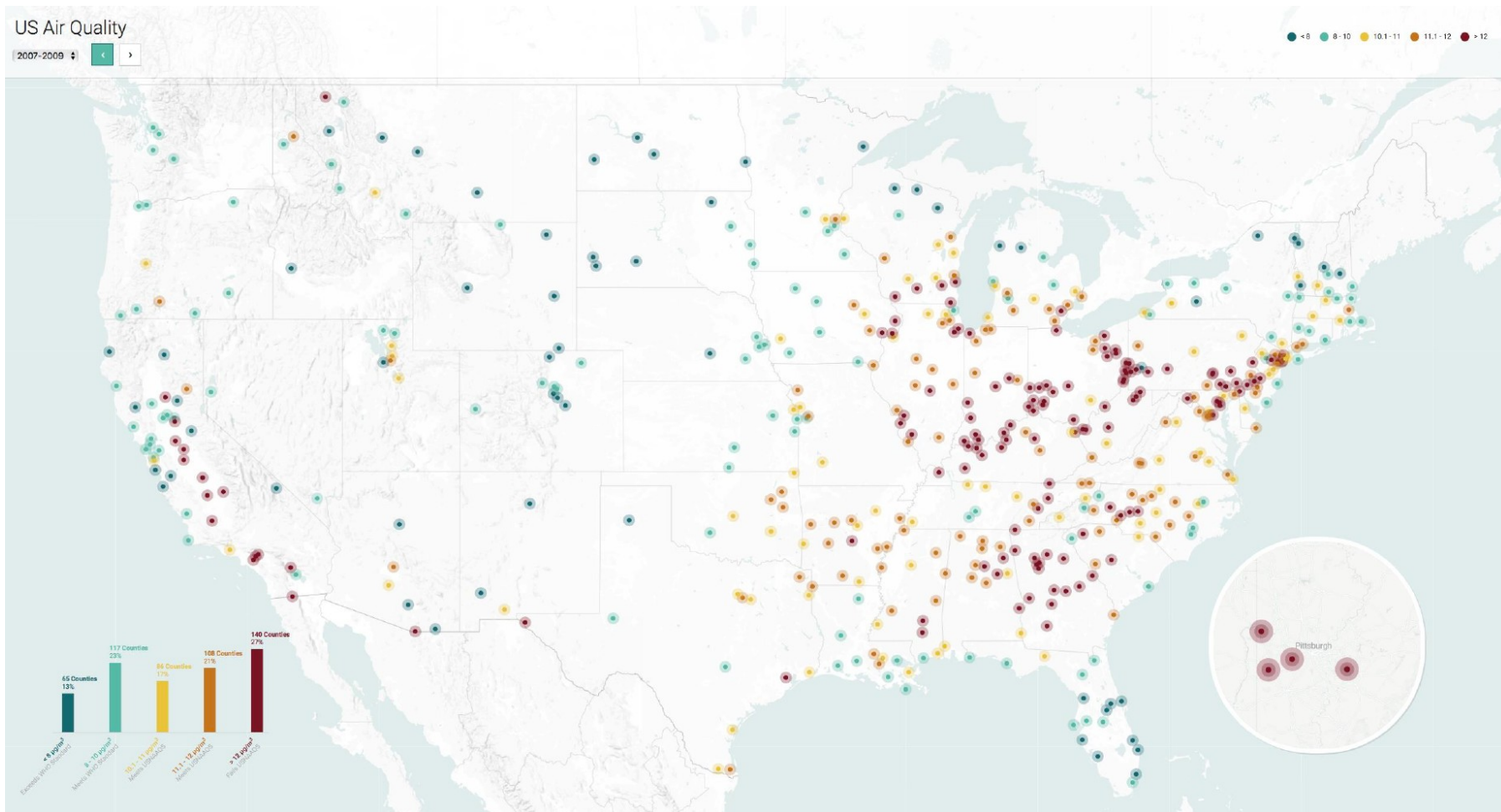
Source: Clean Air Task Force 2019

# County PM<sub>2.5</sub> Annual Design Value (DV) Trend 2006-2008



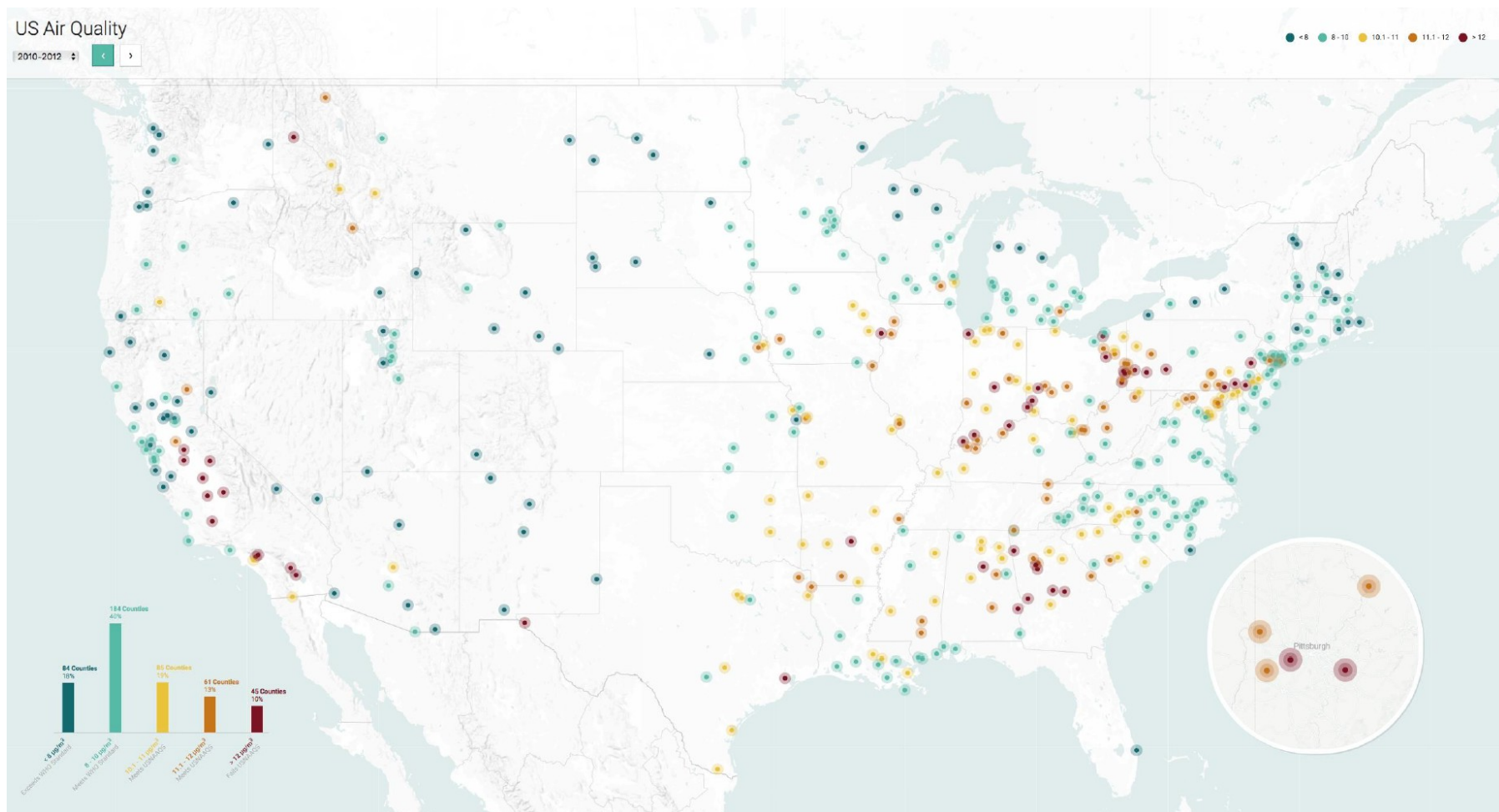
Source: Clean Air Task Force 2019

# County PM<sub>2.5</sub> Annual Design Value (DV) Trend 2007-2009



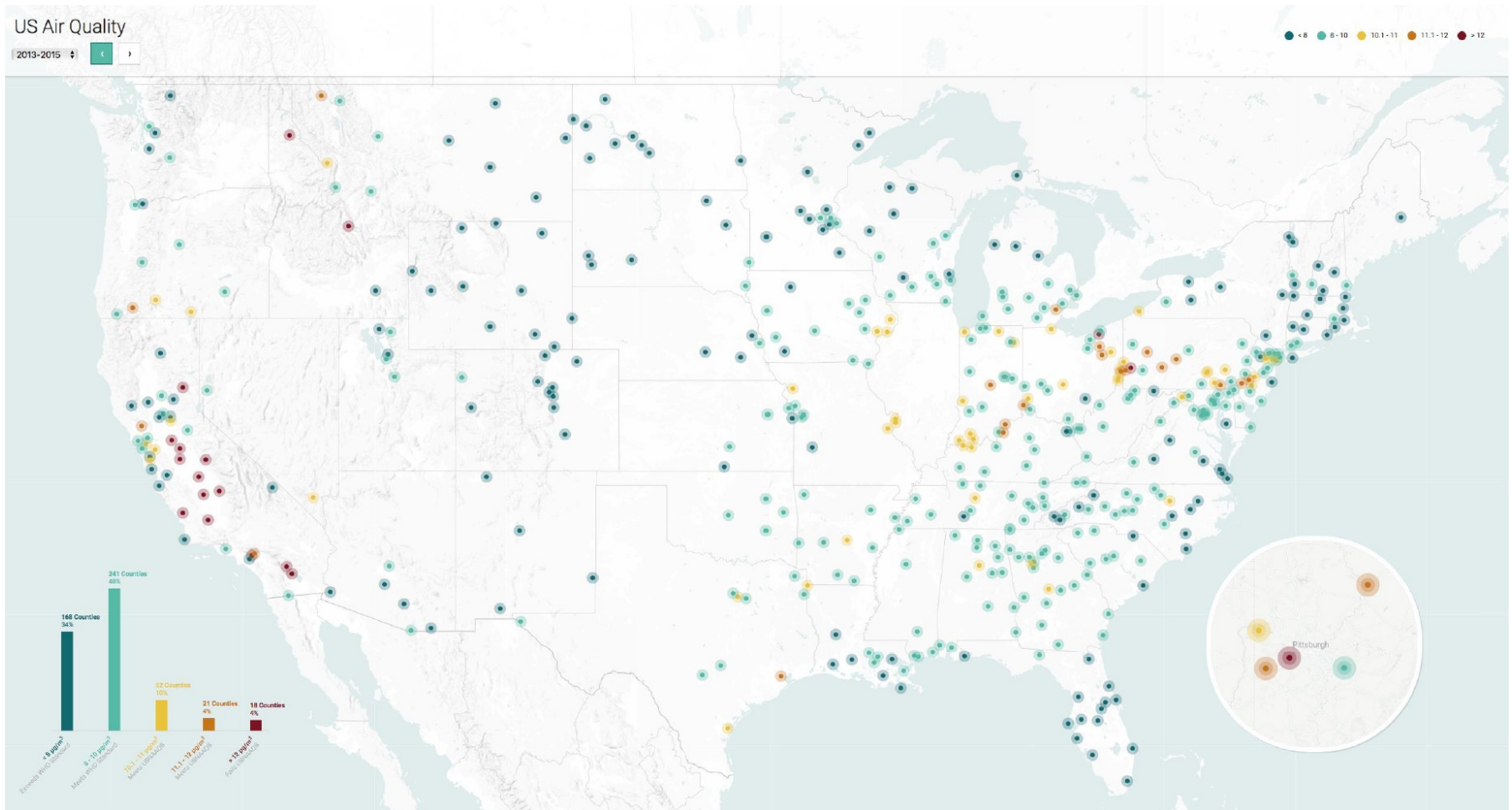
Source: Clean Air Task Force 2019

# County PM<sub>2.5</sub> Annual Design Value (DV) Trend 2010-2012



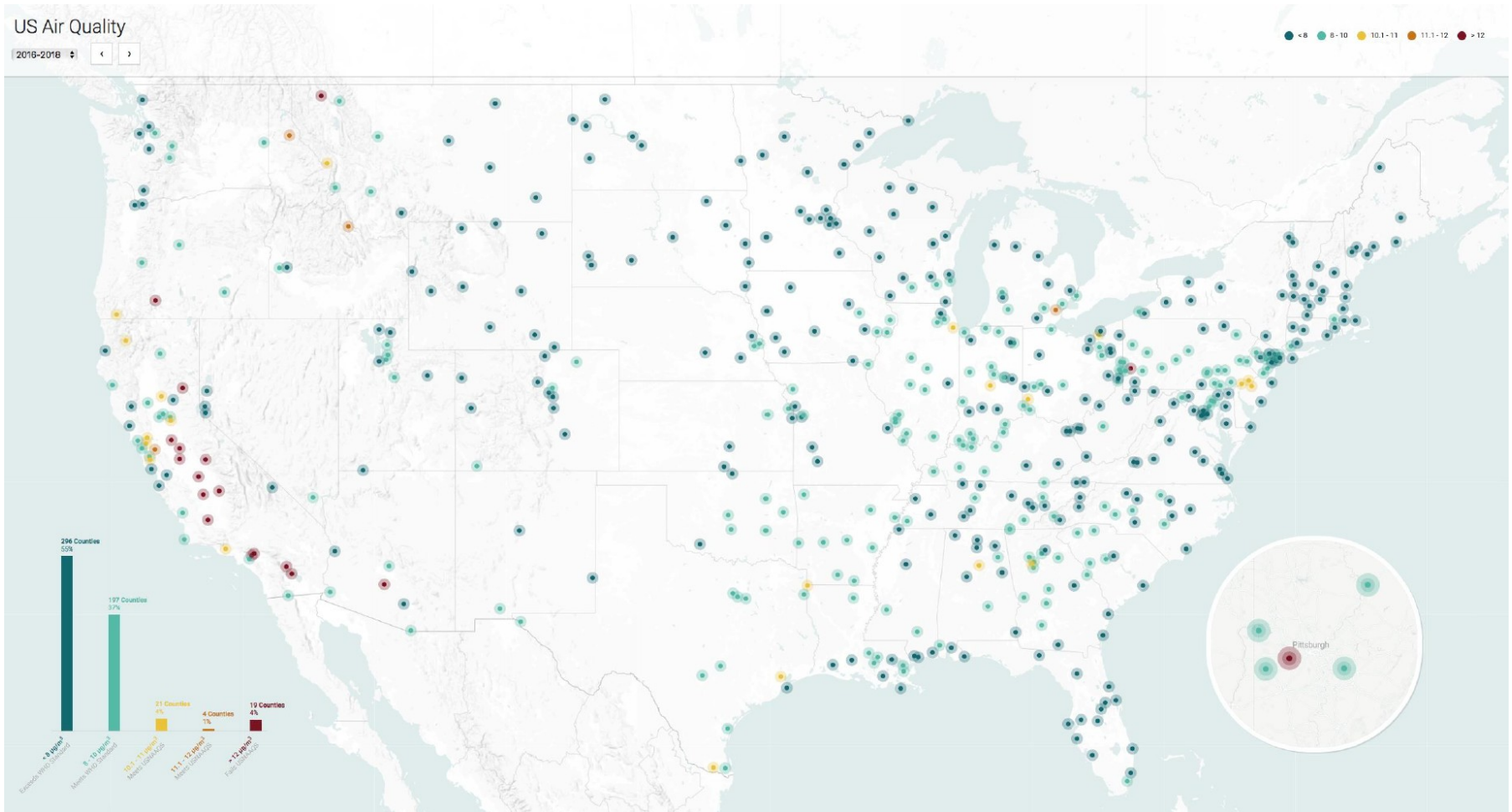
Source: Clean Air Task Force 2019

# County PM<sub>2.5</sub> Annual Design Value (DV) Trend 2013-2015



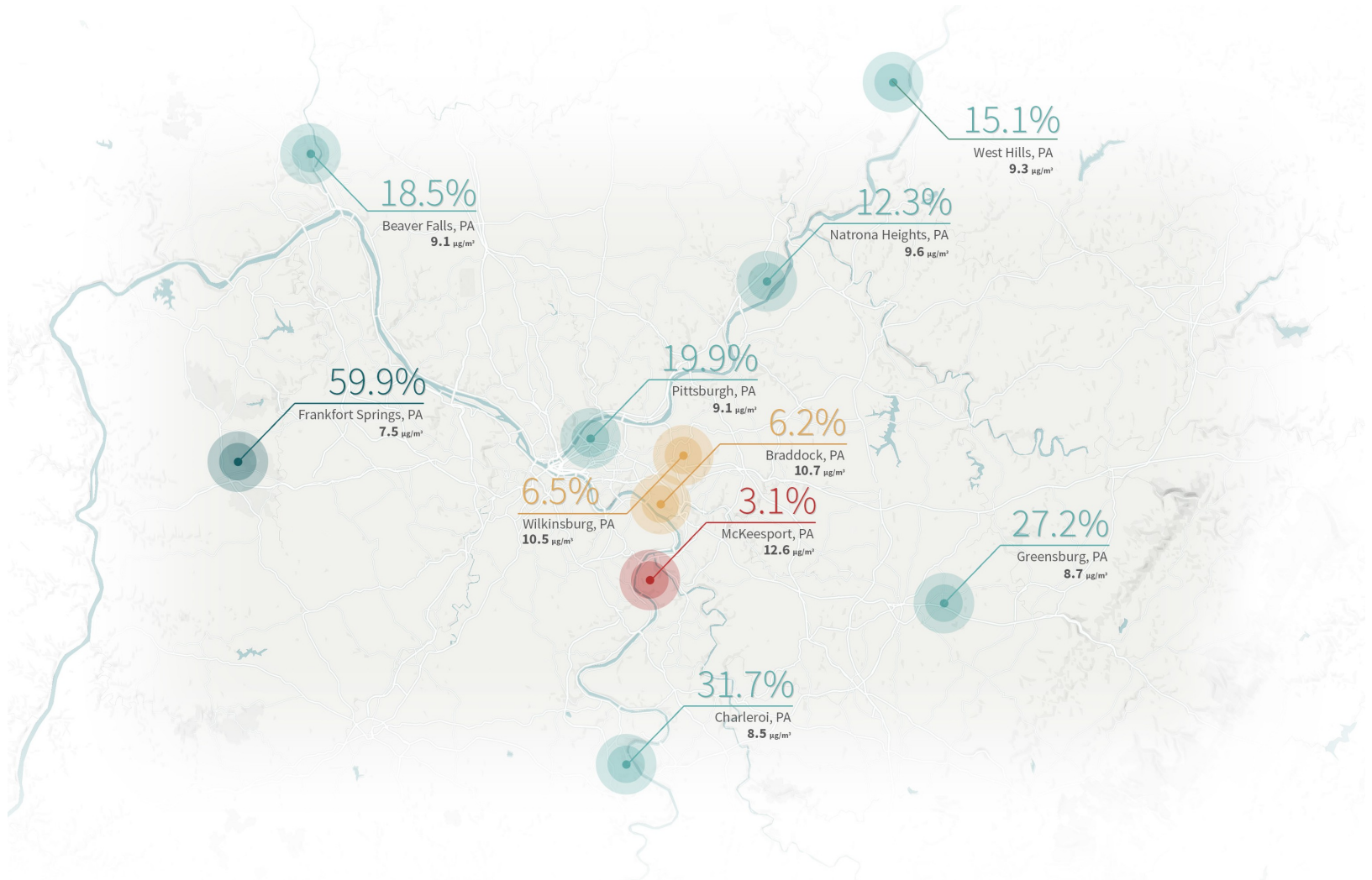
Source: Clean Air Task Force 2019

# County PM<sub>2.5</sub> Annual Design Value (DV) Trend 2016-2018



Source: Clean Air Task Force 2019

# Pittsburgh Area PM<sub>2.5</sub> Annual DVs 2016-2018



Source: Clean Air Task Force 2019



# PM 2.5: It is NOT just 1 monitor:

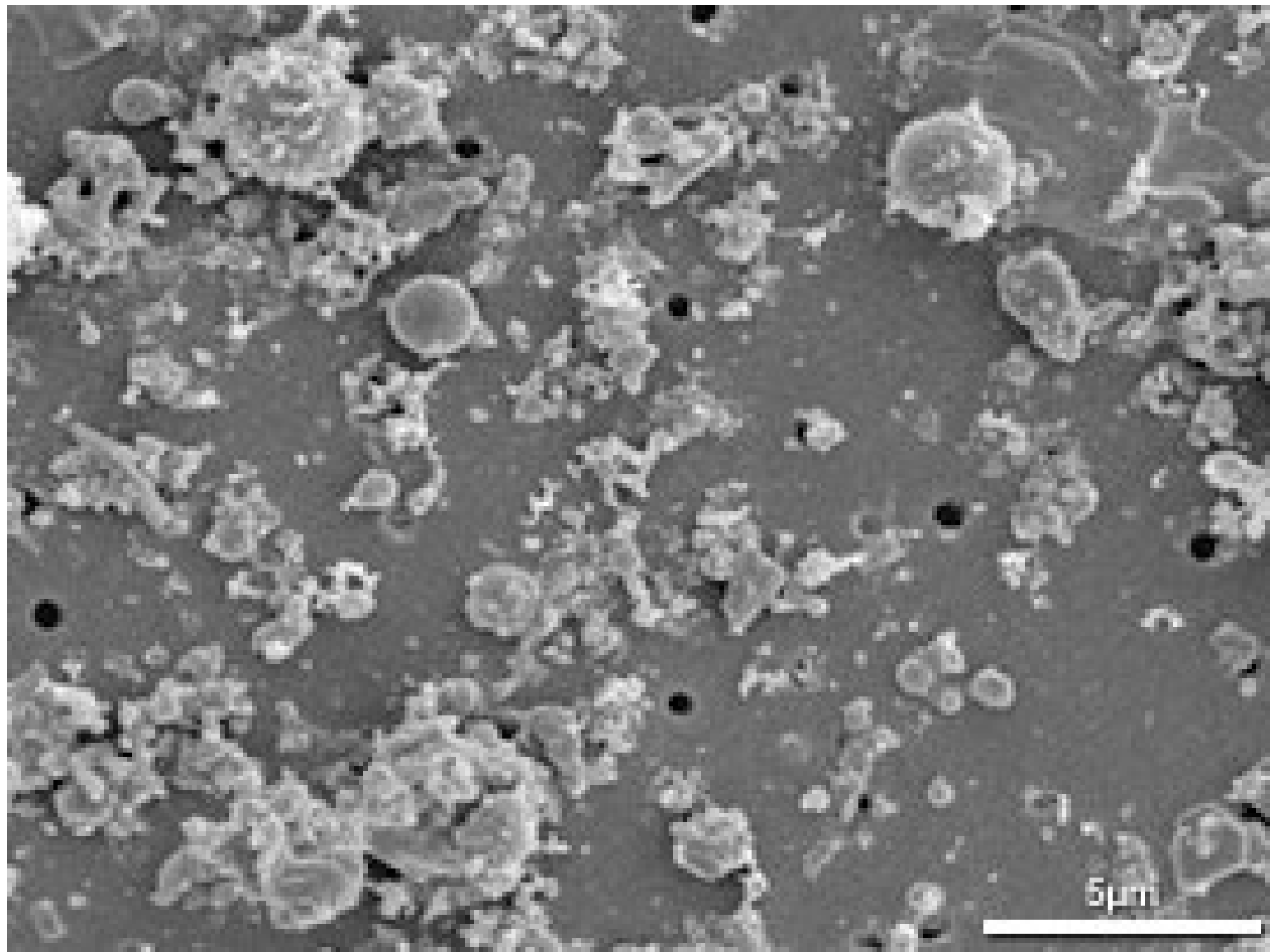
- There were eight PM 2.5 monitors in the Pittsburgh CSA with a valid annual 2017-19 DV
  - Three were in the worst 10%
  - Another two in the worst 20%
  - Two more in the worst 30%
  - One in the worst 40%.



# 2017 – 2019 AQI Pittsburgh MSA

	<u>2017</u>	<u>2018</u>	<u>2019</u>
<b>Red</b>	1	1	4
<b>Orange</b>	31	24	11
<b>Yellow</b>	241	204	215
<b>Green</b>	92	136	135

(Number of Days)



# Breathe Meter

## Our Air Ranks in the Dirtiest 11.46% of U.S. Cities

Click to Select City 

Select a city from the dropdown on the right to compare our air.

**PITTSBURGH**

**11.46%**

CLEANEST (100%)



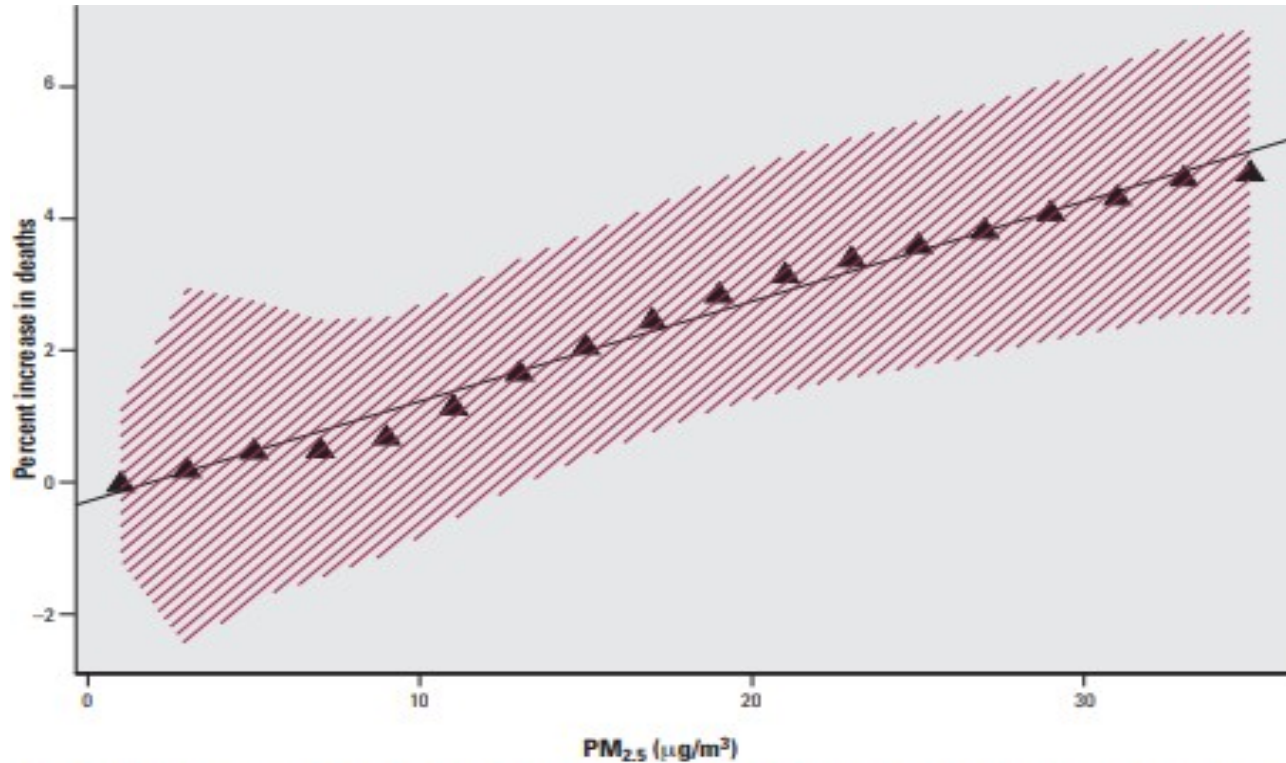
**NEW YORK, NY**

**51.4%**

DIRTIEST (0%)

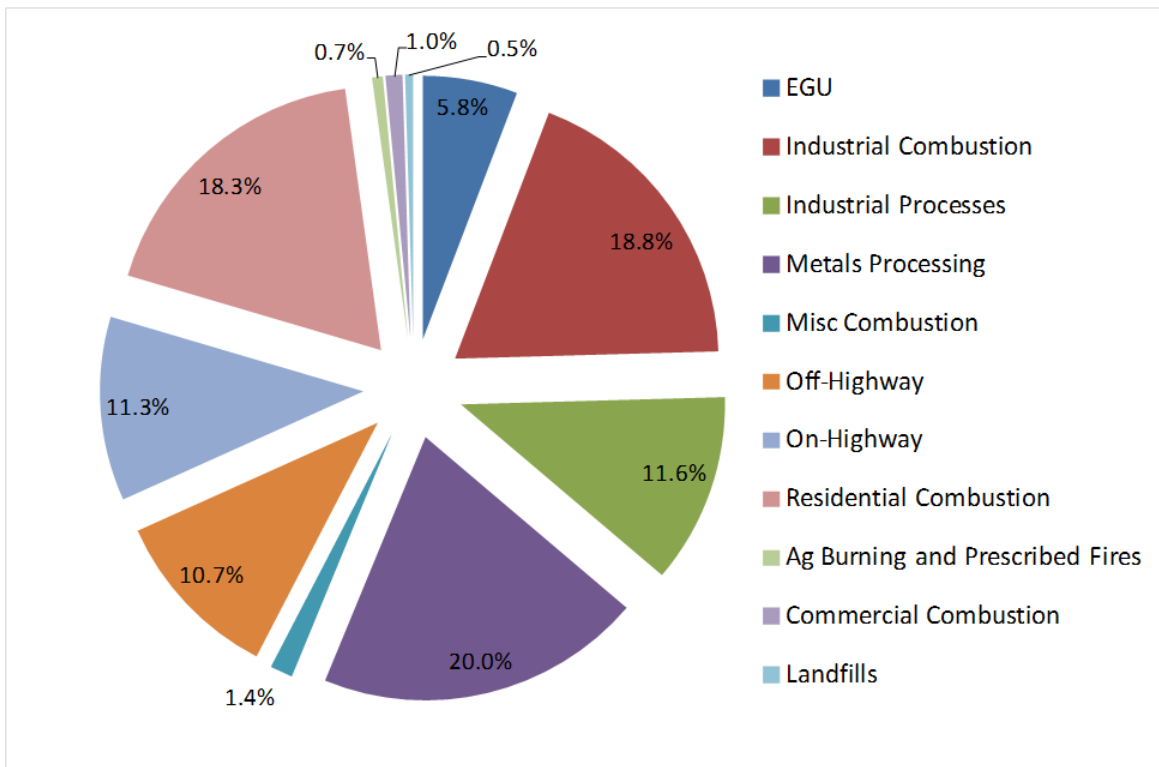
Percentile rank for average annual particle pollution out of 328 urban areas using U.S. EPA data from 2017-2019 (Clean Air Task Force, 2020).

# Associations quantified between PM exposure and acute health effects with no apparent lower bound



**Figure 1.** Overall estimated dose–response relation between total PM<sub>2.5</sub> and daily deaths in six U.S. cities. The estimate is obtained by combining the estimated smoothed curves in each of the cities, after controlling for weather, season, and day of the week. The shaded area indicates the pointwise 95% confidence intervals at each point. The line shown is a least-squares regression line through the estimated points.

Source: Schwartz et al, The Concentration Response Relation between PM 2.5 and Daily Deaths, EHP, 2002



**Industry: 58 %**

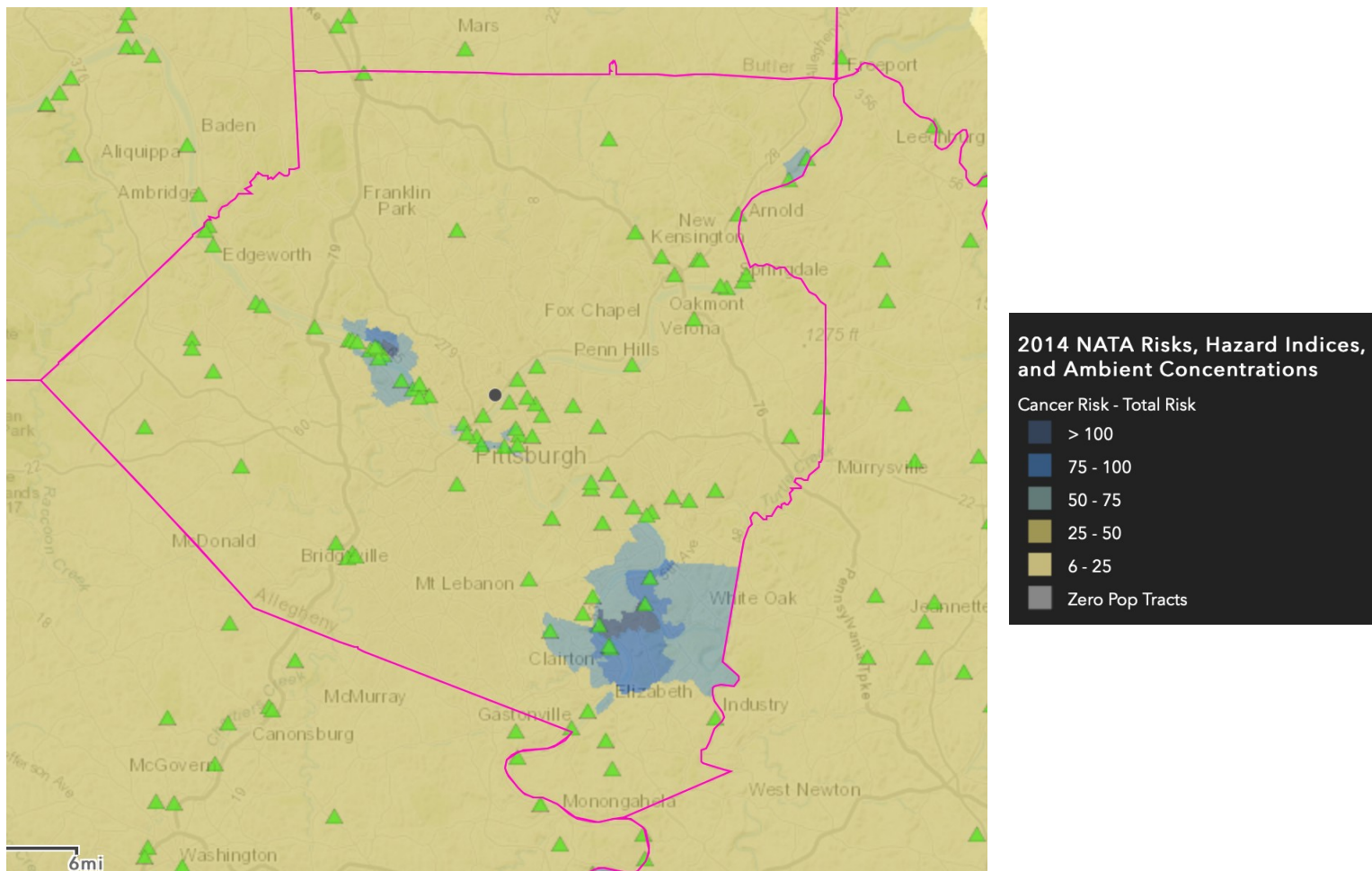
**Mobiles: 22 %**

**Other: 20 %**

Source: CATF 2015

Allegheny County Emissions from NEI 2011 v.2 PM2.5  
(filterable + condensable)

# Allegheny County: Cancer Risk



Source: 2014 National Air Toxics Assessment

# Breathe Cam Videos

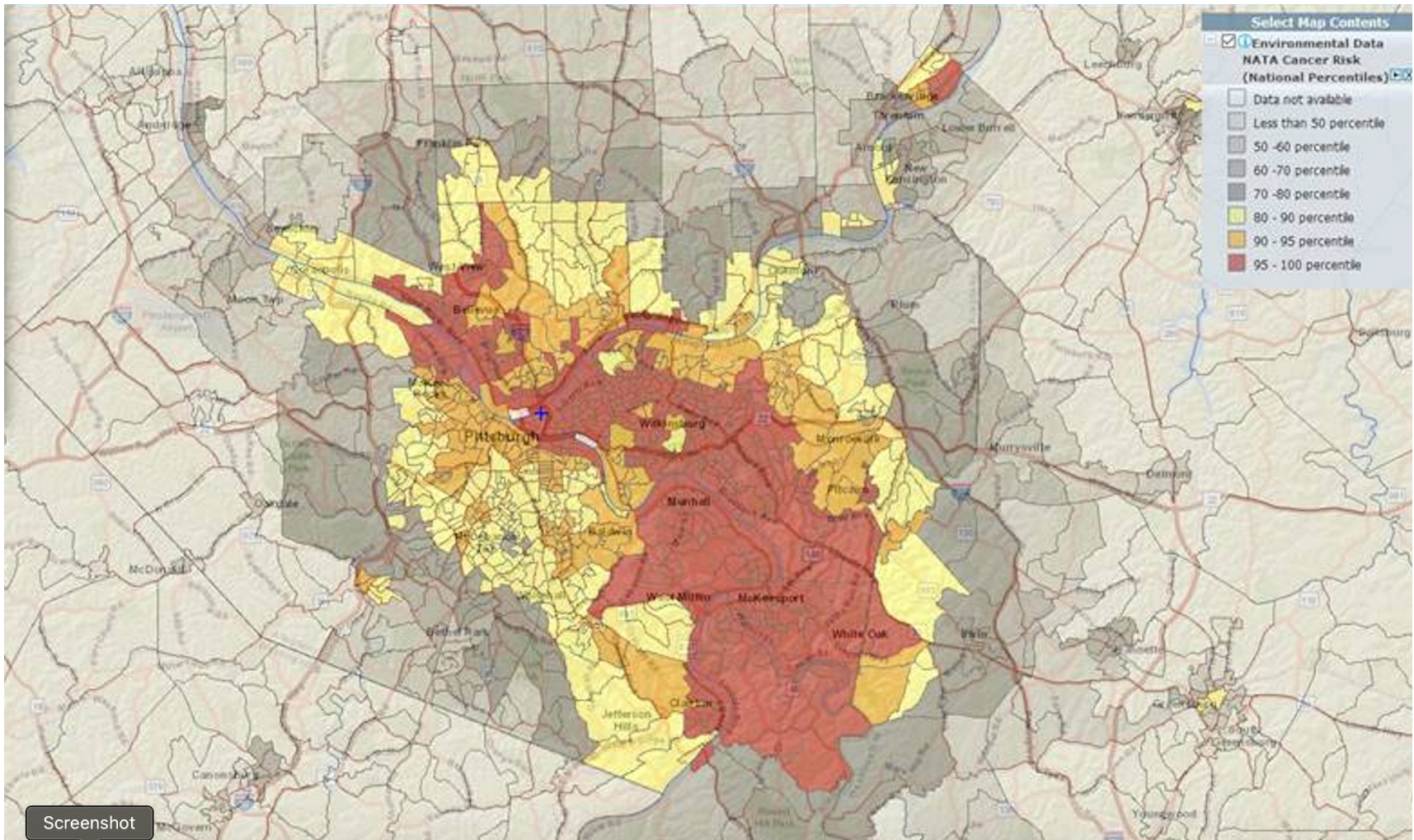
[Clairton Coke Works, December 24, 2018](#)

[Edgar Thomson Works, June 18, 2020](#)

[Edgar Thomson Works, June 23, 2020](#)

[Edgar Thomson Works, July 4, 2020](#)

# Allegheny County: Cancer Risk



Source: 2014 National Air Toxics Assessment



# Allegheny County, PA

Groups At Risk		
Total Population:	1,223,048	Risks to the population
Pediatric Asthma:	20,456	Risks to people with Asthma
Adult Asthma:	101,079	Risks to people with Asthma
COPD:	65,853	Risks to people with COPD
Lung Cancer:	786	Risks to people with lung cancer
Cardiovascular Disease:	101,907	Risks to people with Cardiovascular Disease
Diabetes:	103,941	Risks to people with Diabetes
Children Under 18:	230,313	Risks to children and teens
Adults 65 & Over:	225,605	Risks to older adults
Poverty Estimate:	132,929	Risks to people with low incomes

**We still have a serious air  
quality problem**

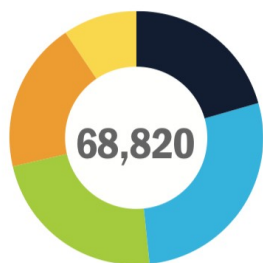
**Adding to our airshed burden will  
only make things worse.**



# CLEAN JOBS PENNSYLVANIA

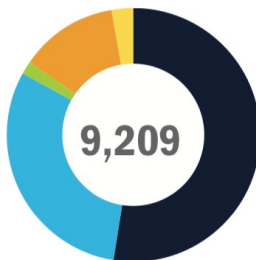
90,772 CLEAN ENERGY JOBS ACROSS PENNSYLVANIA<sup>1</sup>

2019



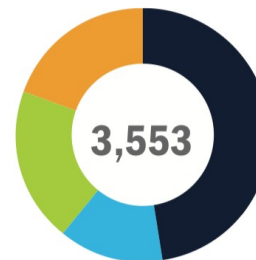
## ENERGY EFFICIENCY:

- ENERGY STAR & Lighting: **14,286**
- Trad. HVAC: **19,008**
- High-Efficiency HVAC & Renewable H&C: **15,986**
- Adv Materials: **13,105**
- Other: **6,435**



## RENEWABLE ENERGY:

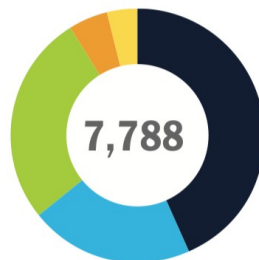
- Solar: **4,846**
- Wind: **2,815**
- Geothermal: **151**
- Bioenergy/CHP: **1,166**
- Low-Impact Hydro: **232**



## GRID & STORAGE:

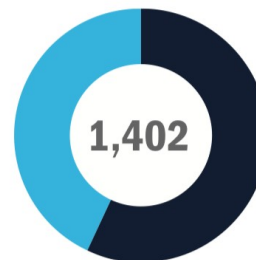
- Storage: **1,692\***
- Smart Grid: **473**
- Micro-Grid: **700**
- Other Grid Modernization: **688**

\* Storage includes pumped hydro storage, battery storage, thermal storage, and mechanical storage detailed technologies.



## CLEAN VEHICLES:

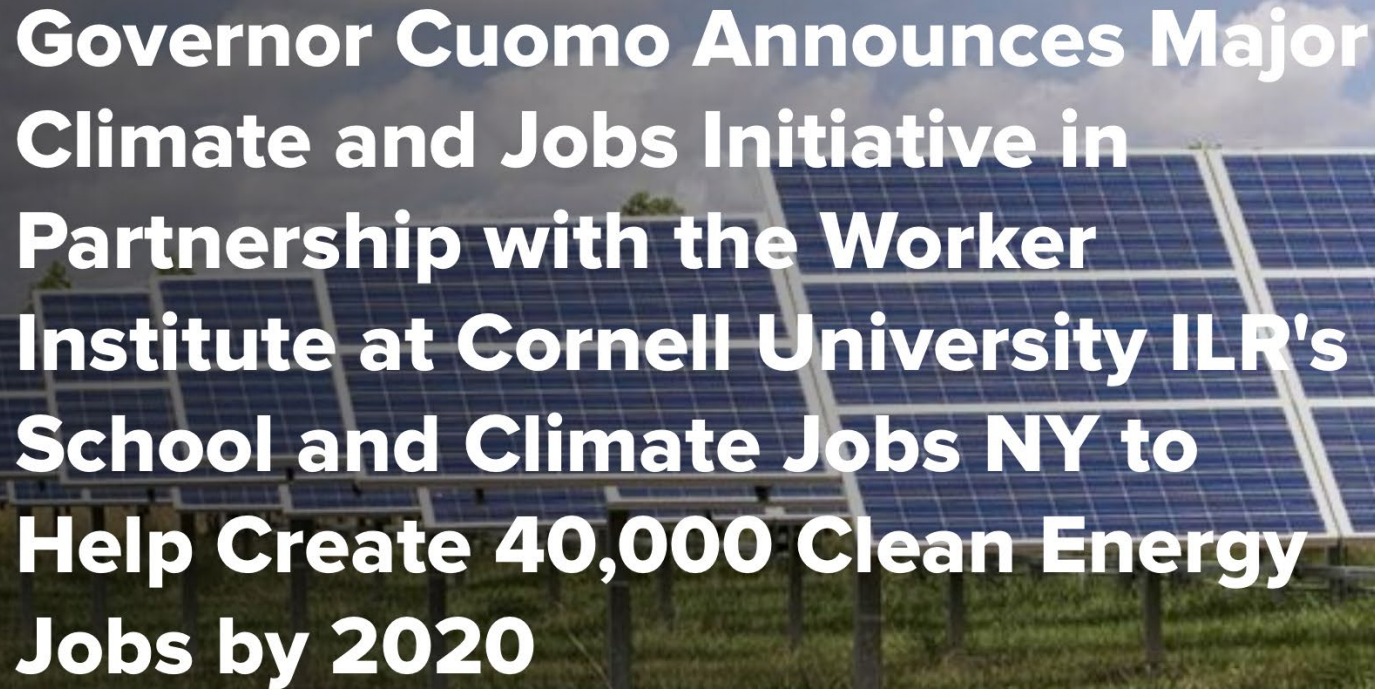
- Hybrid Electric Vehicles: **3,389**
- Plug-In Hybrid Vehicles: **1,626**
- Electric Vehicles: **2,087**
- Natural Gas Vehicles: **385**
- Hydrogen & Fuel Cell: **301**



## FUELS:

- Other Ethanol/Non-Woody Biomass: **802**
- Other Biofuels: **600**

Source: <https://www.e2.org/reports/clean-jobs-pennsylvania-2019/>



# **Governor Cuomo Announces Major Climate and Jobs Initiative in Partnership with the Worker Institute at Cornell University ILR's School and Climate Jobs NY to Help Create 40,000 Clean Energy Jobs by 2020**

Initiative Will Accelerate Renewable Energy Growth With up to \$1.5 Billion Investment in Renewable Energy Projects

Largest Clean Energy Procurement by a State in U.S. History Strengthens New York's Position as National Leader on Climate Change



**Thank You**

**[mmehalik@breatheproject.org](mailto:mmehalik@breatheproject.org)**

Site of concern

Under the Birmingham Bridge: Lindy Paving, Lehigh Hanson

### Possible Emission Sources within the Lindy Paving Facility, Second Ave.



Pictures taken on October 23, 2020 as described on last slide. Possible problematic emission source include the Significant amount of diesel truck traffic. Arrows denote a dump truck in process of being loaded with asphalt (#1) and column of 5-6 more waiting behind (#2). Idling is a likely possibility. #3 points to a an obvious stack of some sort where hot emissions emerge as evident by greater opacity and upward movement.

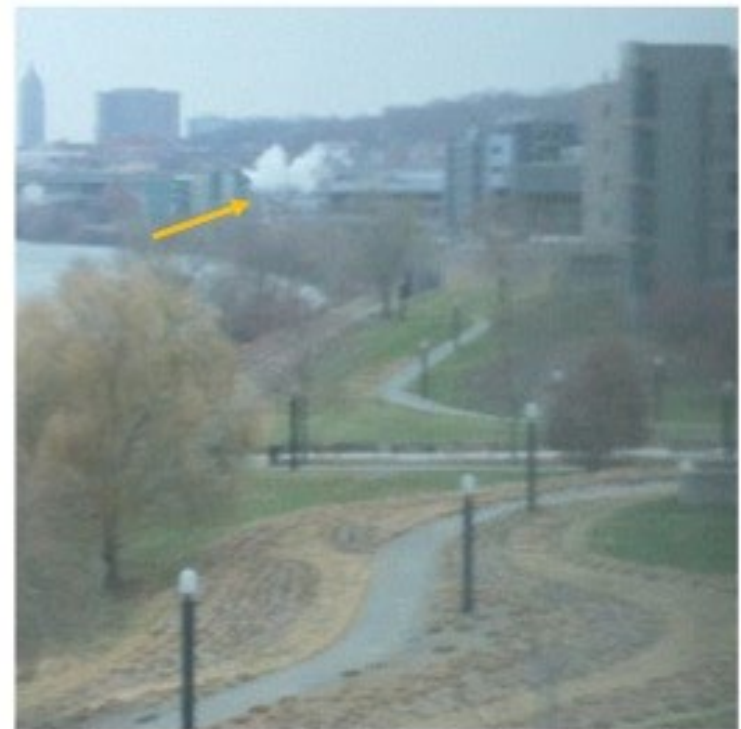


**Generalized Emissions from Lindy Paving, Second Ave., Pittsburgh PA Visible from a Distance.**



**September 24, 2013**

Pictures shot from the location of 100 Technology Dr/  
Hot Metal bridge looking north. Arrows indicate visible  
emission plumes on 2 separate days.



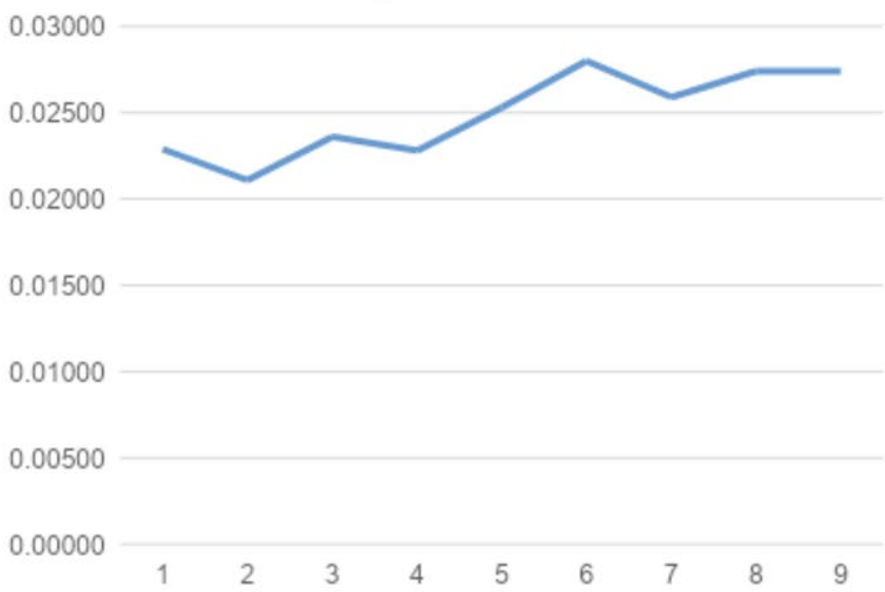
**November 20, 2014**

NOx
CO
Particulate Matter
PM (filterable)
PM10
PM2.5
SOx
VOC
Hexane
Formaldehyde
Benzene
Toluene
Naphthalene
1,3-Butadiene
HAP
Ammonia
CO2e
VOC (ERC)

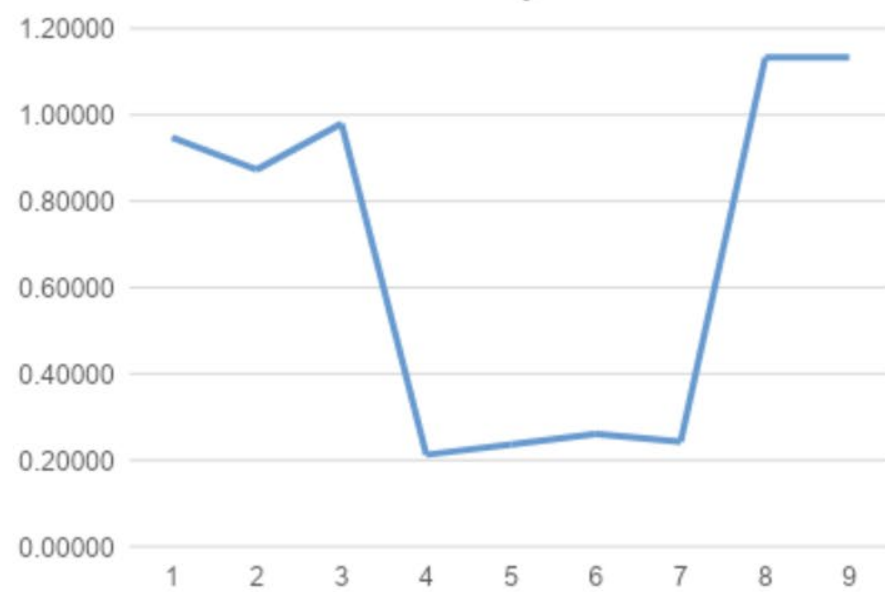
[Center for Health and Environmental Justice](#)  
[Asphalt Plant work](#)

Emissions SnapShot

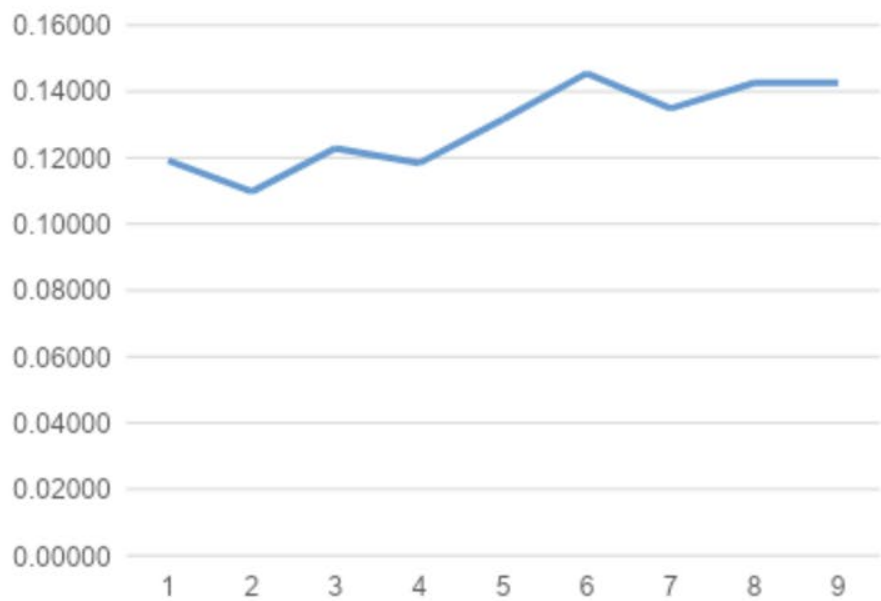
### Ethyl Benzene



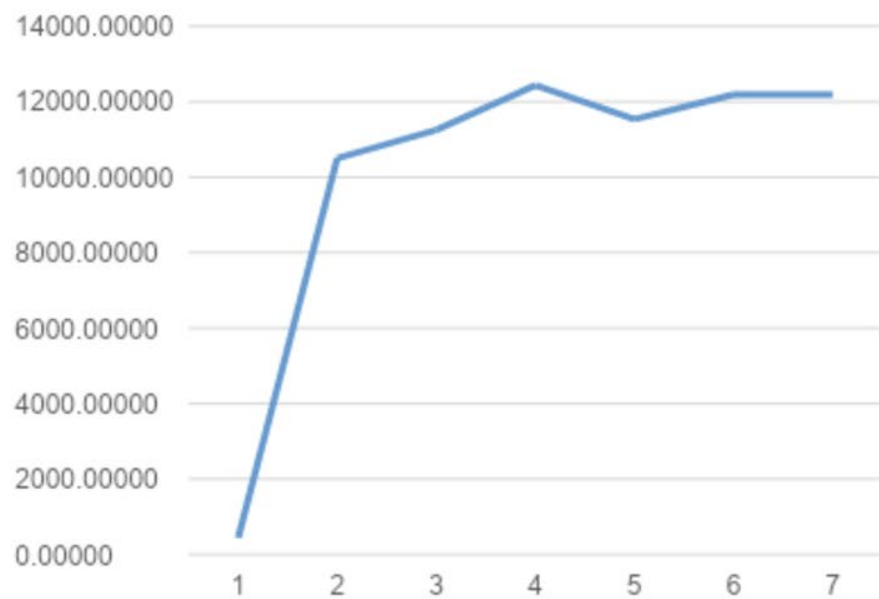
### Formaldehyde



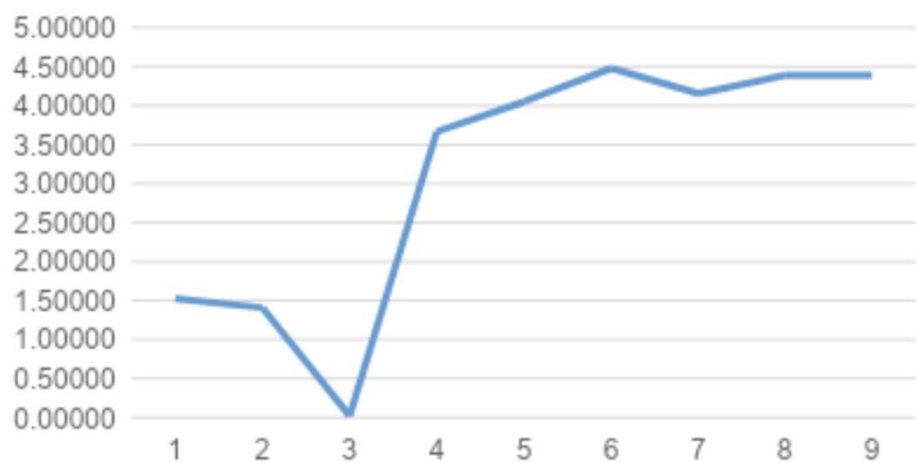
### Benzene



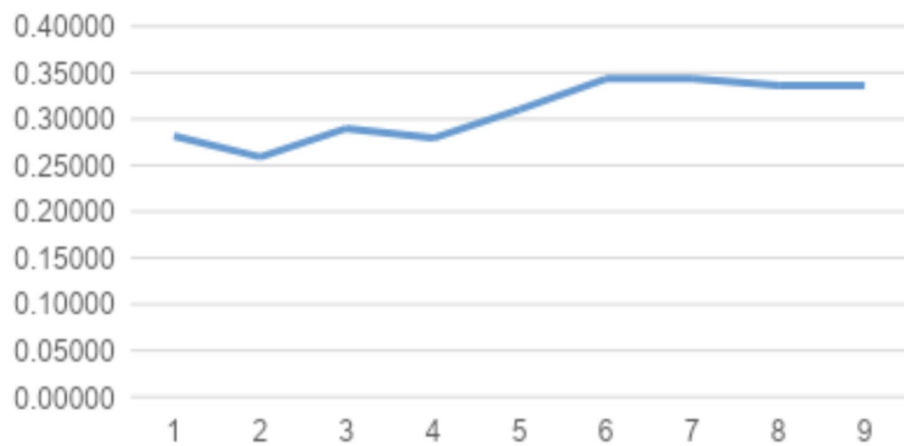
### Carbon Dioxide



### Methane



### Hexane



## **Permit Renewal / Public Input**

- What do we want to know before then?

## **Interim Actions**

- SmellPgh App Sign-ups and Use
- Monitor host sign-ups and acquisitions
- Photographic Observation and Documentation
- Story/Experiential recordings and sharing out
- Look for project opportunities to integrate air quality data collection and improvements
- Communicate with City and Council representatives

Be Proactive

**smellpgh.org**

**www.purpleair.com**

**airvizinc.com**

**environmentaldata.org**

Monitoring Network; Filling Gaps

# THANK YOU!

- The next Oakwatch meeting is Wednesday, February 17 at 12pm via Zoom
- Next Oakland-Wide Community Meeting is Tuesday, February 23 at 6pm via Zoom and Facebook Live
- Event calendar – [www.opdc.org/events](http://www.opdc.org/events)
- Social Media
  - [facebook.com/opdc.org](https://facebook.com/opdc.org)
  - [instagram.com/oaklandplanning](https://instagram.com/oaklandplanning)
  - [twitter.com/oaklandplanning](https://twitter.com/oaklandplanning)
- General inquiries – [questions@opdc.org](mailto:questions@opdc.org)