

OAKLAND-WIDE COMMUNITY MEETING

JULY 28, 2020

Jobs & Financial
Coaching



Youth



Community
Land Trust



Neighborhood
Quality



Affordable
Housing



OPDC

Oakland Planning
and Development
Corporation

AGENDA

- OPDC and community updates and announcements
 - OPDC food distribution and home repair assistance
 - *An Evening of Oakland Storytelling* annual fundraiser
 - Oakwatch, Oakland Plan action teams, November primary
- Pittsburgh Technology Center parking garage: Indovina Architects is working with the URA to design a new parking garage at the Pittsburgh Technology Center on Second Avenue.
- University of Pittsburgh
 - Cathedral of Learning railings: Pitt plans to replace and add ADA compliant railings around the Cathedral of Learning.
 - Fall semester plan related to COVID-19

OPDC PROGRAM UPDATES



Food Distribution

- **South Oakland** – Frazier Fieldhouse – Tuesdays and Thursdays from 3 – 5pm. Saturdays from 12 – 2pm.
- **West Oakland** – Friendship Community Church – Thursdays from 3 – 5pm.

Contact Andrea Boykowycz at 412.621.3821 x17 or aboykowycz@opdc.org



Home Repair Assistance

- **OPDC Façade Grant Program** - Up to \$5,000 reimbursement grants for exterior repairs
- **Oakland Community Land Trust (CLT)** – Sr. Oakland homeowners – up to \$22,500 in home repairs

Contact Annmarie Malbon at 412.621.7863 x14 or amalbon@opdc.org

OPDC

Oakland Planning
and Development
Corporation

AN EVENING OF OAKLAND STORYTELLING



THURSDAY, AUGUST 13 AT 7PM

An Evening of Oakland Storytelling *in your home*

Featuring stories from Ty Williams and Laura Zurowski,
and a story and music by Sierra Sellers



WALNUT CAPITAL
THE BEST IN CITY LIVING

NexTier Bank, UPMC, PNC,
Carnegie Library of Pittsburgh,
WESA, WYEP, Storyburgh

- Our annual fundraiser featuring Oakland stories returns in a virtual format on August 13
- To support OPDC with a donation and registration for the event, visit opdc.org/an-evening-of-Oakland-storytelling

OPDC

Oakland Planning
and Development
Corporation

OAKWATCH, ACTION TEAMS, NOVEMBER 3 ELECTION

OAKWATCH MEETINGS

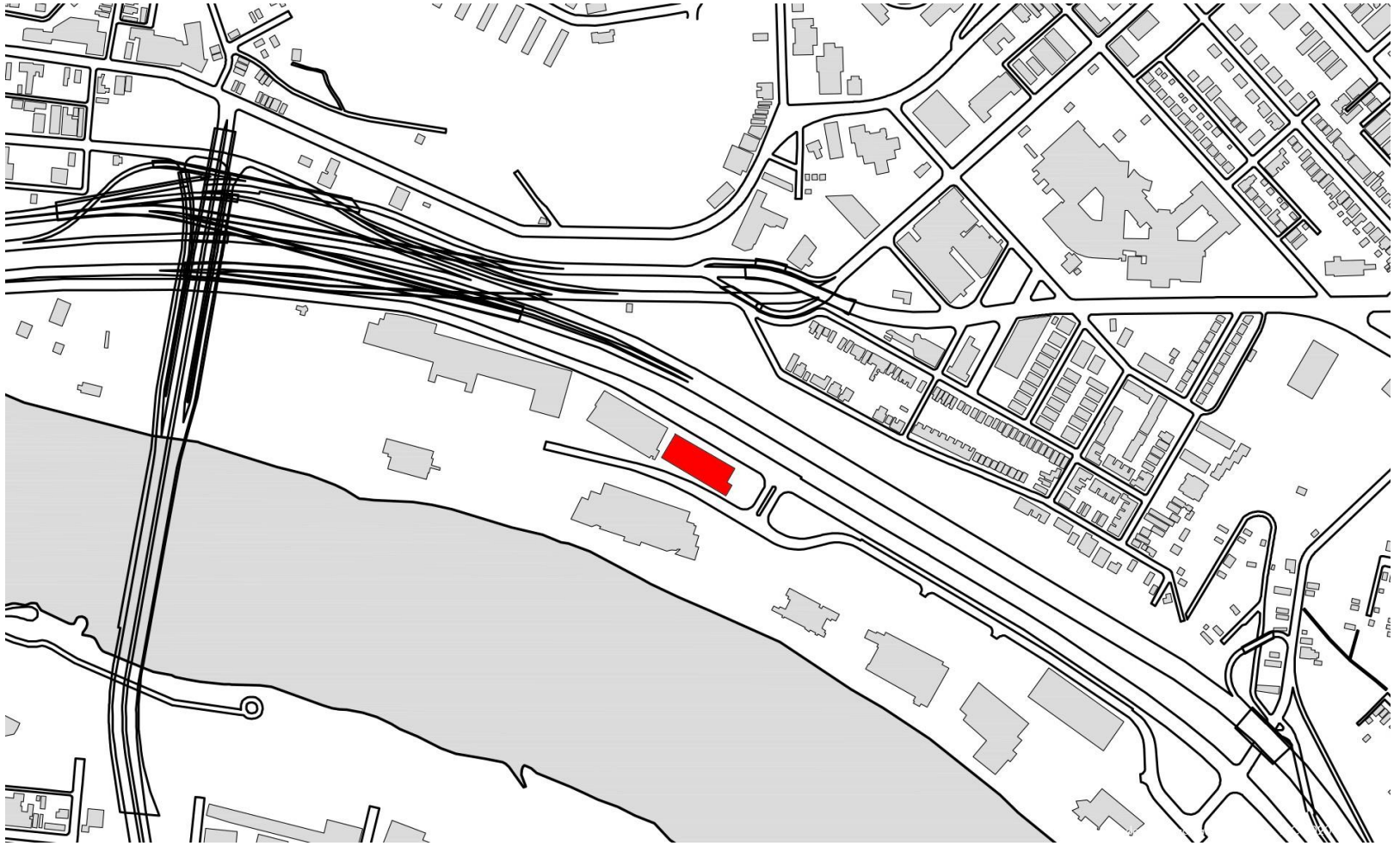
- OPDC works with community partners to identify, advocate, and monitor code violations.
- Next meeting is September 16 at 6pm.
- Visit opdc.org/events for more information

OAKLAND PLAN ACTION TEAMS

- Join an action team and help develop projects and programs for the Oakland Plan.
- Sign up at pittsburghpa.gov/dcp/action-teams

NOVEMBER 3 GENERAL ELECTION

- Registered voters, apply for a mail-in ballot at votespa.com.
- Completed ballots must be received by your county election office by 5pm on October 27.



Context Map

Pittsburgh Technology Center - Parking Garage
No. 3

Urban Redevelopment Authority of Pittsburgh

Indovina
Associates
Architects





From Southwest Corner of Technology Drive



Tree line to be preserved on Site



From Second Avenue



Crosswalk on Technology Drive



From Northeast Corner of Technology Drive & Second Ave



Adjacent Existing Garage from Second Ave

Existing Site Photos

Pittsburgh Technology Center - Parking Garage
No. 3

Urban Redevelopment Authority of Pittsburgh

Indovina
Associates
Architects



Zoning Regulations

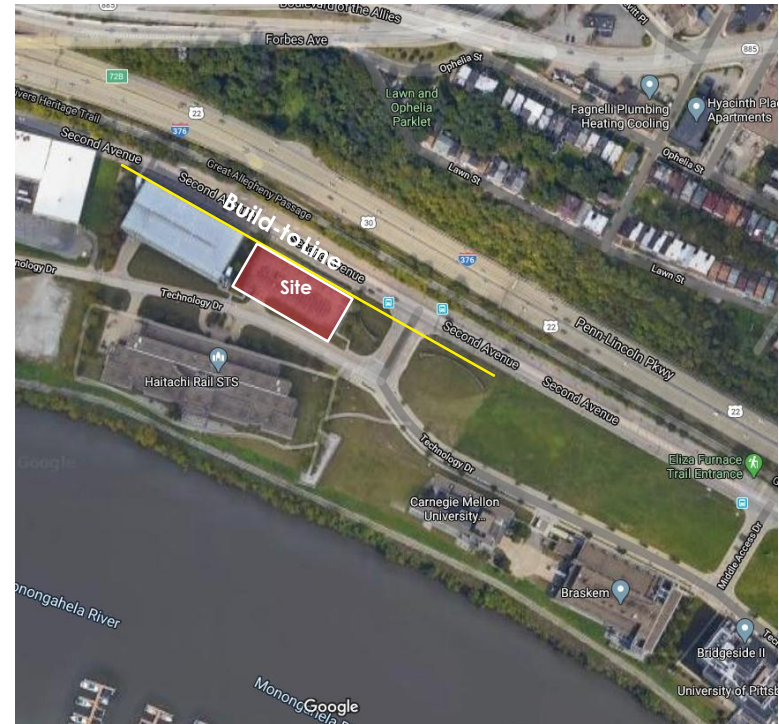
Zoning District	SP-1 Pittsburgh Technology Center
Permitted Uses	Parking Garages to support development in SP-1 District
Minimum Height	Parking Structures - (3) stories or (45) feet
Maximum Height	(90) feet

Preliminary Land Development Plan

Setback Requirements	Utilize Build-to lines of existing structures
Height Restrictions	Height Subdistrict B Maximum Height of Garage - (60) feet - 5 1/2 stories
Proposed Revision to PLDP	Maximum Height of Garage - (90) feet - 7 stories

General Garage Information

Parking Spaces	600
Bicycle Parking Spaces	60
Area (footprint) Height	31,268 square feet
Stories	86 feet
	6

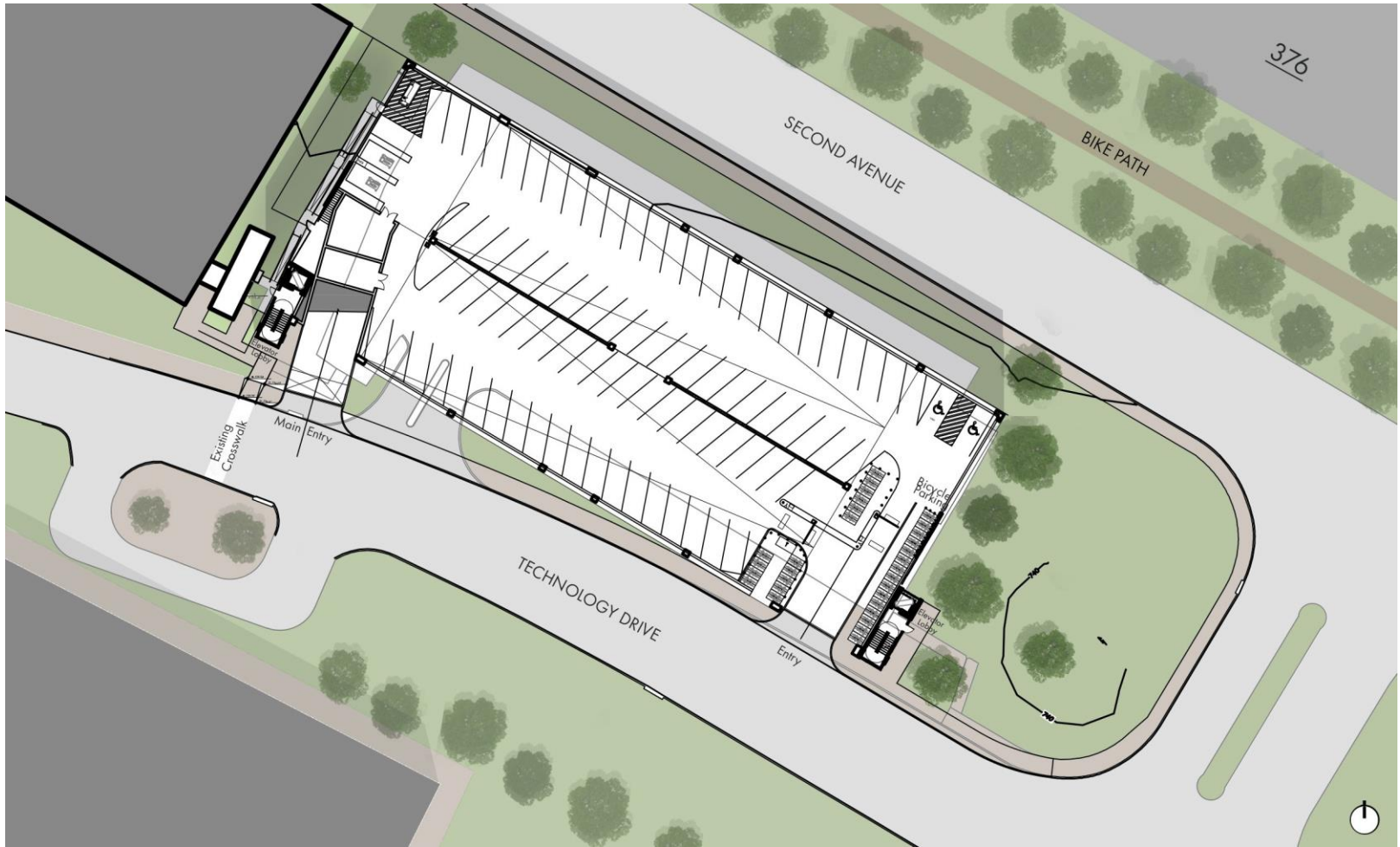


Zoning Summary

Pittsburgh Technology Center - Parking Garage No. 3

Urban Redevelopment Authority of Pittsburgh





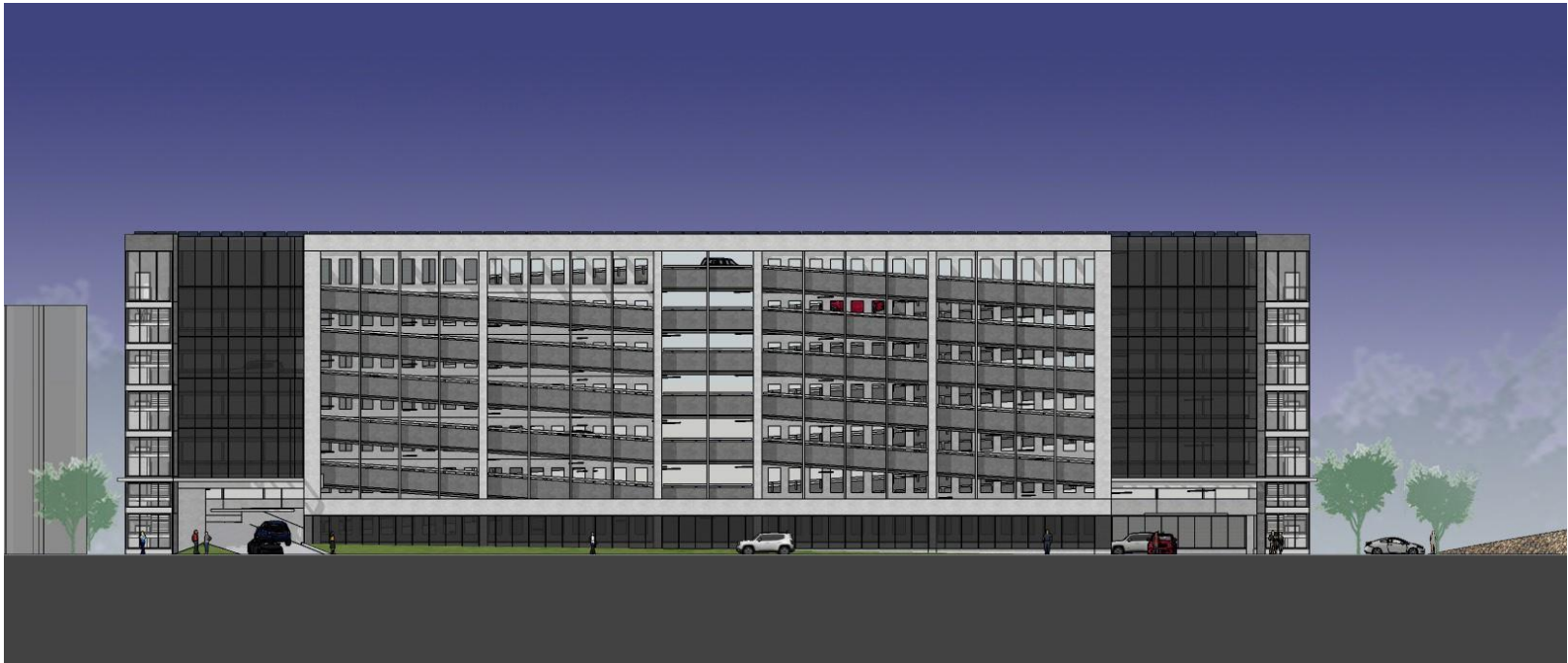
Site Plan

Pittsburgh Technology Center - Parking Garage No. 3

Urban Redevelopment Authority of Pittsburgh

Indovina
Associates
Architects





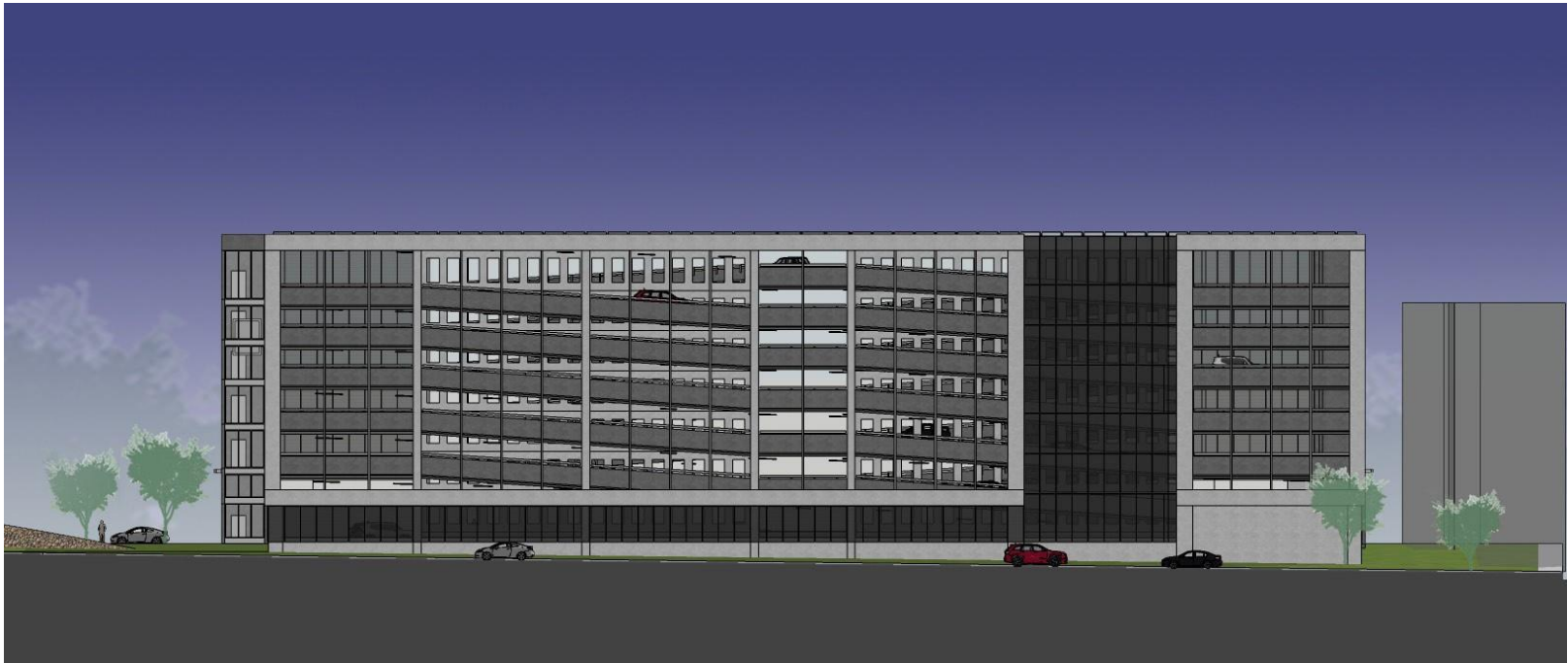
South Elevation

Pittsburgh Technology Center - Parking Garage
No. 3

Urban Redevelopment Authority of Pittsburgh

Indovina
Associates
Architects





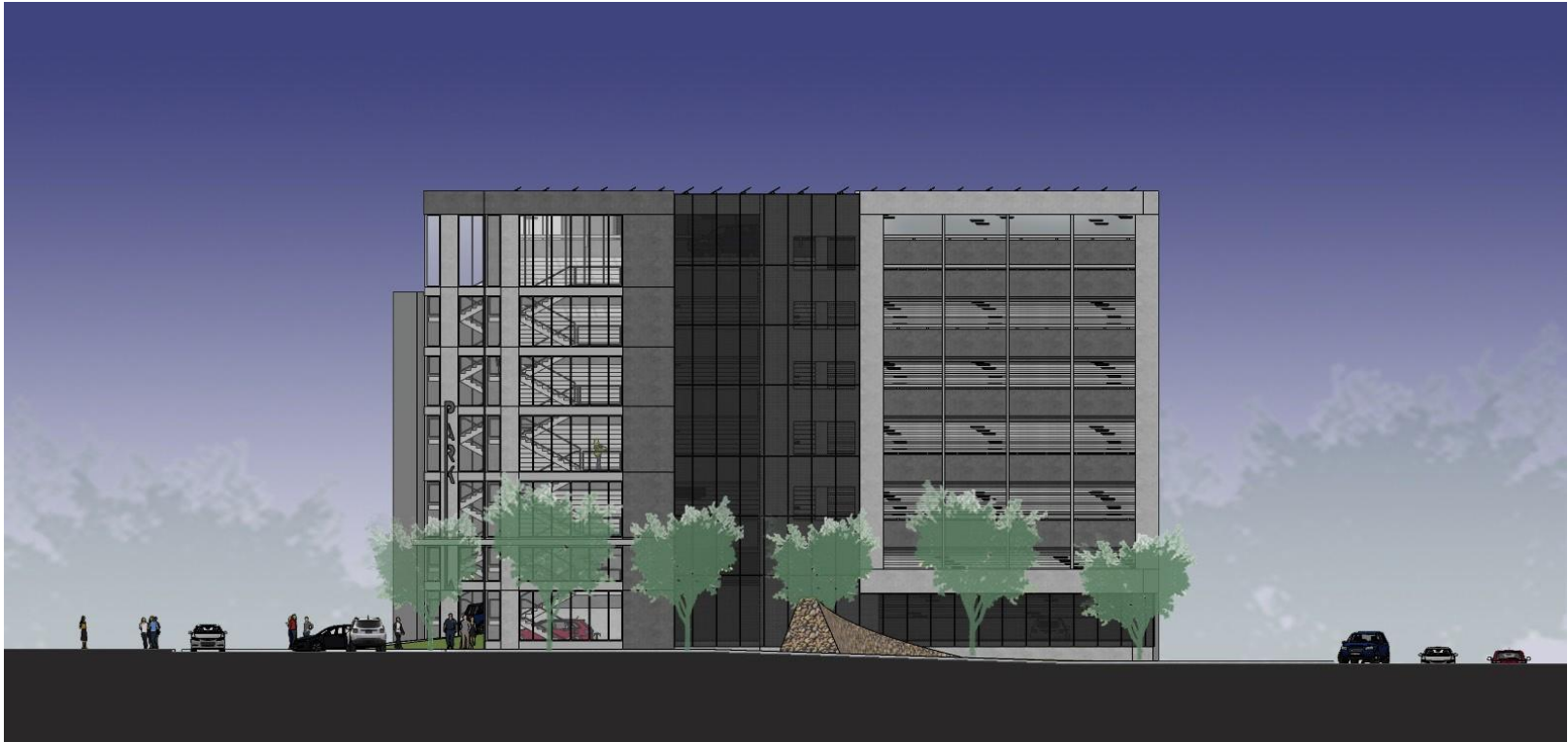
North Elevation

Pittsburgh Technology Center - Parking Garage
No. 3

Urban Redevelopment Authority of Pittsburgh

Indovina
Associates
Architects





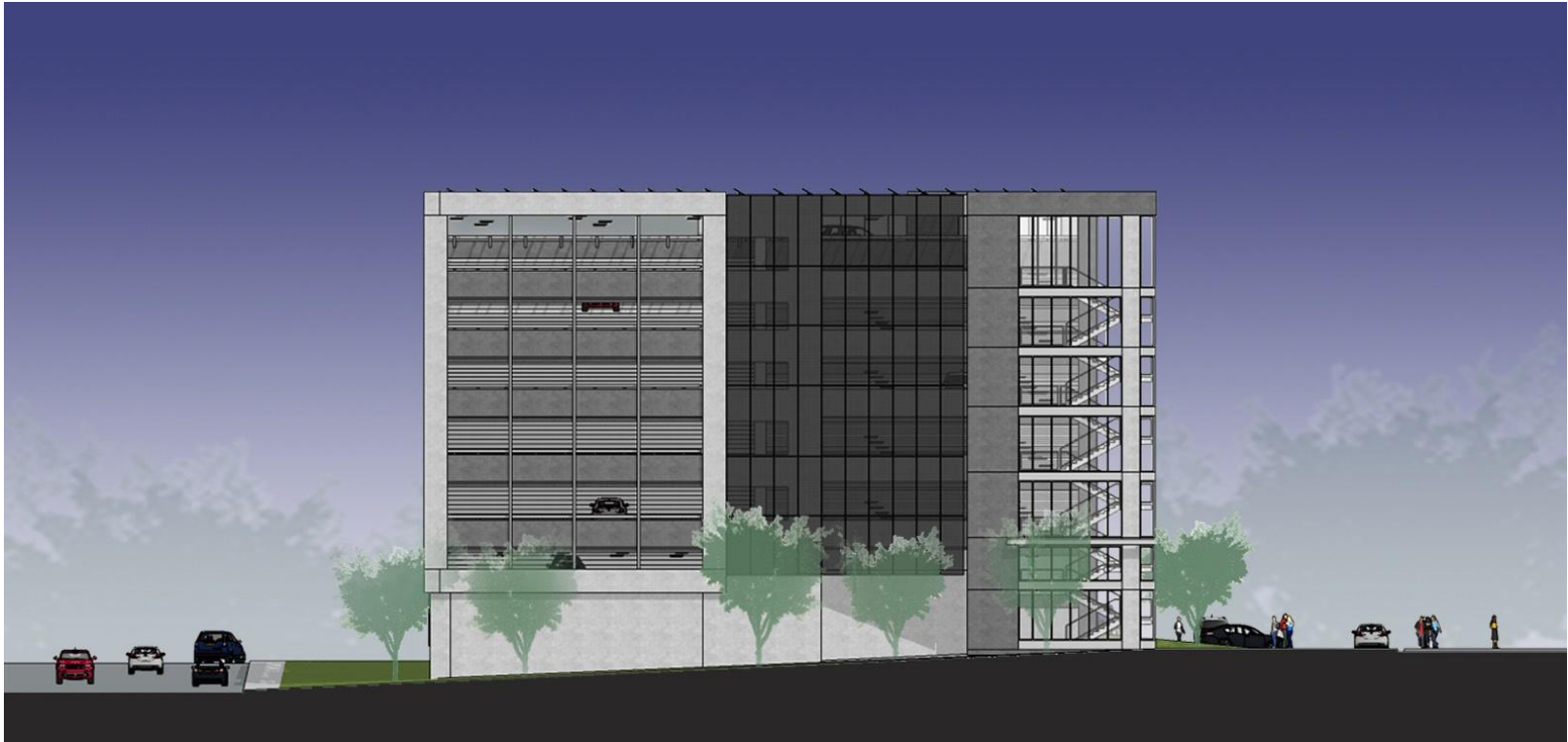
East Elevation

Pittsburgh Technology Center - Parking Garage
No. 3

Urban Redevelopment Authority of Pittsburgh

Indovina
Associates
Architects





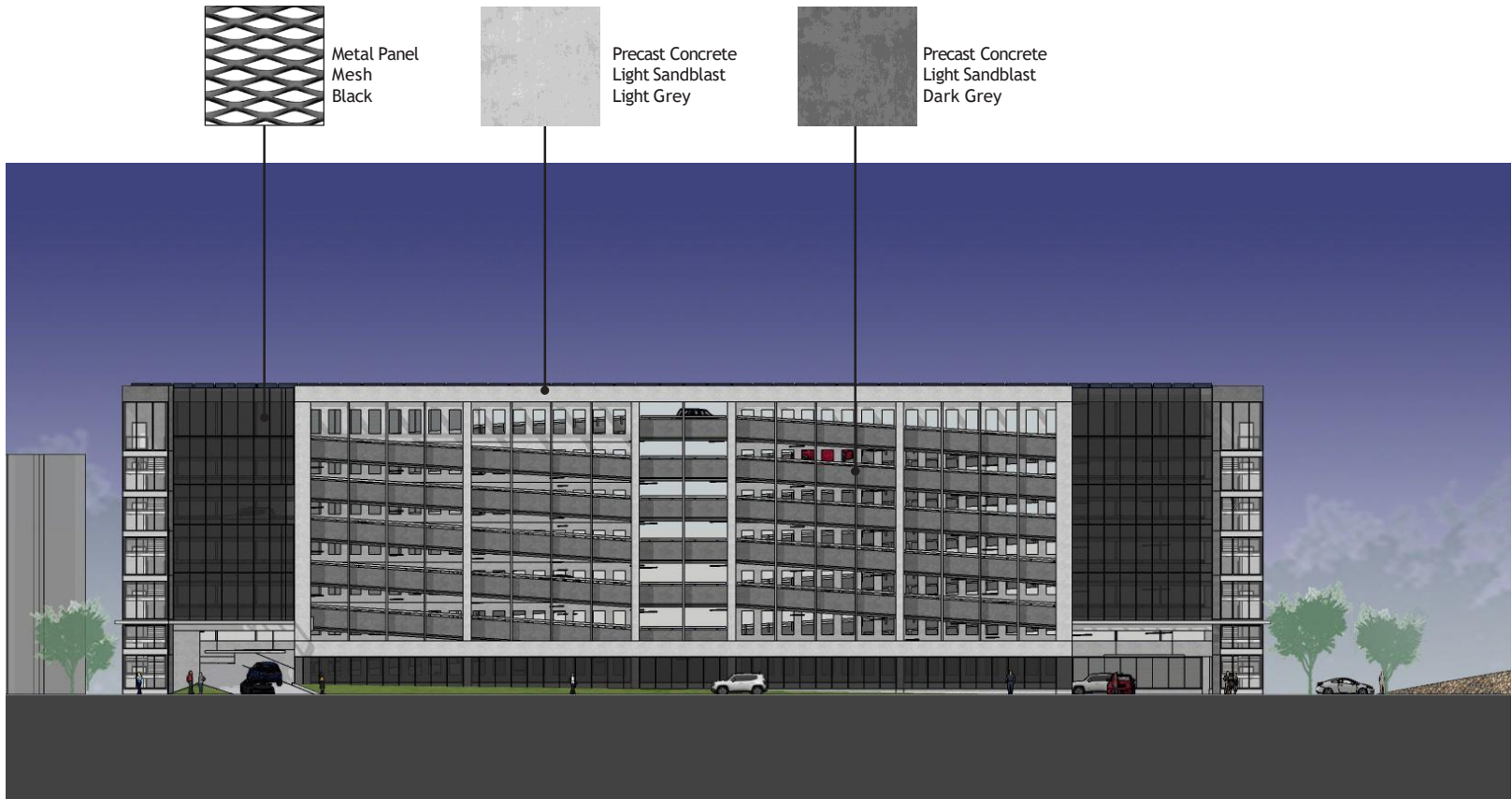
West Elevation

Pittsburgh Technology Center - Parking Garage
No. 3

Urban Redevelopment Authority of Pittsburgh

Indovina
Associates
Architects





Material Palette - Typical All Elevations

Pittsburgh Technology Center - Parking Garage No. 3

Urban Redevelopment Authority of Pittsburgh

Indovina
Associates
Architects





Contextual Rendering

Pittsburgh Technology Center - Parking Garage No. 3

Urban Redevelopment Authority of Pittsburgh

Indovina
Associates
Architects





Contextual Rendering

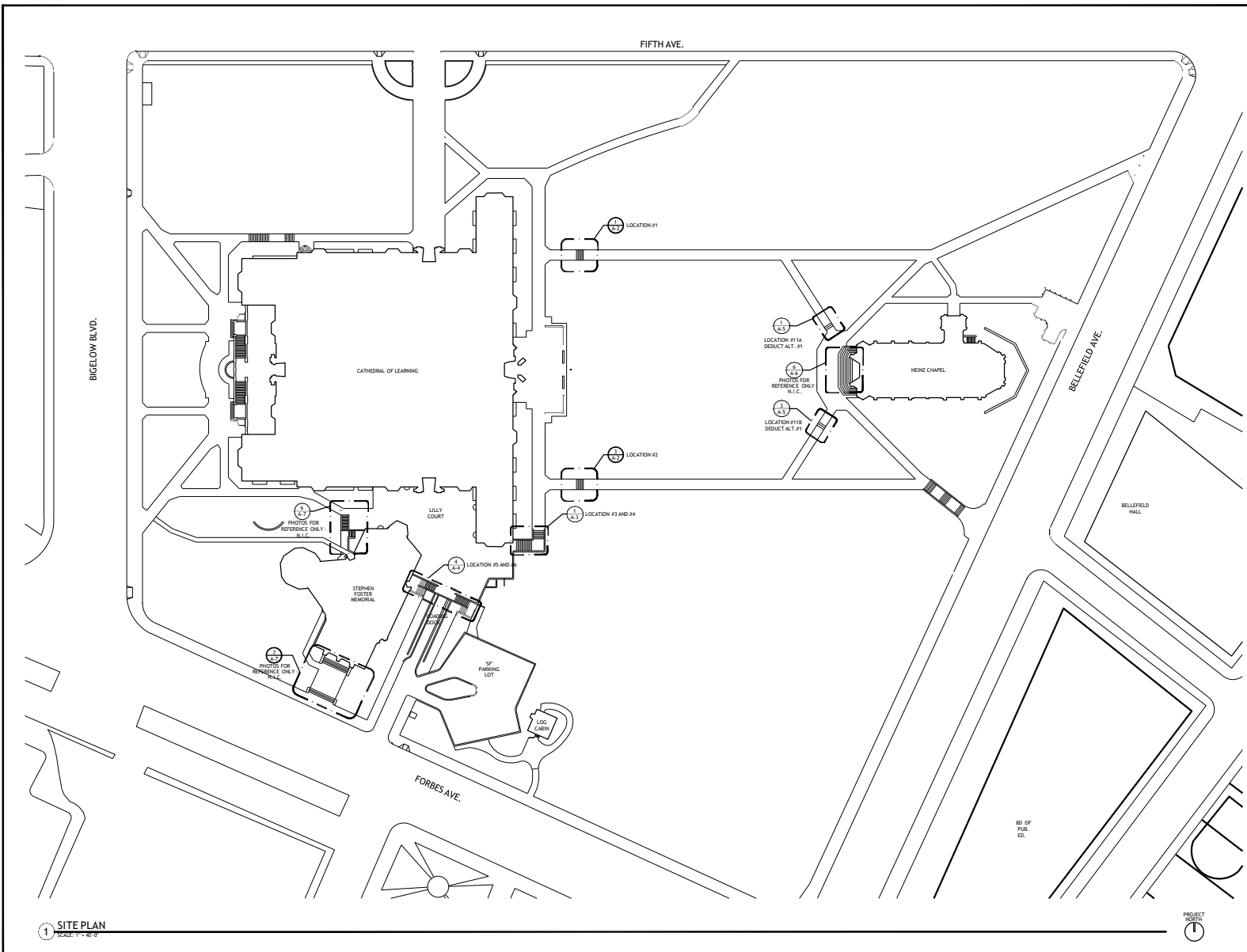
Pittsburgh Technology Center - Parking Garage No. 3

Urban Redevelopment Authority of Pittsburgh



Indovina
Associates
Architects



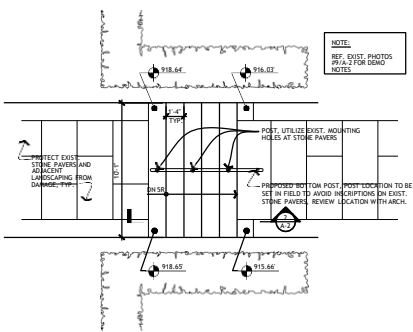
REVISIONS		
No.	Date	Description



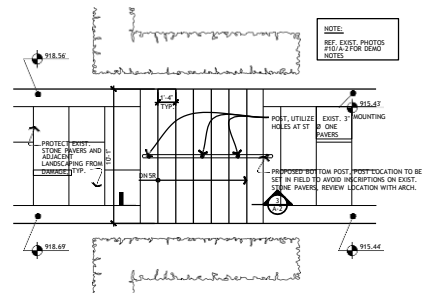
1 SITE PLAN
SCALE: 1"=40'

	
University of Pittsburgh Facilities Management	
	
Project Name CATHEDRAL OF LEARNING SITE WORK	Job No. Y6959
Drawing Description SITE PLAN	Issue Date 06/08/20
BID SET	
CAD File Name	Drawn By
Drawing Number	3

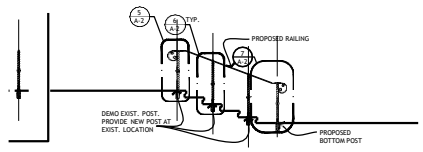
REVISIONS		
No.	Date	Description



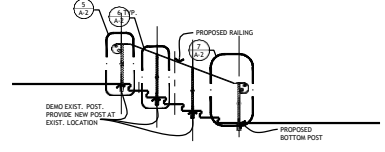
1 PLAN - LOCATION #1
SCALE: 1/4"=1'-0"



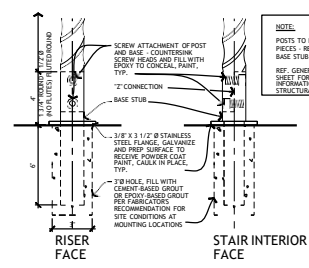
3 PLAN - LOCATION #2
SCALE: 1/4"=1'-0"



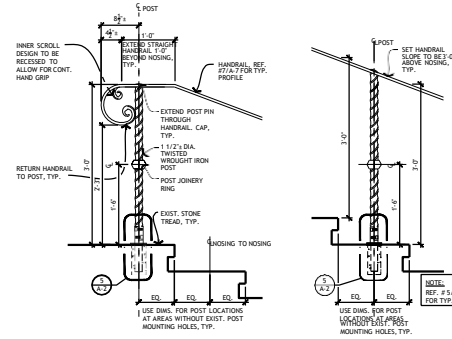
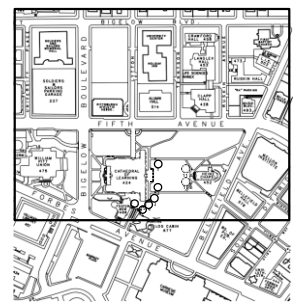
2 SECTION - LOCATION #1
SCALE: 1/4"=1'-0"



4 SECTION - LOCATION #2
SCALE: 1/4"=1'-0"



8 DETAIL - TYP. POST MOUNT



5 TOP POST ELEVATION DETAIL
SCALE: 1/4"=1'-0"

6 MIDSPAN POST ELEVATION DETAIL
SCALE: 1/4"=1'-0"

7 BOTTOM POST ELEVATION DETAIL
SCALE: 1/4"=1'-0"



9 PHOTOS - LOCATION #1 - EXISTING



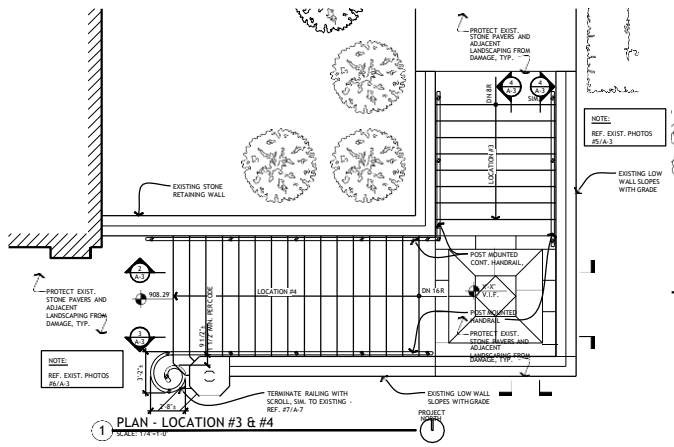
10 PHOTOS - LOCATION #2 - EXISTING



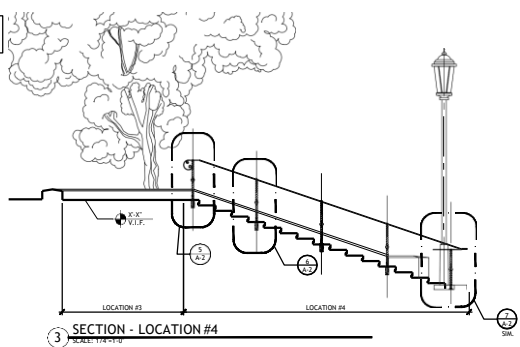
University of Pittsburgh
Facilities Management

<p>Project Name: CATHEDRAL OF LEARNING SITE WORK</p>		<p>Job No.: N6959</p>
<p>Issue Date: 06/08/20</p>		<p>Drawn By:</p>
<p>Design Description: LOCATION #1,#2 EXISTING PHOTOS, PROPOSED PLANS, ELEVATIONS, DETAILS BID SET</p>		<p>Scale: 3/4"=1'-0"</p>
<p>CAD File Name:</p>	<p>Drawn By:</p>	<p>Scale: 3/4"=1'-0"</p>
<p>Design Number:</p>	<p>Scale: 3/4"=1'-0"</p>	<p>Scale: 3/4"=1'-0"</p>

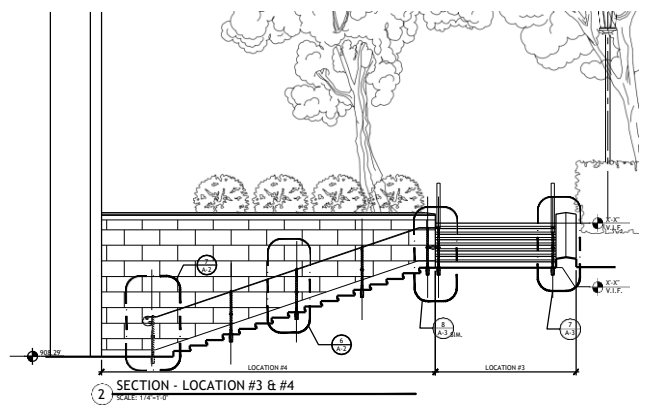
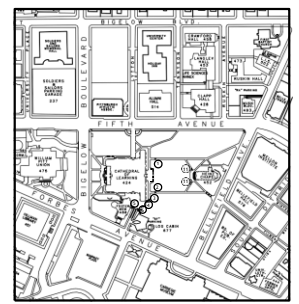
REVISIONS		
No.	Date	Description



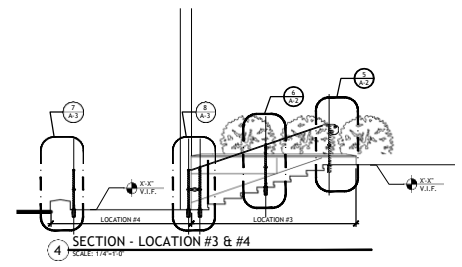
1 PLAN - LOCATION #3 & #4
SCALE: 1/4" = 1'-0"



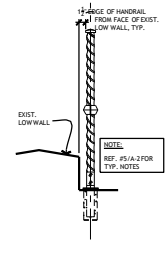
3 SECTION - LOCATION #4
SCALE: 1/4" = 1'-0"



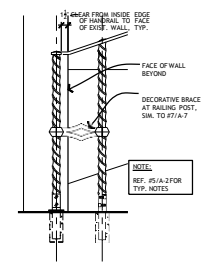
2 SECTION - LOCATION #3 & #4
SCALE: 1/4" = 1'-0"



4 SECTION - LOCATION #3 & #4
SCALE: 1/4" = 1'-0"



7 ELEVATION DETAIL
SCALE: 1/4" = 1'-0"



8 ELEVATION DETAIL
SCALE: 1/4" = 1'-0"



5 PHOTOS - LOCATION #3
SCALE: N.T.S.



6 PHOTOS - LOCATION #4
SCALE: N.T.S.





University of Pittsburgh
Facilities Management
Professor Stiene

Project Name:
**CATHEDRAL OF LEARNING
SITE WORK**

Project Description:
**LOCATION #3, #4 EXISTING PHOTOS,
PROPOSED PLANS, ELEVATIONS, DETAILS
BID SET**

CAD File Name

Drawing Number

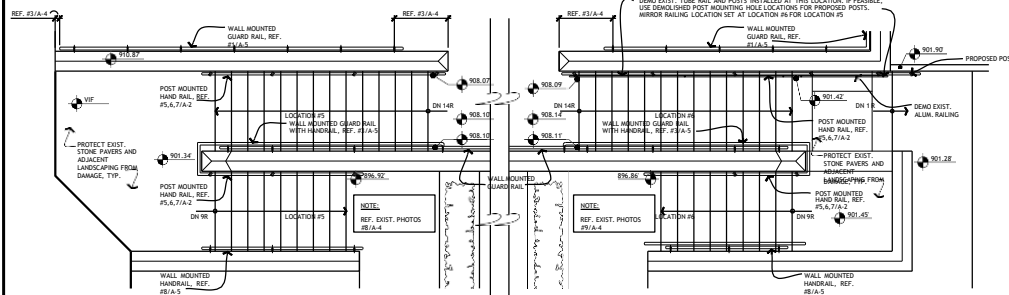
Job No.
N6959

Issue Date
06/08/20

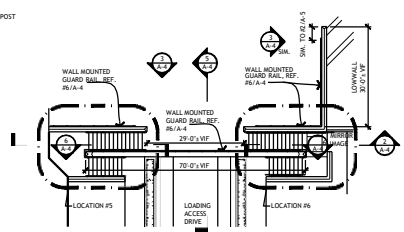
Drawn By

Est. Order
5

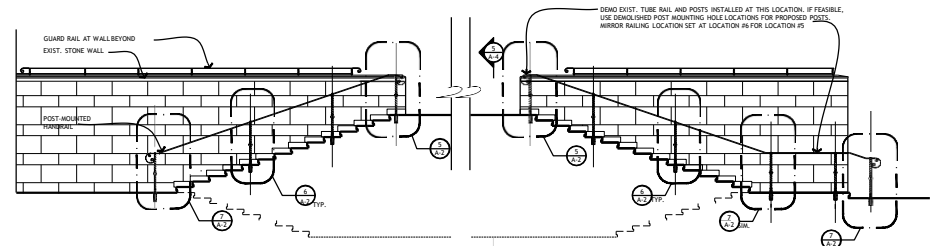
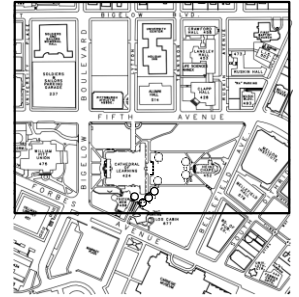
REVISIONS		
No.	Date	Description



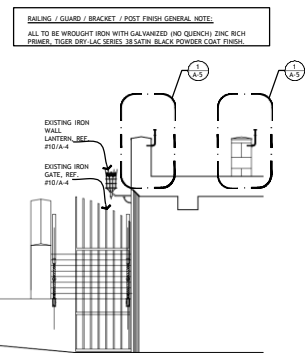
1 PLAN - LOCATION #5 & #6
SCALE: 1/4"=1'-0"



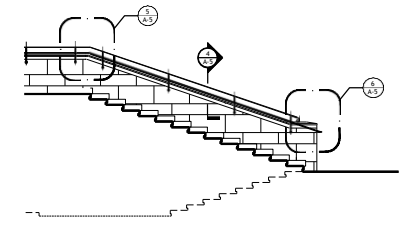
4 REFERENCE PLAN - LOCATION #5 & #6
SCALE: 1/8"=1'-0"



2 SECTION - LOCATION #5 & #6
SCALE: 1/4"=1'-0"

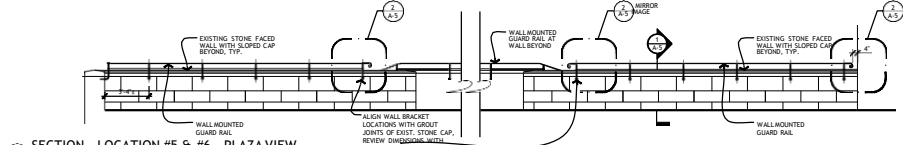


5 SECTION - LOCATION #5 & #6
SCALE: 1/4"=1'-0"

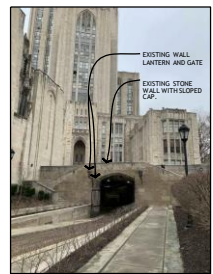


6 SECTION - LOCATION #5 & #6 - PROPOSED
SCALE: 1/4"=1'-0"

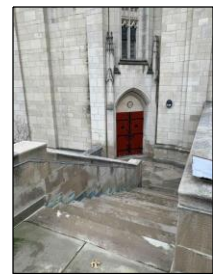
RAILING / GUARD / BRACKET / POST FINISH GENERAL NOTE:
ALL TO BE WROUGHT IRON WITH GALVANIZED (NO QUENCH) ZINC RICH PRIMER, TIGER DRY-LAC SERIES 35 SATIN BLACK POWDER COAT FINISH.



3 SECTION - LOCATION #5 & #6 - PLAZA VIEW
SCALE: 1/4"=1'-0"



8 PHOTOS - LOCATION #5
SCALE: N.T.S.



9 PHOTOS - LOCATION #6
SCALE: N.T.S.

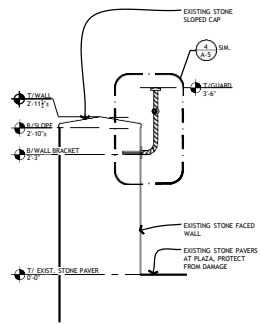


10 PHOTOS - LANTERN / GATE
SCALE: N.T.S.

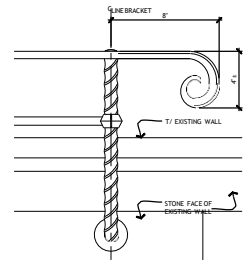
University of Pittsburgh
Facilities Management

Project Name: CATHEDRAL OF LEARNING SITE WORK	Job No.: N6959
Project Description: LOCATION #5, #6 EXISTING PHOTOS, PROPOSED PLANS, ELEVATIONS, DETAILS BID SET	Issue Date: 06/08/20
CAD File Name:	Drawn By:
Sheet Number:	Sheet Count: 6

REVISIONS		
No	By	Date

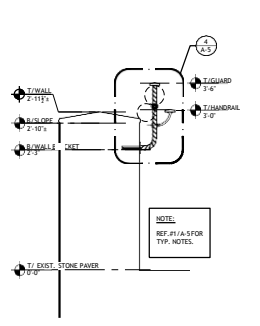
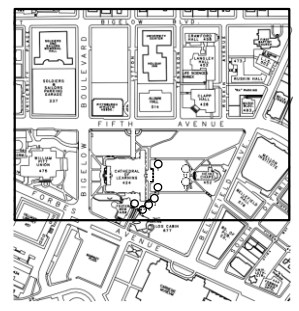


1 SECTION DETAIL
SCALE: 1/4"=1'-0"
WALL MOUNTED
42" GUARD ONLY

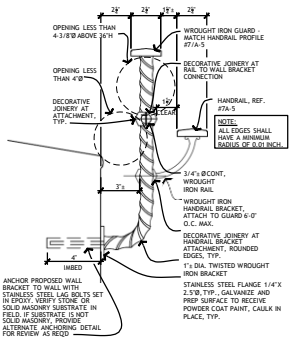


2 ELEVATION DETAIL
SCALE: 3/4"=1'-0"
WALL MOUNTED
42" GUARD ONLY

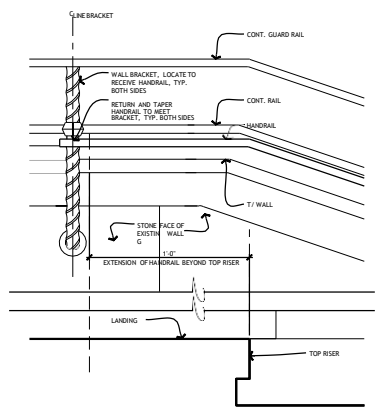
NOTE:
REF. GENERAL NOTES ON COVER SHEET FOR PRODUCT INFORMATION, FINISHES AND STRUCTURAL REQUIREMENTS.



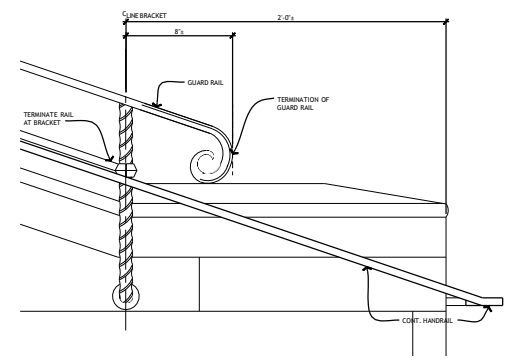
3 SECTION DETAIL
SCALE: 1/4"=1'-0"
WALL MOUNTED
42" GUARD WITH
36" HANDRAIL



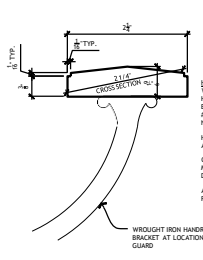
4 SECTION DETAIL
SCALE: 3/4"=1'-0"
CONT. WALL MOUNTED 42" GUARD
36" HANDRAIL TERMINATION AT TOP OF RISER



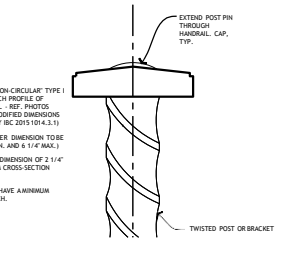
5 ELEVATION DETAIL
SCALE: 3/4"=1'-0"
CONT. WALL MOUNTED 42" GUARD
36" HANDRAIL TERMINATION AT TOP OF RISER



6 ELEVATION DETAIL
SCALE: 3/4"=1'-0"
WALL MOUNTED 42" GUARD TERMINATION
CONT. 36" HANDRAIL



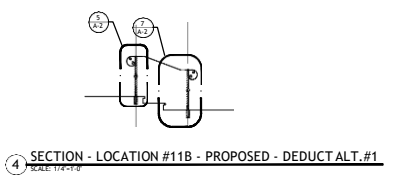
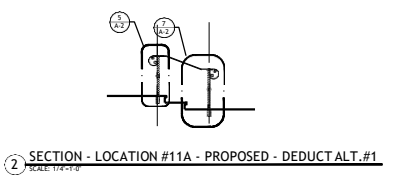
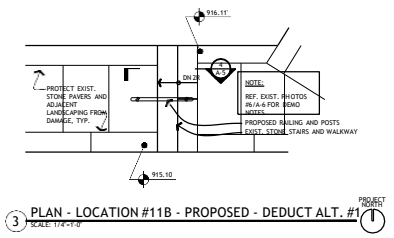
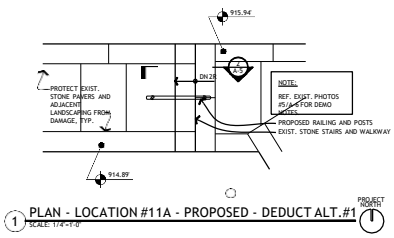
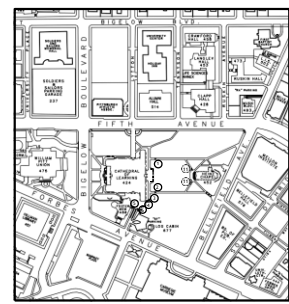
7 SECTION DETAIL
SCALE: 3/4"=1'-0"
TYP. HANDRAIL / GUARDRAIL PROFILE



8 SECTION DETAIL
SCALE: 1/4"=1'-0"
WALL MOUNTED HANDRAIL
(NO GUARD)

University of Pittsburgh Facilities Management Professional Seals	
Project Name: CATHEDRAL OF LEARNING SITE WORK	Job No.: N6959 Issue Date: 06/08/20
Drawing Description: LOCATION #5, #6 EXISTING PHOTOS, PROPOSED PLANS, ELEVATIONS, DETAILS BID SET	
CAD File Name:	Drawn By:
Quantity Number:	Est. Order #:

REVISIONS		
No.	Date	Description



NOTE:
PROVIDE DEDUCT ALTERNATE #1
PRICING FOR LOCATIONS SHOWN
ON THIS SHEET.



University of Pittsburgh
Facilities Management



5 PHOTOS - LOCATION #11A - EXISTING



6 PHOTOS - LOCATION #11B - EXISTING

Project Name	Job No.
CATHEDRAL OF LEARNING SITE WORK	N6959
Issue Date	Issue Date
06/08/20	06/08/20
Drawing Description	
LOCATION #11, #12 EXISTING PHOTOS, PROPOSED PLANS, ELEVATIONS, DETAILS BID SET	
CAD File Name	Drawn By
Drawing Number	Sheet Order
	6 of 6

University of Pittsburgh Resilience Framework

Planning for a Safer Return to Our Campuses

A Safer Return to Campus

- Being led by the COVID-19 Medical Response Office
- Students will return in a phased arrival
- All students must shelter-in-place for a 14-day period
- Residence Life will work with our health experts to plan safe socialization activities during this time
- Students who test positive will be moved to supported isolation

Campus Life & Classes

- Flex@Pitt is a hybrid model that integrates in-person and remote learning and allows us to move between the two
- Students in Pitt Partner Hotels will have the same support they would in one of our traditional residence halls, including education about being a good neighbor
- Safe socialization opportunities and activities will be provided throughout the term based on the current operational posture

For Our Community

- Access to our buildings will be very limited—but our partnership will not be
- Looking at new ways to engage
- Building a campaign to promote healthy and safe behaviors
- Our Campus Community Compact helps protect all of our communities
- We'll be responsive to changing conditions

THANK YOU!

- Next Oakland-Wide Community Meeting is Tuesday, August 25 at 6pm via Zoom and Facebook Live
- Follow us on social media
 - www.facebook.com/opdc.org
 - www.instagram.com/oaklandplanning
 - www.twitter.com/oaklandplanning
- General inquiries – questions@opdc.org