



Oakland Planning
and Development
Corporation

Welcome

Oakwatch/Let's Talk Agenda

Agenda Item	Speaker(s)	Time
Welcome/Overview of Meeting/Introduction of Topic	Andrea	6:00 – 6:05
Oakwatch Updates <ul style="list-style-type: none">• Rental Registration• Residential Parking Permit Program Updates• Air Quality Update• Property Watch List• Updates from our Enforcement Partners	Councilman Bruce Kraus Director Andrew Dash Christina Graziano Liz Gray and Elena Zaitsoff Enforcement Partners	6:05 – 6:40
Let's Talk... Trees <ul style="list-style-type: none">• TreeVitalize and Oakland's Tree Canopy: Past, Present and Future	Andrea, Rebecca Kiernan	6:40 – 7:15
Closing <ul style="list-style-type: none">• Gratitude• Direct attention to November meetings and upcoming events	Andrea	7:15 – 7:30

Oakwatch resources

- Visit www.opdc.org/oakwatch-resources for copies of tonight's flyers and resources from our enforcement partners, elected officials, and the University of Pittsburgh.

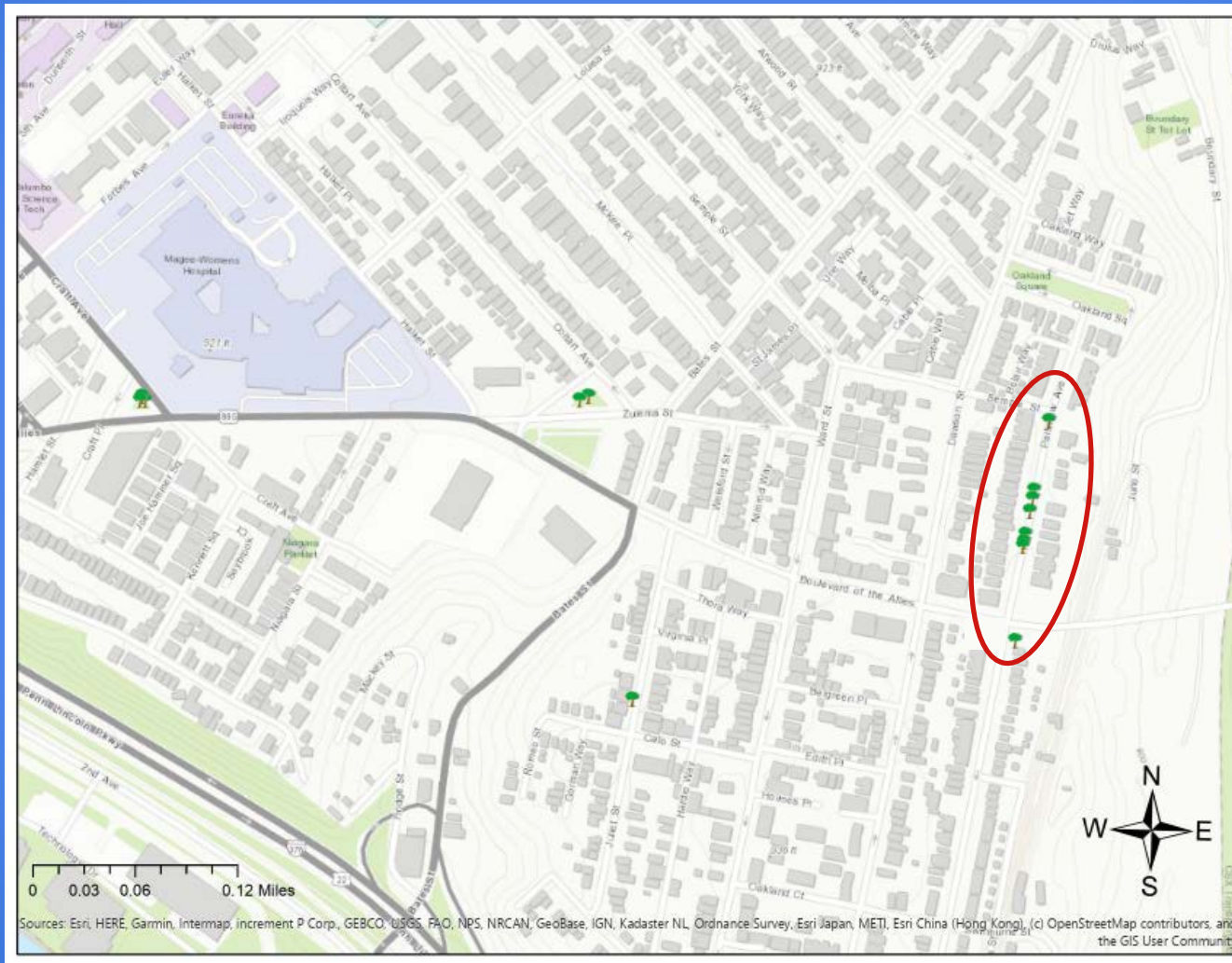


Let's Talk - Trees

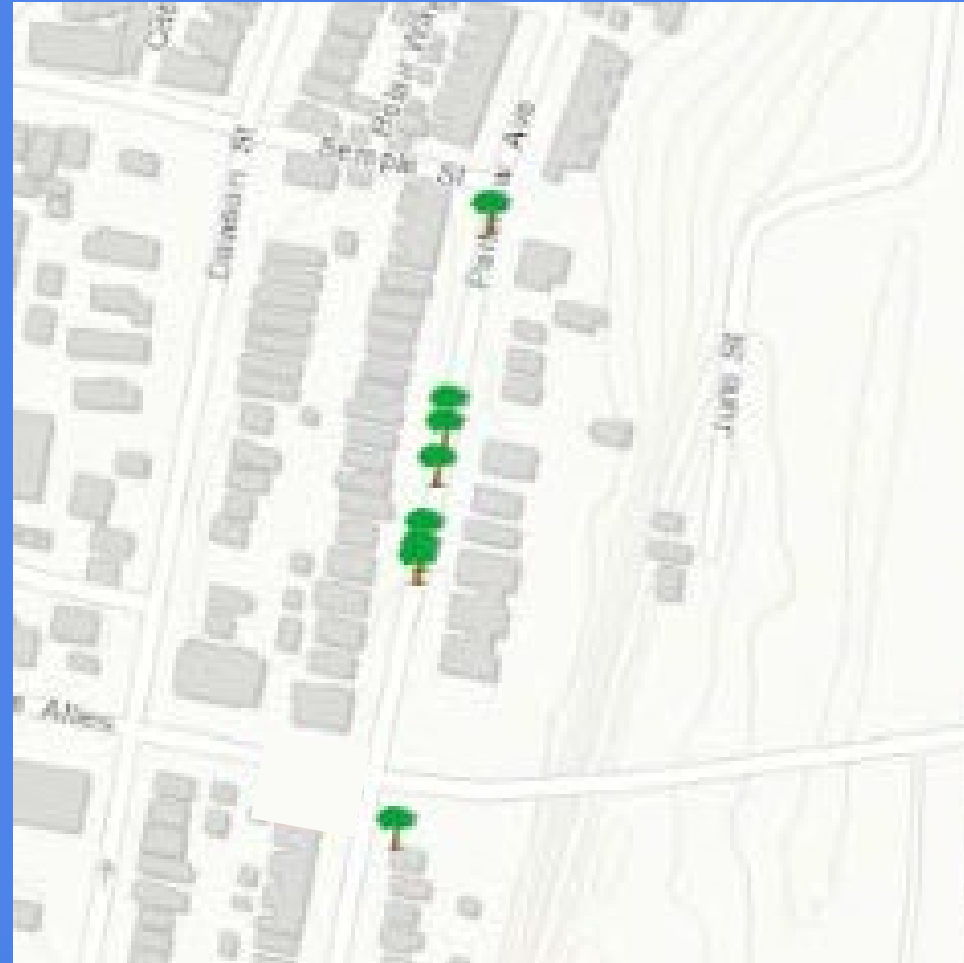
Let's Talk

- **Featured Speaker:**
 - Rebeca Kiernan, Principal Resilience Planner, Department of City Planning

TreeVitalize: Upcoming Planting



TreeVitalize: Upcoming Planting





Tree Canopy

- Trees Owned and Maintained by City (1,500 trees)

CANOPY CHANGE (2010–2015)

- No Change (180 acres)
- Gain (+2.4 acres)
- Loss (-34 acres)

Total canopy is estimated at 183 acres. The majority of tree canopy in Oakland—77% of the total—is found on steep slopes at the edges of the neighborhood.

Source: LIDAR Imagery of Tree Canopy (2010–2015) Trees, City of Pittsburgh.

Oakland Temperature Map—September 2015



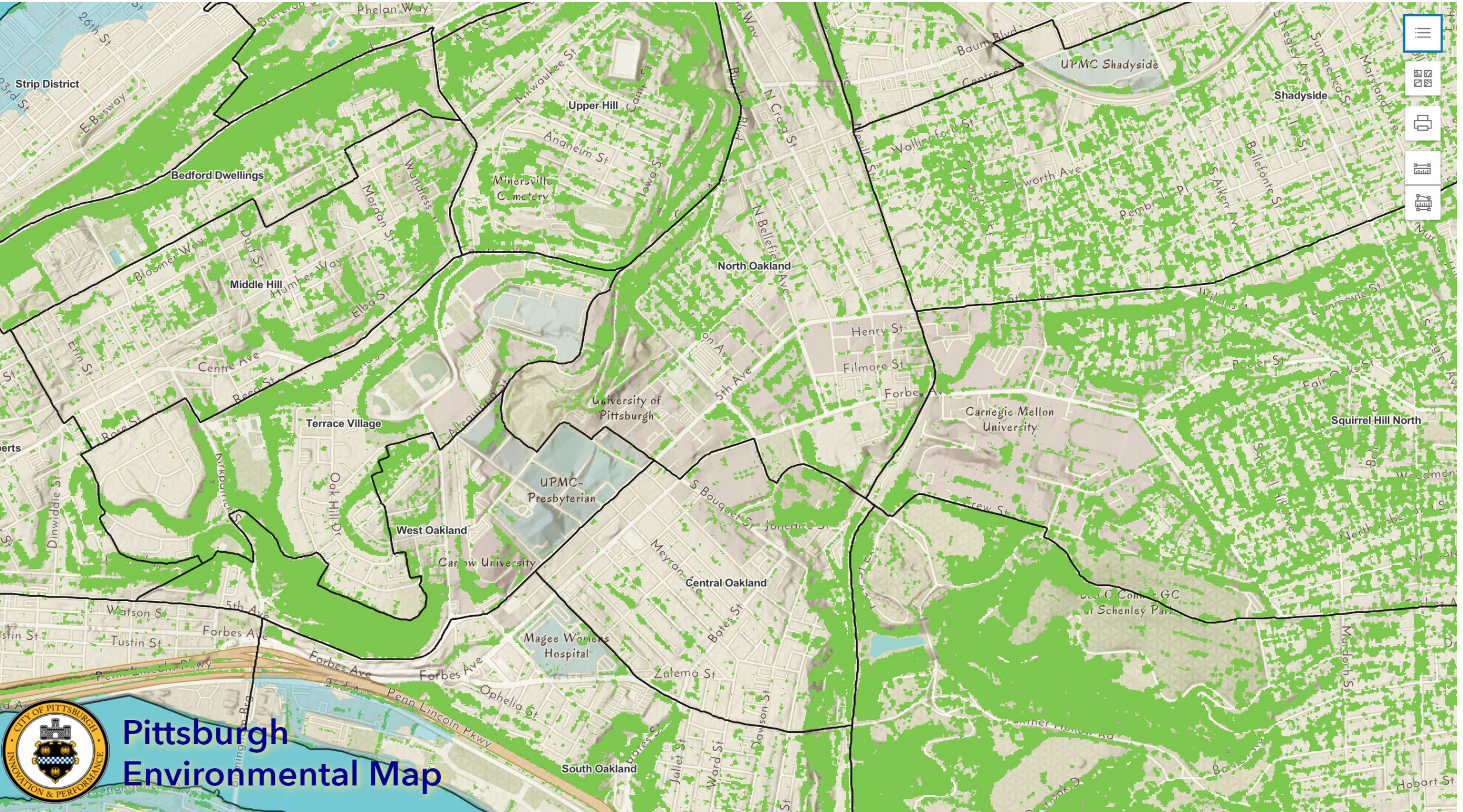
Source: Tree Pittsburgh

TreeVitalize Pittsburgh

- TreeVitalize Pittsburgh
 - Joint project of:
 - Allegheny County Parks
 - The City of Pittsburgh
 - Tree Pittsburgh
 - PA Department of Conservation and Natural Resources
 - Western Pennsylvania Conservancy
 - Supports street tree plantings in the City of Pittsburgh by providing expertise, trees, supplies, and planting event coordination for neighborhood groups
 - In accordance with the City of Pittsburgh's 10-year Street Tree Management Plan
- Get in touch with us if you're interested in a tree and you want to learn more
 - Reach out to Maura McCampbell at mmcampbell@opdc.org or at 412.621.7863 ext. 111

Trees in the





Pittsburgh Environmental Map

Tree canopy in Oakland

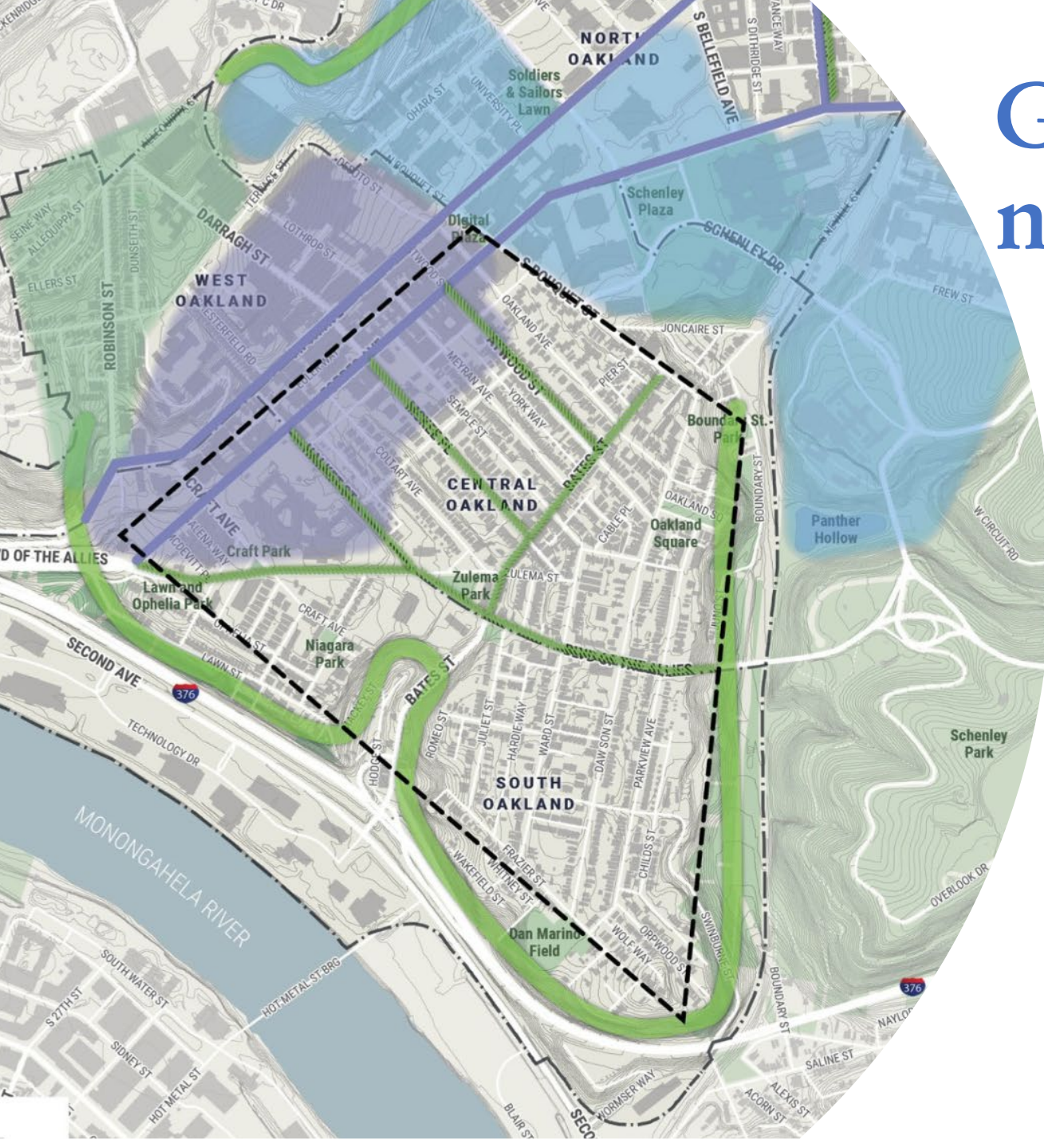
- Trees play a vital roles in 3 topics of the neighborhood plan:
- Green street network
- Hillsides
- Yard debris and compost programs



Green street network:

- For wildlife
- Beautification and livability
- Stormwater management
- Heat island reduction

Lawn St Greenway,
Atwood, McKee, Halket, Bates,
Blvd of the Allies



Hillside management

Manage the hillside sustainably to prevent landslide and erosion:

- Tree planting
- Oakland based goat program
- Evaluate a buy-out opportunity for the most vulnerable houses
- Amend Zoning Code to put new limits on redevelopment on areas that are steeply sloped and landslide prone.
- Add restoration requirements for hillside disturbances.

Yard debris and compost

- Support and expand compost efforts:
- Pilot more regular yard waste pick up or allow for composting start up business opportunities to keep catch basins clear and yard waste out of landfills

Pittsburgh Shade Tree Commission



Pittsburgh
**SHADE TREE
COMMISSION**

Meetings are open for public comment and can be viewed on the City's Youtube channel.

We meet every third Thursday of the month at 9am

<https://pittsburghpa.gov/shade-tree/about-shade-tree>

Significant Tree Registry

Tree Pittsburgh will be responsible for developing, promoting and managing the registry. Residents will be able to nominate significant trees based on several traits such as:

- Size
- Species
- Age
- Historic significance
- Ecological value
- Visibility
- Health
- Space
- Exceptionality
- Collection
- Grove



Equitable Street Tree Investment Plan

The Pittsburgh Shade Tree Commission's Equitable Street Tree Investment Strategy will identify low income/low canopy neighborhoods, support education and increased awareness on the value of the urban forest, develop tree care infrastructure, plant trees, and adopt and fund maintenance schedules for trees in these neighborhoods in order to improve the quality of life for current and future residents.

10 neighborhoods to be selected annually and prioritized for backlogged 311s, increasing tree canopy and filling empty tree pits, increase community support for and stewardship of trees, build relationships with partner orgs, explore sidewalk repair support, etc.



Greenways Partnership Program



2021 Pilot: Hazelwood Greenway

Supported by a \$50k grant from Trust for Public Land

Project Partners:

- Community Based Organization: Hazelwood Initiative
- Landforce
- Allegheny Goatscape
- Tree Pittsburgh
- Chatham University Falk School of Sustainability



2022-2023 Greenways Program

Supported by a \$430k grant from National Recreation and Parks Association

Will hire a full time Greenways Coordinator at the ONEPGH Fund

Focus on equity, resilience and access





Thank You!

WE APPRECIATE YOUR TIME

OPDC Upcoming Meetings

November 29, 6:00 p.m. via Zoom

**Development Activities Meeting (DAM): Zone Change Proposal – Oakland Public Realm
Subdistrict E**

Zoom Meeting ID: 827 5841 9955

Passcode: 567135

Join by phone: 646.558.8656

November 30, 6:00 p.m. via Zoom

**Oakland-Wide Community Meeting: UPMC Presbyterian Bed Tower Development Activities
Meeting (DAM)**

Zoom Meeting ID: 872 5379 1820

Passcode: 574373

Join by phone: 646.558.8656

OPDC: Looking Ahead

- Do you or a neighbor need help shoveling snow this winter? Get in touch with OPDC at snow@opdc.org or call 412.621.7863 ext. 119

THANK YOU!

- Event calendar – www.opdc.org/events
- Sign up for the e-news and meeting notices at www.opdc.org/contact-us
- General inquiries – questions@opdc.org
- Donate – www.opdc.org/donate
- Social Media

facebook.com/opdc.org

instagram.com/oaklandplanning

twitter.com/oaklandplanning