

OAKLAND-WIDE COMMUNITY MEETING

MAY 25, 2021

Jobs & Financial
Coaching



Youth



Community
Land Trust



Neighborhood
Quality



Affordable
Housing



OPDC

Oakland Planning
and Development
Corporation

AGENDA

- OPDC and community updates and announcements.
- **The University of Pittsburgh**
 - Discussion of Pitt's campus-wide stormwater management and reuse plan.
 - Historic preservation and early re-development plan for 3441 – 3443 Forbes Avenue (Croatian Fraternal Union building)
- **Pittsburgh Water and Sewer Authority**
 - PWSA's PGH20Cares team will share updates to their customer assistance programs.

HOMEOWNER PROGRAMS, DAY OF GIVING, FOOD VOLUNTEERS

- OPDC's **Community Land Trust Aging in Place** program provides eligible Oakland homeowners 55+ with up to \$22,500 for home repairs. Learn more at www.opdc.org/clt and contact Malcolm Carrington at mcarrington@opdc.org or 412.621.7863 ext. 123.
- OPDC is the administrator for Oakland residents to apply for the URA's **Homeowner Assistance Programs**; open now through June 24 on a first-come, first-serve basis. Contact Malcolm Carrington at mcarrington@opdc.org or 412.621.7863 ext. 123.
- **Save the date – Tuesday, June 29.** Support OPDC on June 29 when we host an online Day of Giving to help raise funds for the Oakland Community Land Trust. Or make an early donation at www.opdc.org/donate.
- We're looking for **volunteers** to help with food distribution at the Frazier Field House. Shifts are 1.5 to 3 hours long, Tuesdays and Thursdays in June. Visit bit.ly/foodvols21 for more information or to sign up.

OAKLAND PLAN UPDATES, CLUTTER FOR A CAUSE

- The **Oakland Plan** project team invites the public to a virtual **open house** tomorrow at 5:00 p.m. to learn more about results from the previous Boulevard of the Allies/Zulema St. and Forbes Ave./Meyran Ave. workshops. Register at <https://engage.pittsburghpa.gov/oakland/workshops>
- Drafts of the Oakland Plan's goals and vision statement are available for review at <https://engage.pittsburghpa.gov/oakland>
 - Leave your feedback on the vision statement at <https://engage.pittsburghpa.gov/oakland/vision-workshop>
- The next **Clutter for a Cause** event is Tuesday, June 1 from 9:00 a.m. – 1:00 p.m. All are welcome to donate gently used household items. More details at bit.ly/opdcclutter2021

Storm Water Master Plan

Storm Water Re-Use

Oakland Wide Community Meeting May 25, 2021

Hillside Today



Opportunities

Human engagement with the landscape

Expand usable outdoor space

Enhance ADA accessibility

Achieve sustainability goals and economic benefits from active stormwater reuse

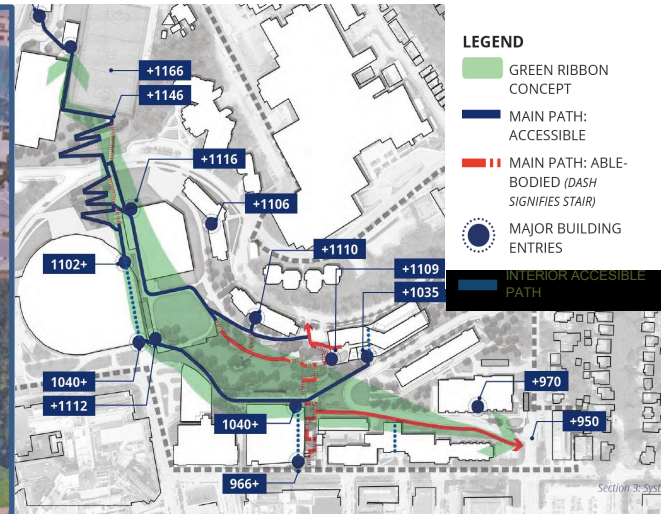
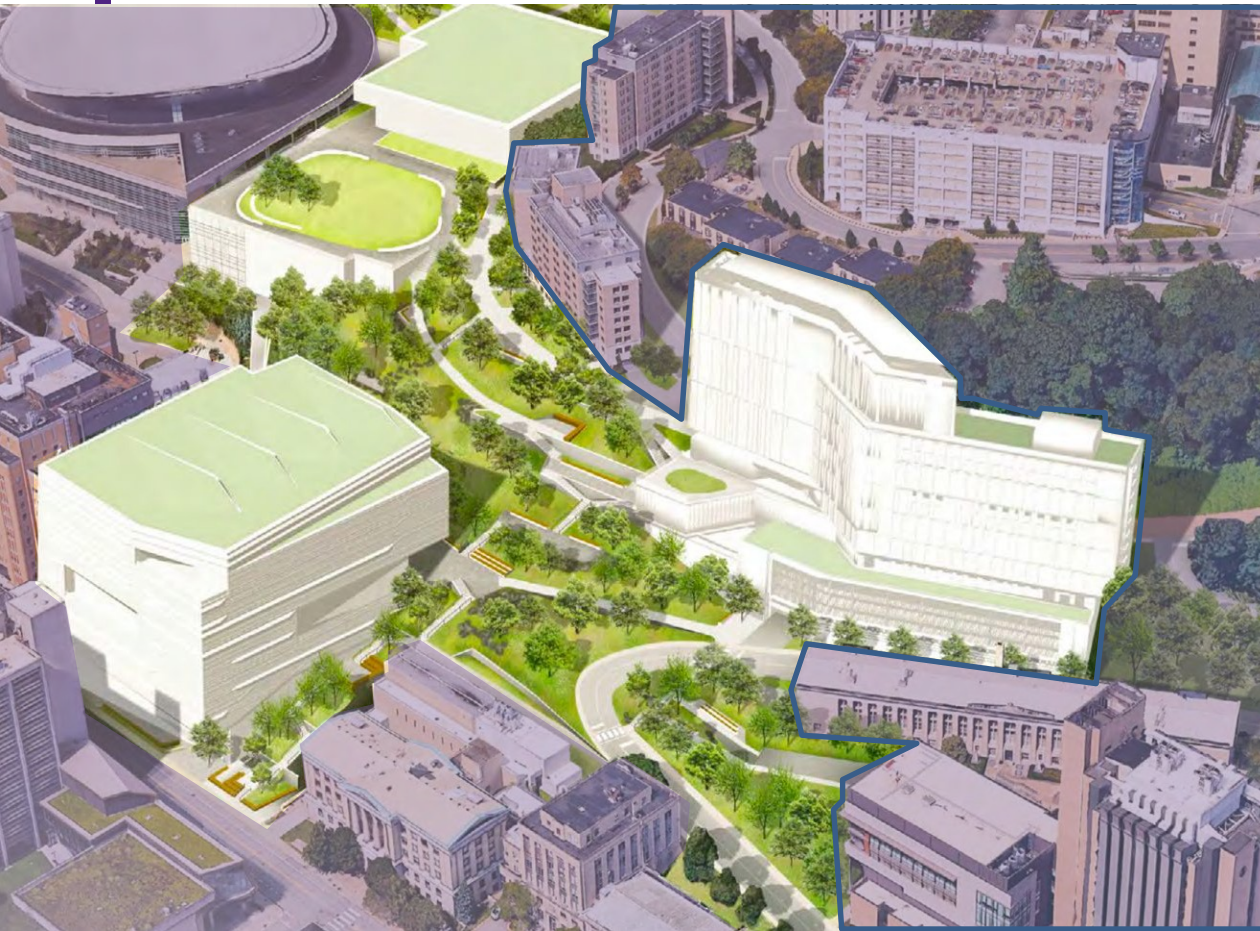
Improve stability of hillside;

sustainable re-forestation 3

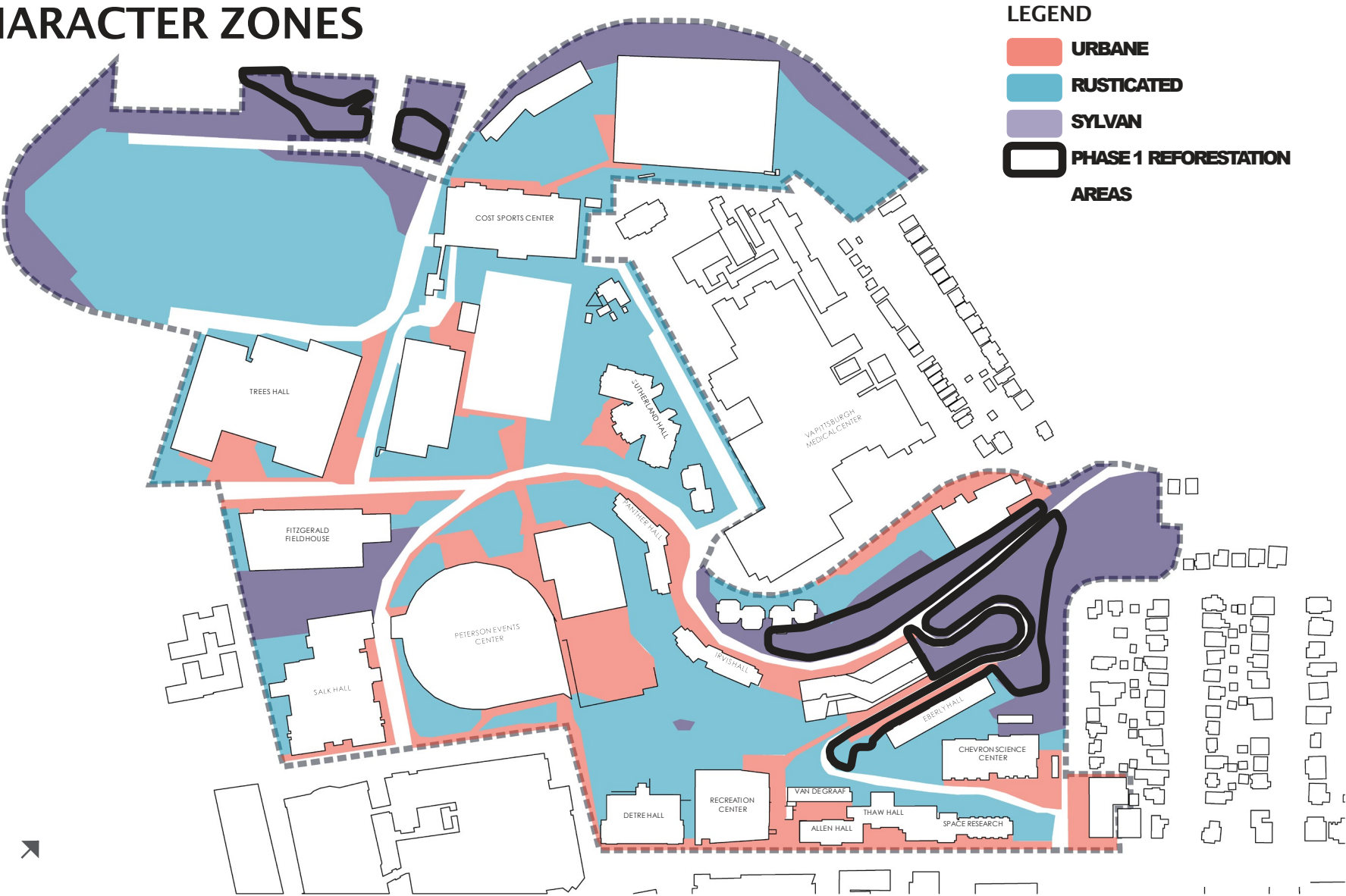
Improve safety with dedicated pedestrian and vehicle pathways

Improve campus appearance

Hillside Transformed



CHARACTER ZONES



CHARACTER ZONES: URBANE



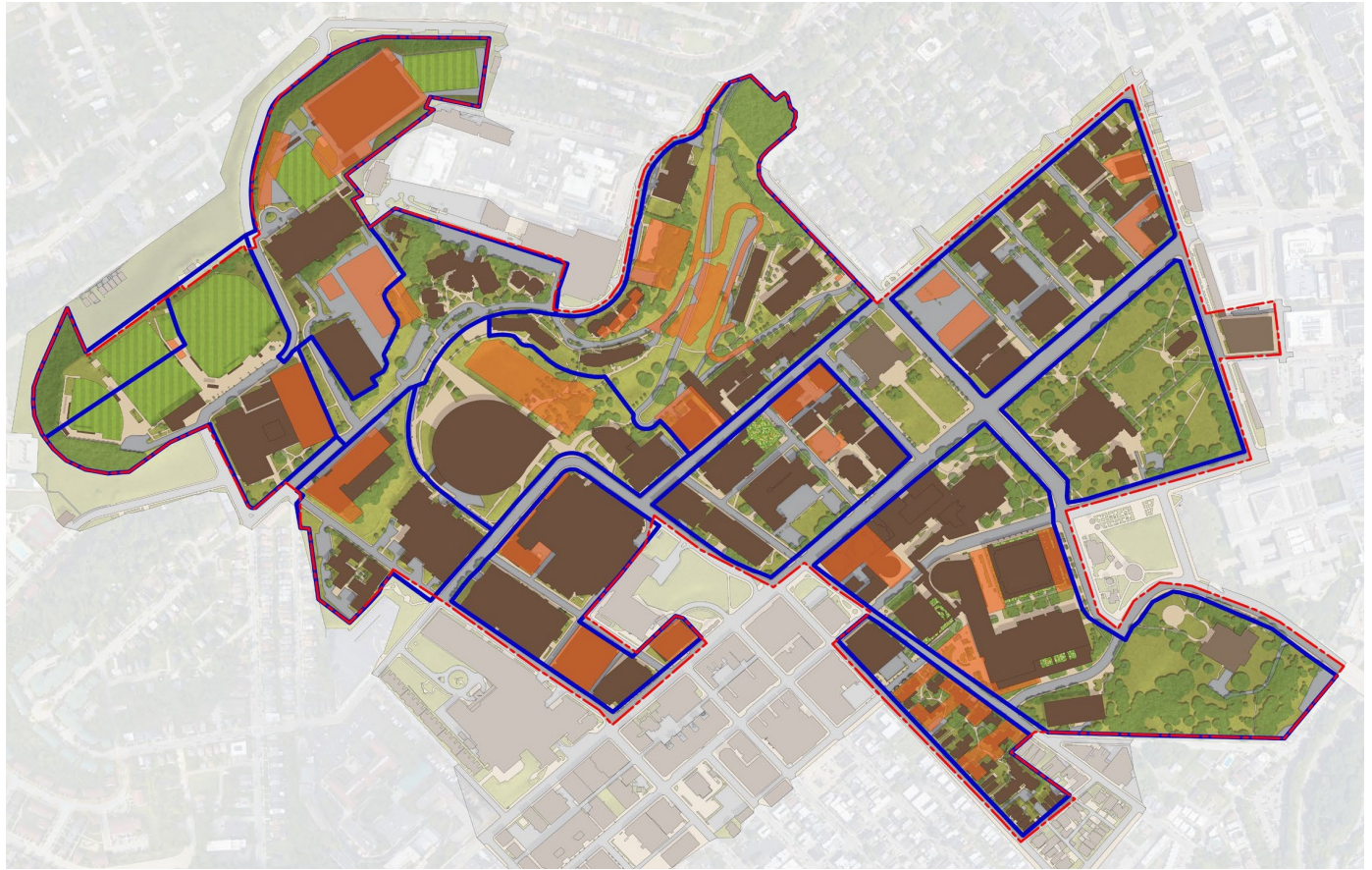
CHARACTER ZONES: RUSTICATED



CHARACTER ZONES: SYLVAN



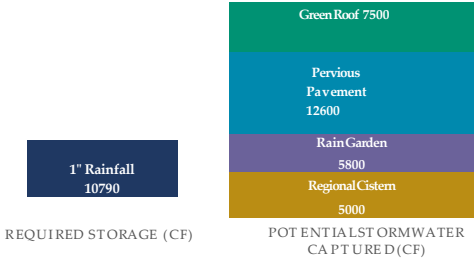
Stormwater Master Plan





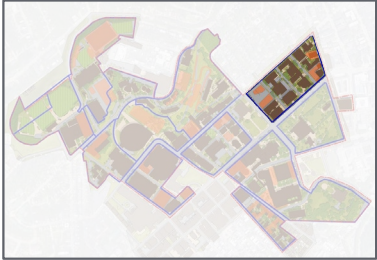
STORMWATER REQUIRED STORAGE VS. BMP STORAGE CAPACITY¹

CITY OF PITTSBURGH STORMWATER MANAGEMENT FEE REDUCTION⁴



PROJECT IDENTIFIER	PROJECT DESCRIPTION
2A	INFORMATION SCIENCES REDEVELOPMENT
2B	RA LOT SITE
9A	ONE BIGELOW

DISTRICT J



¹Based on coverage condition only. Square feet area and individual BMPs are not necessarily cumulative.
²Underground stormwater detention is shown for space allocation purposes only.
³Street trees only provide credit towards NPDES BMP credits.
⁴Based on anticipated code revision per City of Philadelphia Stormwater Ordinance

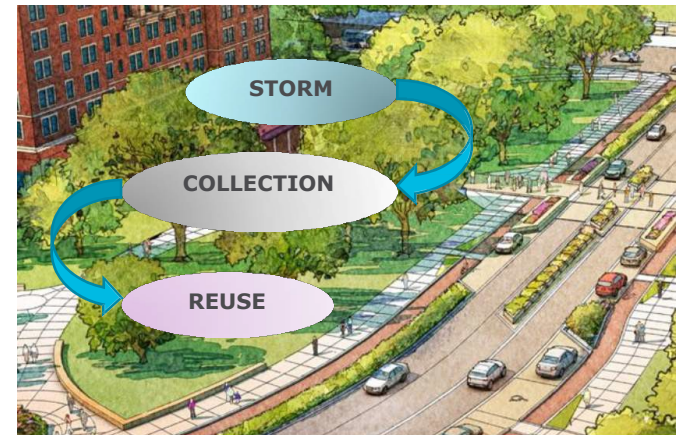
LOCAL COMMUNITY ASSET



Integrated into
existing neighborhood



Research, learning,
and education



*Proposed Improvements on Bigelow Boulevard
Image Source: University of Pittsburgh, Campus Master Plan 2019*

Improved stormwater
management at
campus-wide level

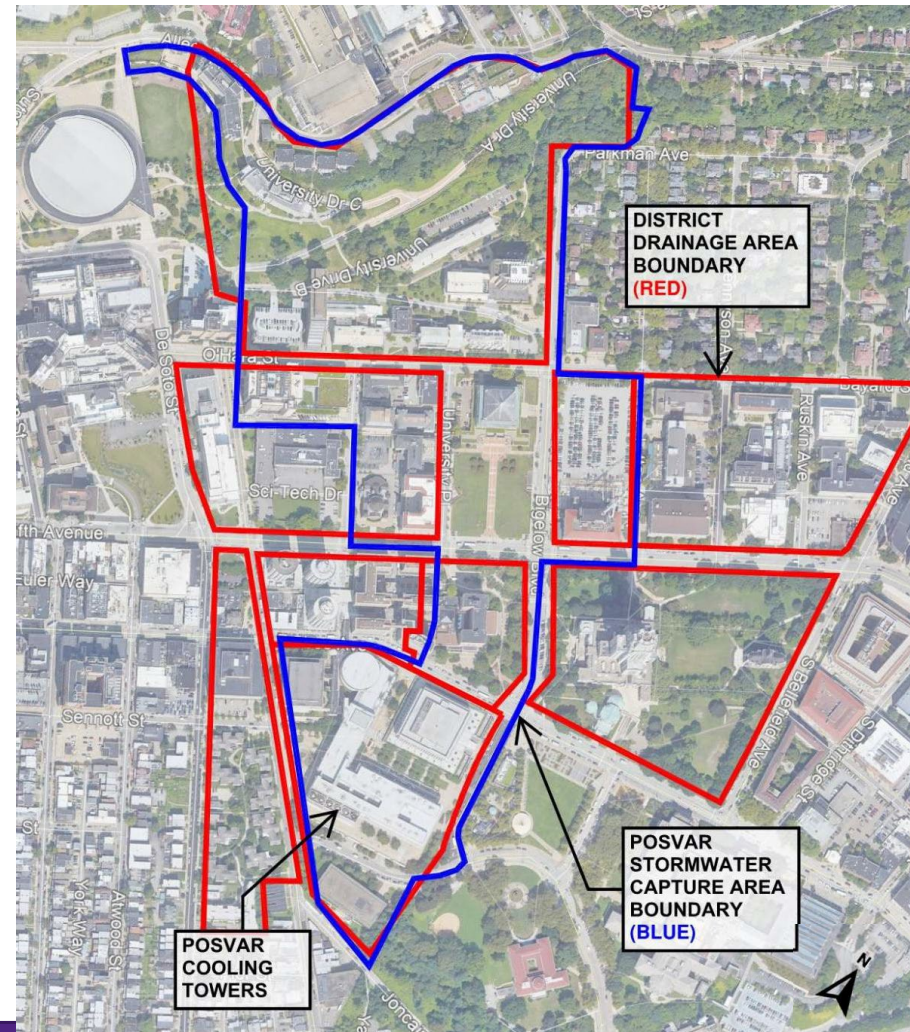
POSVAR STORMWATER REUSE PROJECT

- **OBJECTIVE**

Provide volume control and obtain stormwater credit by stormwater collection and reuse at the Posvar Cooling Towers.

- **APPROACH**

1. Identify areas that can be captured
2. Estimate Runoff Volume
3. Conceptual Collection and Conveyance
4. Posvar Storage Site



WHY STORMWATER REUSE?



Water Conservation

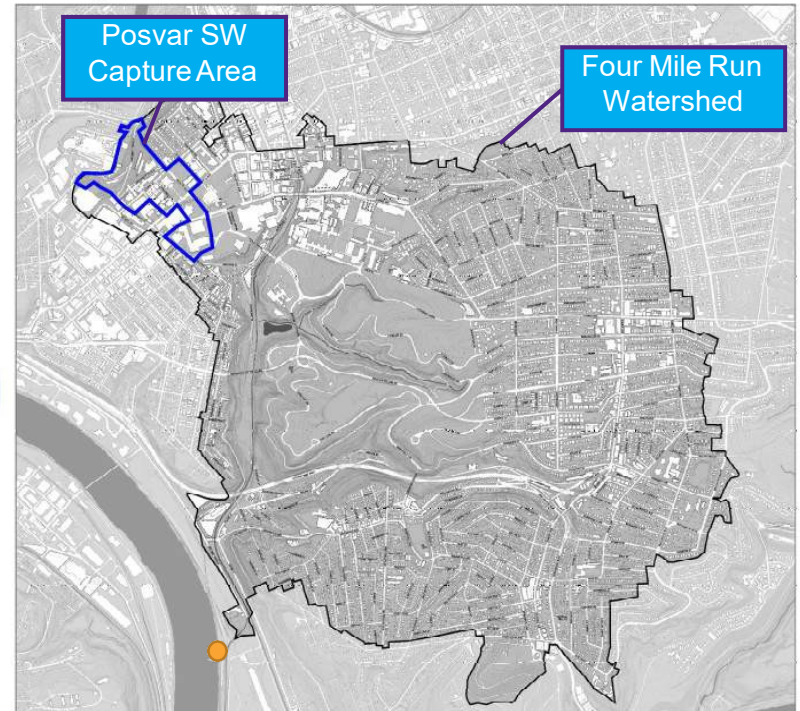
*Reduces
water use
and SW
Runoff
by at least
6.9 million
gallons per
year**



Four Mile Run Stormwater Improvement Project

PGH₂O Pittsburgh Water & Sewer Authority

4 Impervious Surfaces Roads, Buildings, and Parking Lots



Stormwater Runoff Reduction

Image Source: <http://4mr.org/background/map-room/>

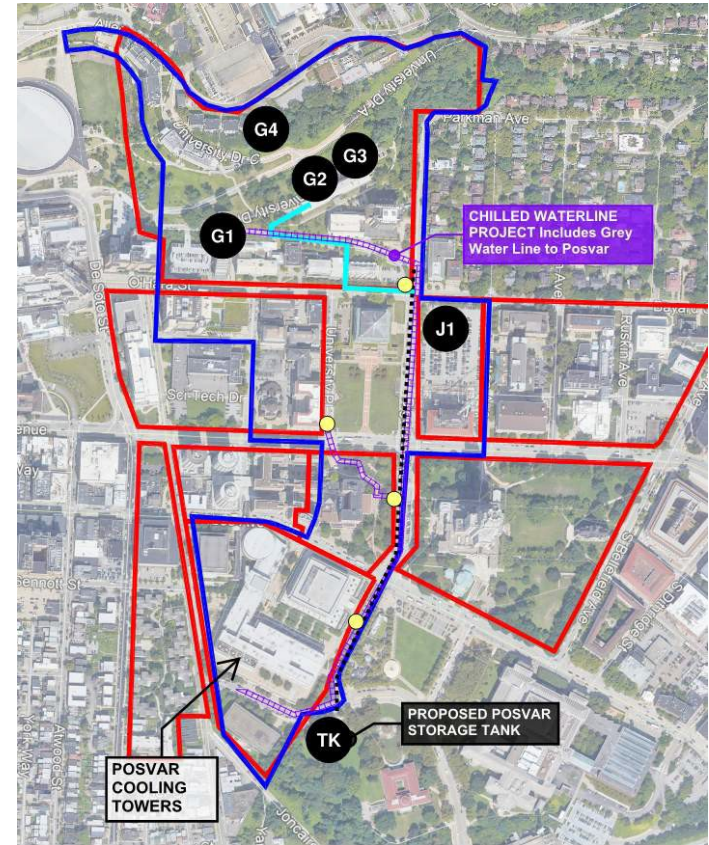
PRECIPITATION EVENTS

Precipitation Event	Inches	# occurrences / year
Avg Precipitation per Event	0.7	50
1" Storm (Meets Code Requirement)	1.0	8

Data Source: NOAA Climate Data Dailies, STAUSW00014762
Pittsburgh Allegheny Co Airport, 2014-2019

CONCEPTUAL COLLECTION AND CONVEYANCE

- Collect and Store of 1" Runoff volume at District G and J Projects
- Collect and convey from remaining districts
- Gravity flow through new "grey" waterline to proposed Posvar Storage Site
- Buried Detention System sized for Maximum Average Daily Demand (210,000 gallon)
- Inlet debris at collection sites
- Divert flows greater than the 1" rainfall event to storm or combined sewer lines

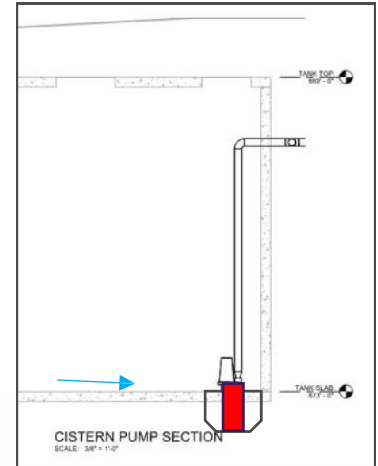
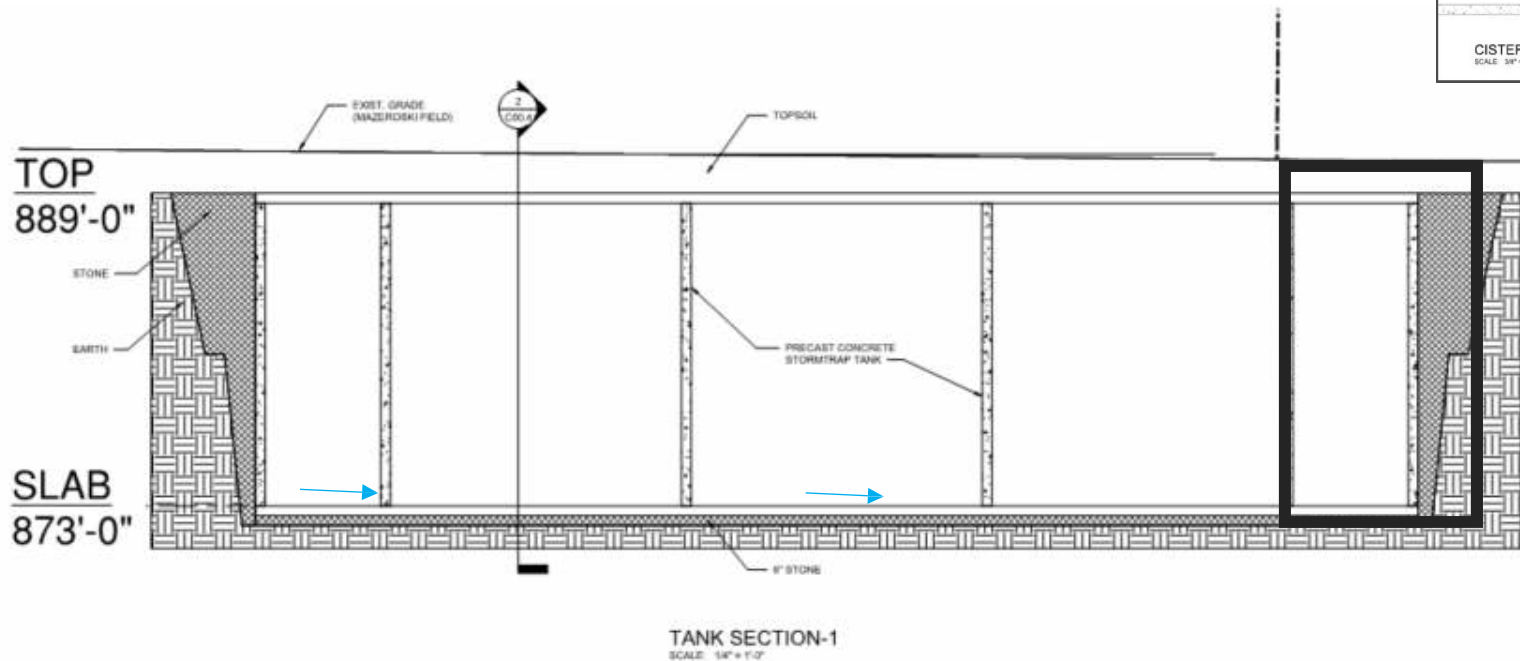


POSVAR STORAGE TANK CONCEPT, 210,000 Gallons



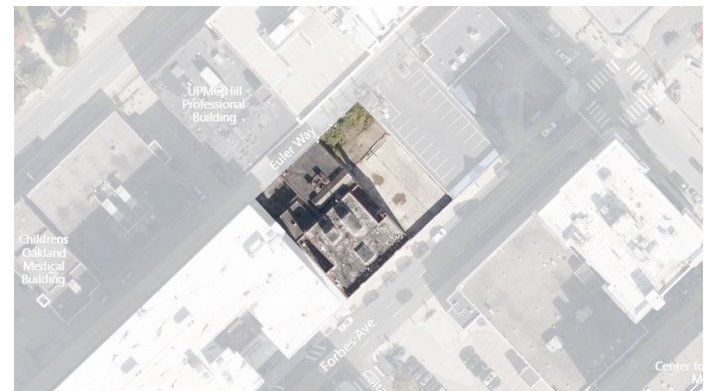
POSVAR STORAGE SECTION

- Foundation Design Considerations
- Provide tank draining controls via pump
- Tank underdrain



University of Pittsburgh

Questions About Stormwater



3441 Forbes Avenue Building



Site Development Standard for OPR-C

Minimum Lot Size

Maximum Floor Area Ratio

(see Section 908.03.D.3.g for Special Exception for additional floor area)

Minimum Front Setback

Minimum Rear Setback

(when adjacent to way)

Minimum Interior Sideyard Setback

Maximum Lot Coverage

Maximum Height

Maximum Buildable Area per 6.0 FAR

lot A (9,900sf x6.0) + lot B (6,730sf x6.0)

None

6:1

0 feet

0 feet

0 feet

90%

85 feet

99,780 sf

Specific Project Development Plan Standards

- No accessory surface parking will be permitted without the applicant providing the alternatives considered and the reasons why those alternatives were not determined to be acceptable by the applicant.

- New construction shall maintain eight-five (85) percent building frontage along the established build-to-line.

- The street level facade shall be transparent between the height of three (3) feet and eight (8) feet above the walkway grade for no less than sixty (60) percent of the horizontal length of the building facade.

- Ground-floor retail or commercial spaces shall be provided along the entire building frontage along Forbes and Fifth Avenues.

- All primary structures shall provide a prominent and highly visible street level doorway or entrance on the facades of the building which front onto either Fifth Avenue, Forbes Avenue or cross streets.

- Continuous pedestrian sidewalks shall be provided along the main facade of building that front onto Forbes Avenue and Fifth Avenue.

Permitted Uses

The following uses shall be permitted **by-right** in the OPR-C Subdistrict:

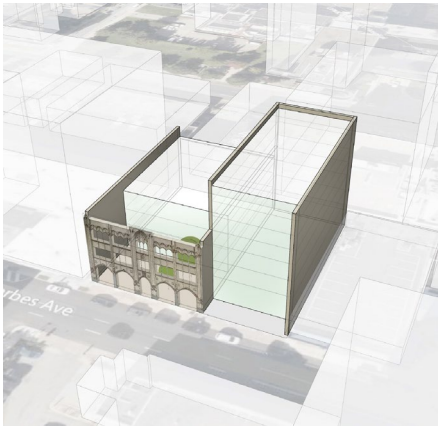
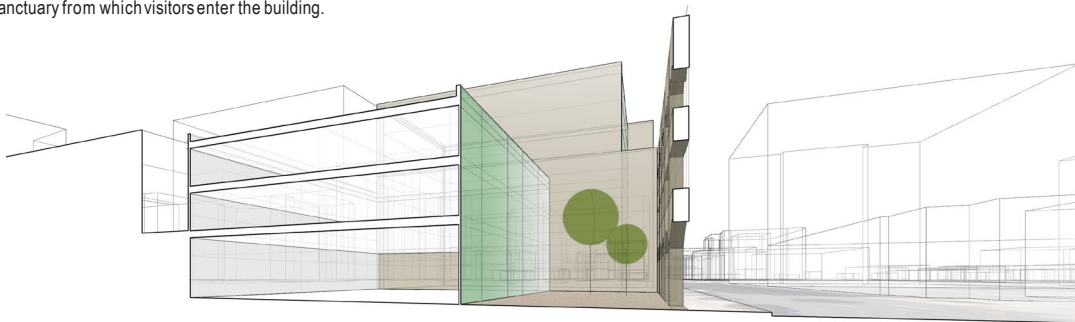
- Multi-unit Residential
- Art or Music Studio
- Bank or Financial Institution
- Bed and Breakfast
- Child Care
- Community Center
- Cultural Services
- Grocery Store
- Hotel/Motel
- Laboratory/Research Services
- Library
- Medical Office
- Office
- Parking Structure
- Religious Assembly
- Restaurant, Fast Food
- Restaurant
- Retail Sales and Services
- Sidewalk Cafe
- Vocational School







The historic facade is repurposed as an entry portal into an urban courtyard sanctuary from which visitors enter the building.



scheme A
 area 56,780sf
 stories 7



PWSA Customer Assistance Programs and PGH2O Cares

**Oakland Planning and Development
Corporation Oakland-Wide Meeting**

May 25, 2021

Assistance Programs

PGH₂O Customer Assistance Programs Which is right for you?

Our Customer Assistance Programs provide financial relief for income-qualified residential customers who are having difficulty paying their water and wastewater bill. Many options are available, and no one should have to choose between paying their water bill and other essential expenses. If you would like to discuss which options are right for you, please call 412-255-2423 (Press 5) Monday – Friday from 8:00am – 6:00pm.



Winter Shut Off Moratorium: December 1st through March 31st for customers who are at or below 300% of the Federal Poverty Level (FPL).

Bill Discount Program: 100% reduction of minimum monthly water and wastewater conveyance charges for customers who are at or below 150% of FPL. An additional 20% reduction of the cost of water used for customers with income levels less than or equal to 50% of FPL.

Hardship Grant Program: Cash grants up to \$300 per year for customers at or below 150% of FPL. The sincere effort of payment will continue to be waived through 2025.

Lead Service Line Reimbursement Program: We will assist customers with the cost of private lead service line replacement if customers choose to proactively hire a plumber and complete the work. For more information, visit lead.pgh2o.com/leadreimbursement.

People in household	50% of FPL	100% of FPL	300% of FPL
1	\$6,640	\$9,500	\$28,000
2	\$9,760	\$13,500	\$40,000
3	\$12,920	\$17,500	\$54,000
4	\$16,080	\$21,500	\$68,000
5	\$19,240	\$25,500	\$82,000
6	\$22,400	\$29,500	\$96,000
7	\$25,560	\$33,500	\$110,000
8	\$28,720	\$37,500	\$124,000
9	\$31,880	\$41,500	\$138,000
10	\$35,040	\$45,500	\$152,000

Programs are subject to change without notice. Please visit lead.pgh2o.com/leadreimbursement for more information.

To learn more, please visit pgh2o.com/CAP or contact Dollar Energy Fund by calling 866-762-2348 to enroll.
Free translation services are available by calling 412-255-2423 (Press 5).



Point Liberty Plaza I
600 Point Avenue
Pittsburgh, PA 15222

Info@pgh2o.com
T 412-255-2423
F 412-255-2425

www.pgh2o.com
@pgh2o
facebook.com/pgh2o

Customer Service
Emergencies:
412-255-2429

- Bill Discount Program (BDP)
- Bill Discount Plus +
- PWSA Hardship Grant
- Clean Water Assistance Fund (CWAFF)
- LSLRP: Contact Lead Help 412-255-8987
LeadHelp@pgh2o.com



Customer Assistance

Get help paying your bills



Pilot Program: Arrearage Forgiveness!

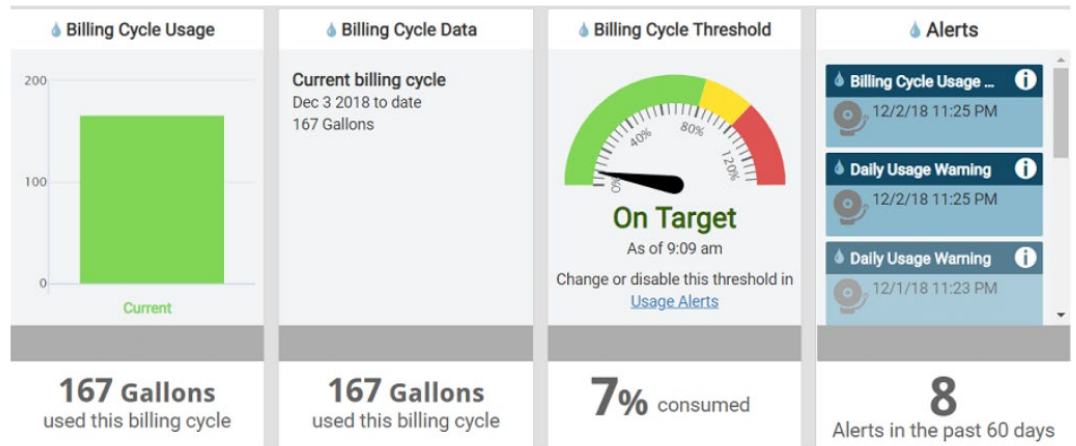
- \$15 monthly credit for each on time payment to pay down high balances
- Additional payment plans available, even to those who may have been denied a payment plan in the past

Available to those enrolled in the BDP and on an active payment arrangement.



Check Your Water Usage

Our [Customer Usage Portal](#) is a free tool that helps customers track their real-time water usage and receive alerts when there is a spike in water usage. Setting usage alerts can help you detect costly water leaks in your property.



Check Your Usage

Review water usage & set up alerts
for your account

donotreply@sensus-analytics.com

PWSA Customer Usage Portal Alert

The measured consumption for water meter
0096029474 has exceeded the daily usage alert

2/14/2021



PGH20 Cares Team



Available starting 5/28
for virtual and in person
events for on-site
customer enrollment

*COVID precautions still in place



Thank you

Questions or comments? Please
contact Cares - pgh2ocares@pgh2o.com



THANK YOU!

- Feedback form for the Croatian Fraternal Union building - bit.ly/croatianfraternalub
- The next **Oakland-Wide** Community Meeting is Tuesday, June 29 at 6:00 p.m. via Zoom and Facebook Live
- **Event calendar** – www.opdc.org/events
- Sign up for the **e-news** and meeting notices at www.opdc.org/contact-us
- **Social Media**
 - facebook.com/opdc.org
 - instagram.com/oaklandplanning
 - twitter.com/oaklandplanning
- **General inquiries** – questions@opdc.org