

Oakland Development Activities Meeting

- Heinz Chapel Fleche
- Thaw Hall
- University Club Terrace
- Schenley Quadrangle



October 18, 2022



Heinz Chapel Fleche



Heinz Chapel

Department of Neuroscience

Alumni Hall

Cathedral of Learning

Log Cabin

Bellefield Hall

Soldiers & Sailors Memorial

University Club

Nordenberg Hall

William Pitt Student Union

McCormick Hall

Bruce Hall

Thaw Hall

O'Hara Student Center

Gardner Steel Conference Center

Thackeray Hall

rick International Studies Academy

Henry St

Winthrop St

Filmore St

Forbe

Junctio Hollow

S Craig St

S Dithridge St

S Dithridge St

S Neville St

Bigelow Blvd

Lytton Ave

Fifth Ave

Bigelow Blvd

Fifth Ave

Forbes Ave

Forbes Ave

Forbes Ave

Fifth Ave

S Bellefield Ave

Fifth Ave

S Ave

Sch

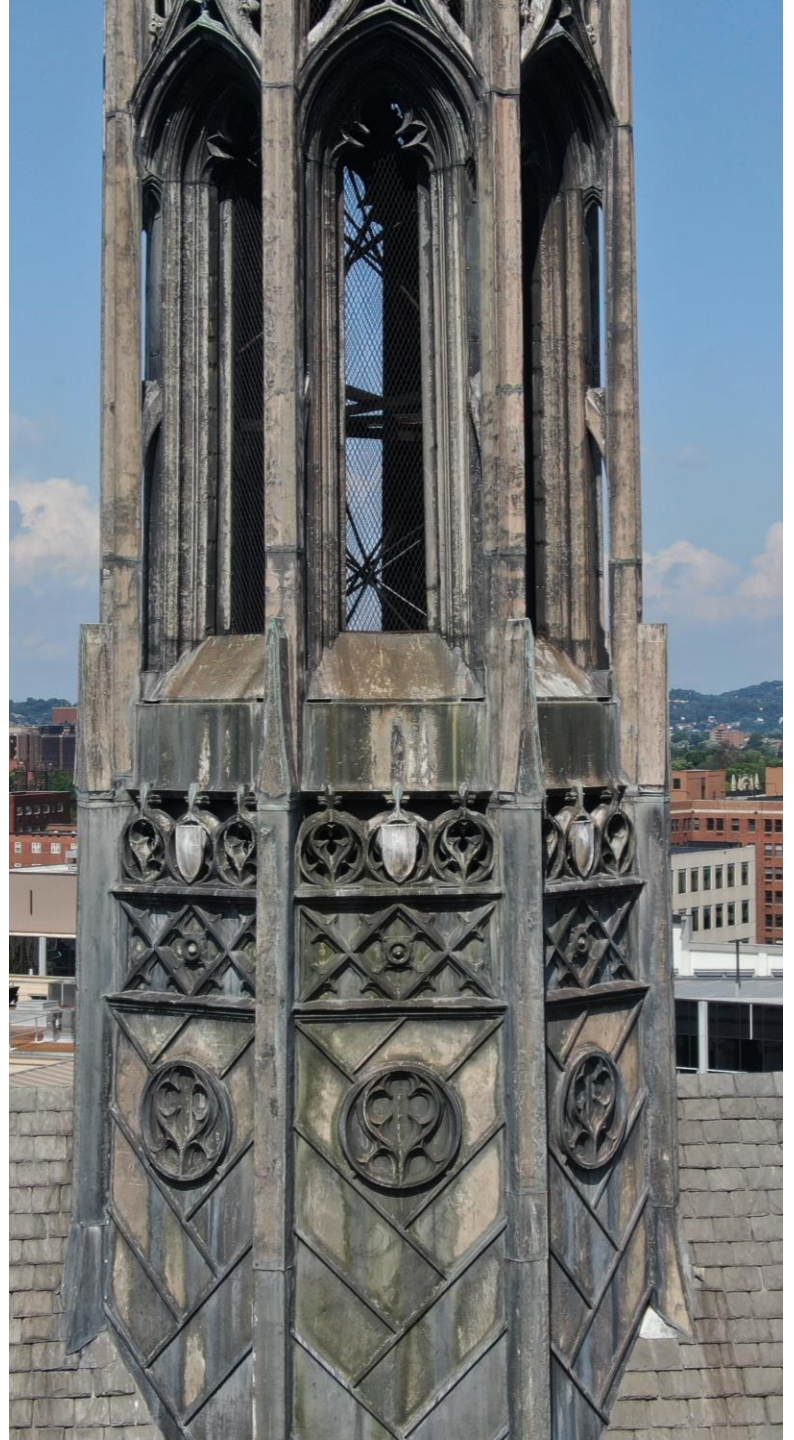
Schen

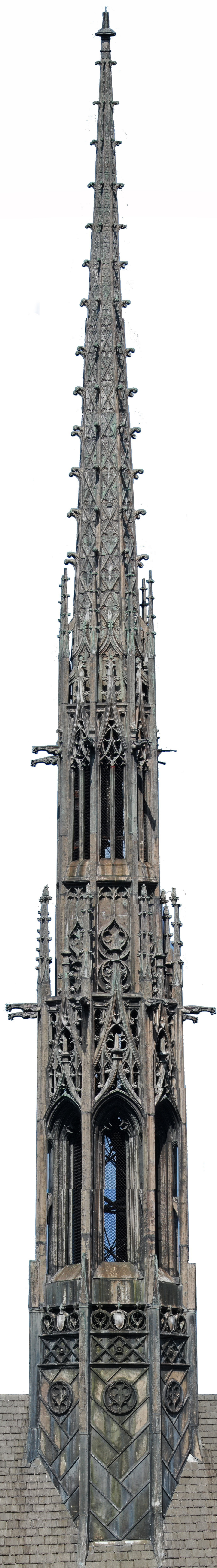
St

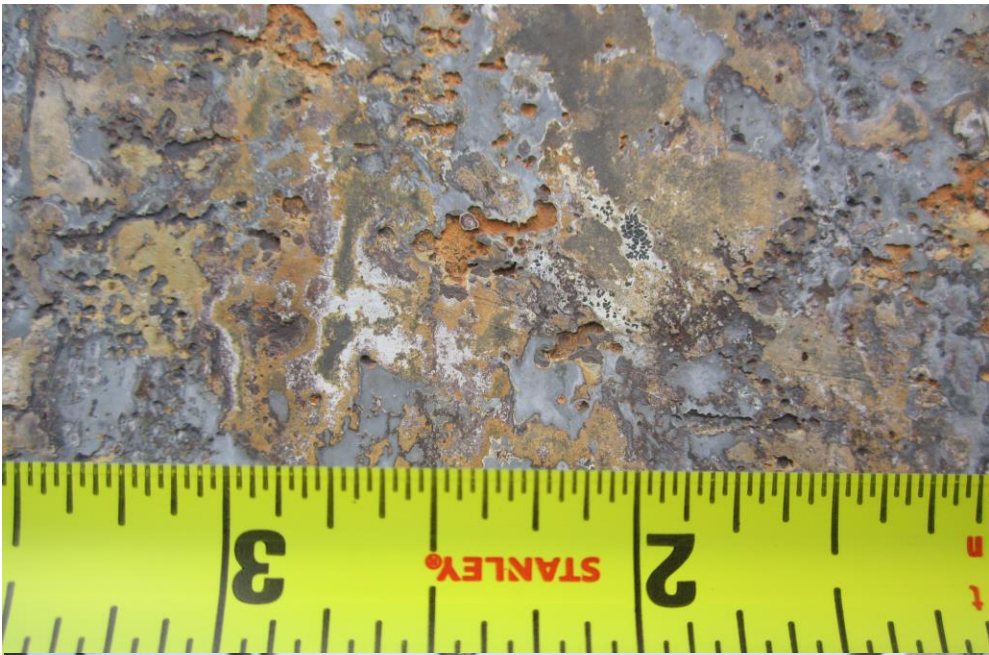
H

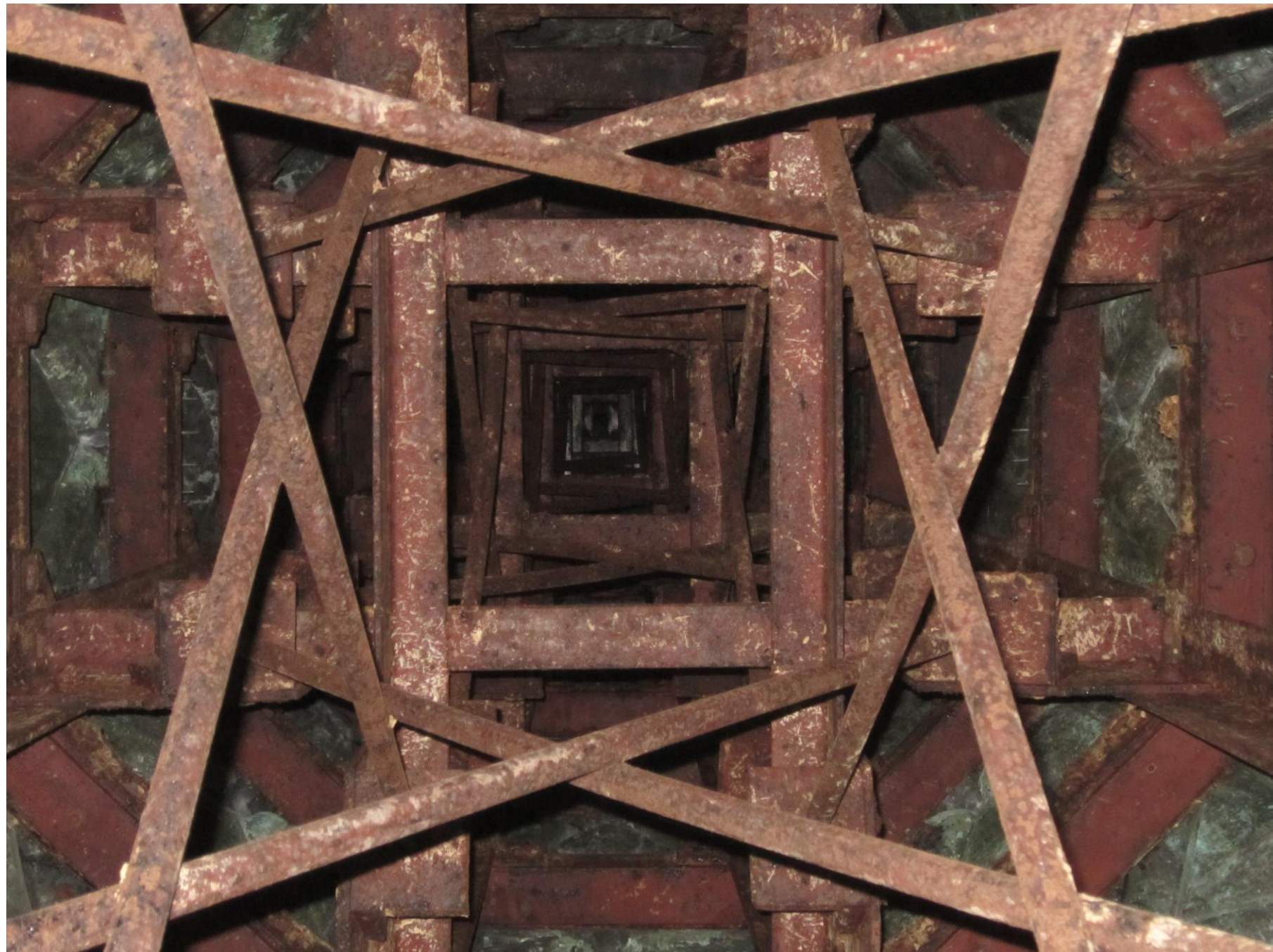














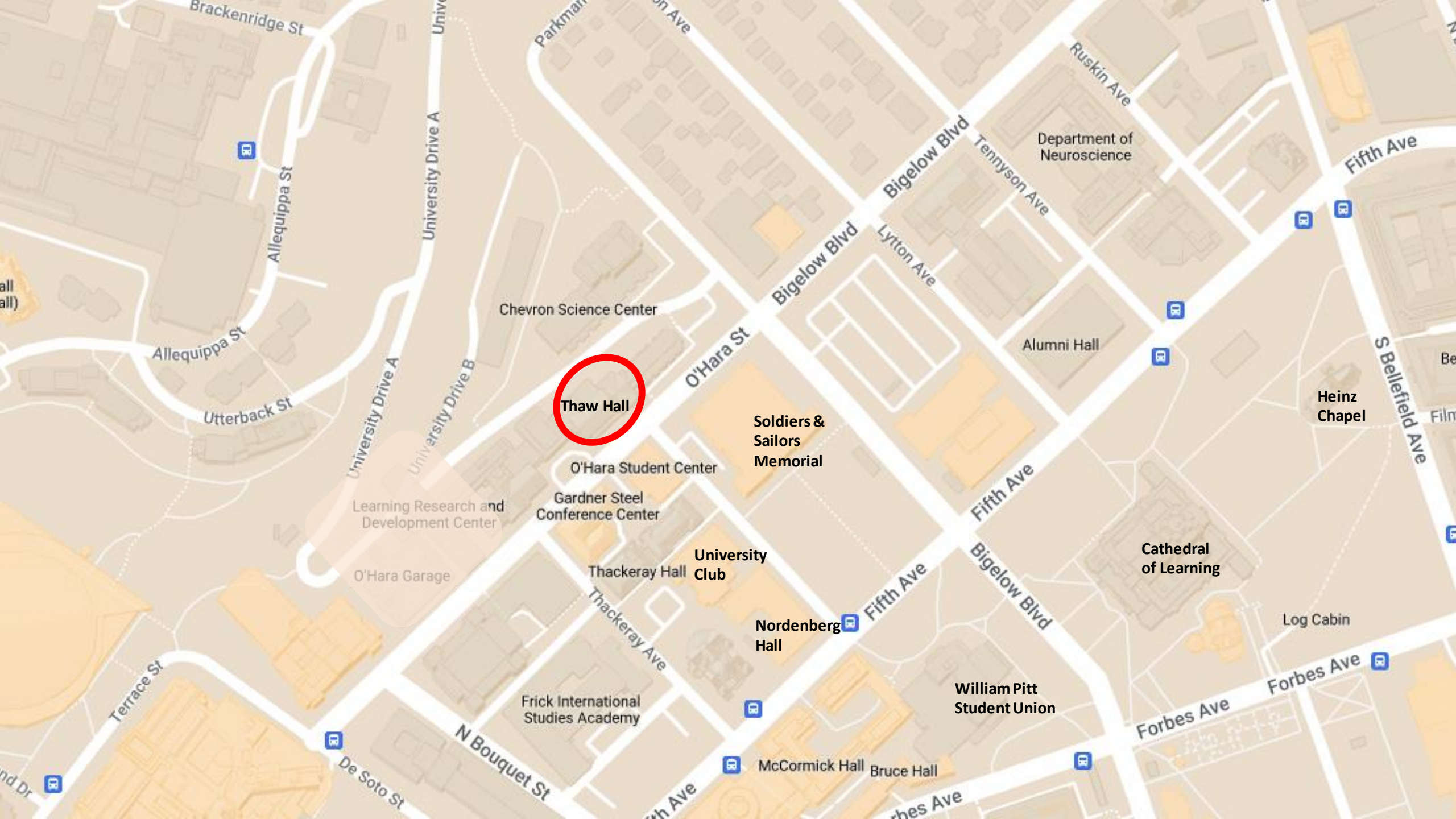


Questions?

Thaw Hall



SCHOOL OF ENGINEERING



Thaw Hall

Chevron Science Center

Soldiers & Sailors Memorial

O'Hara Student Center

Gardner Steel Conference Center

University Club

Thackeray Hall

Nordenberg Hall

Frick International Studies Academy

McCormick Hall

Bruce Hall

William Pitt Student Union

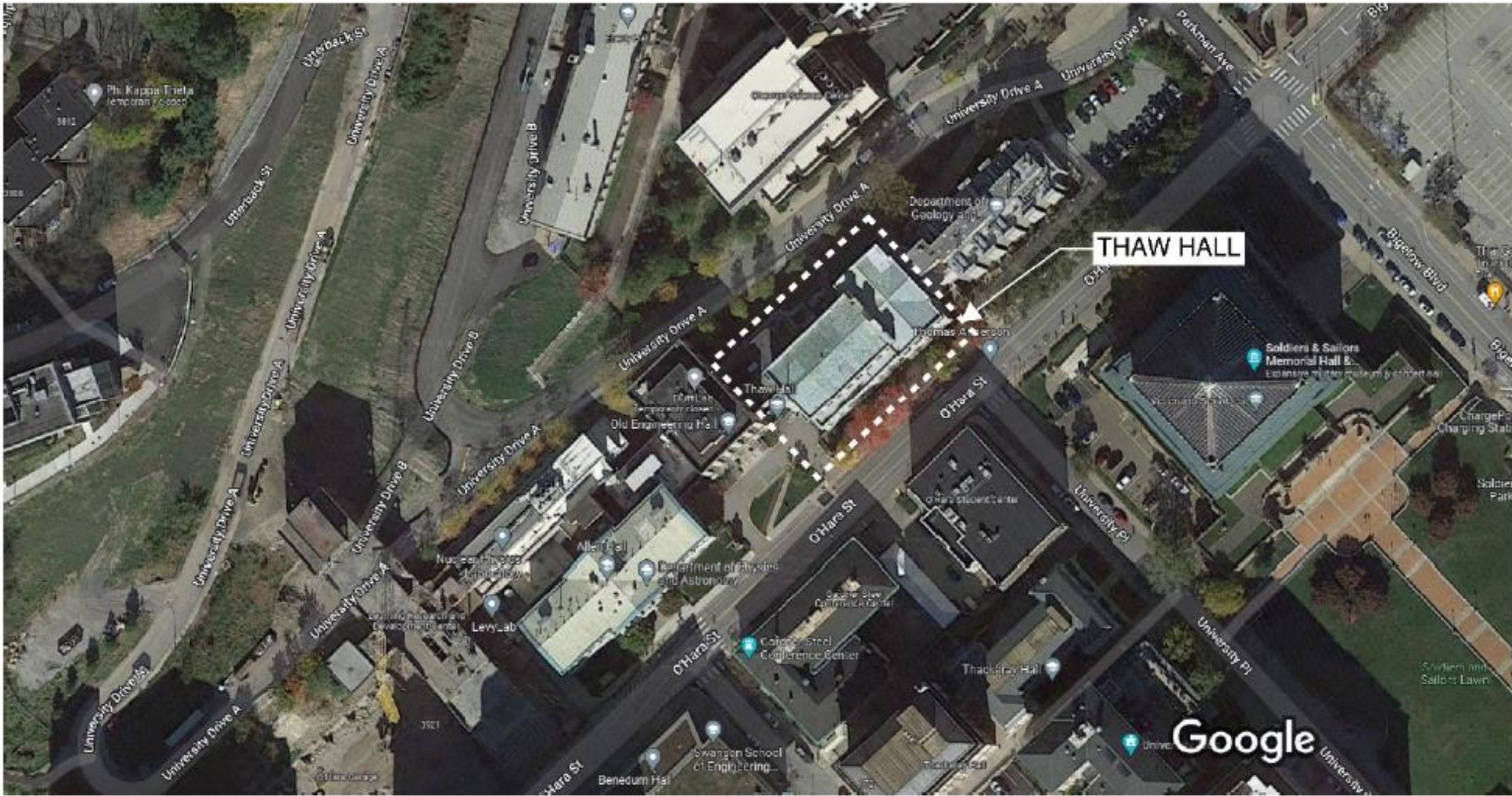
Cathedral of Learning

Heinz Chapel

Department of Neuroscience

Alumni Hall

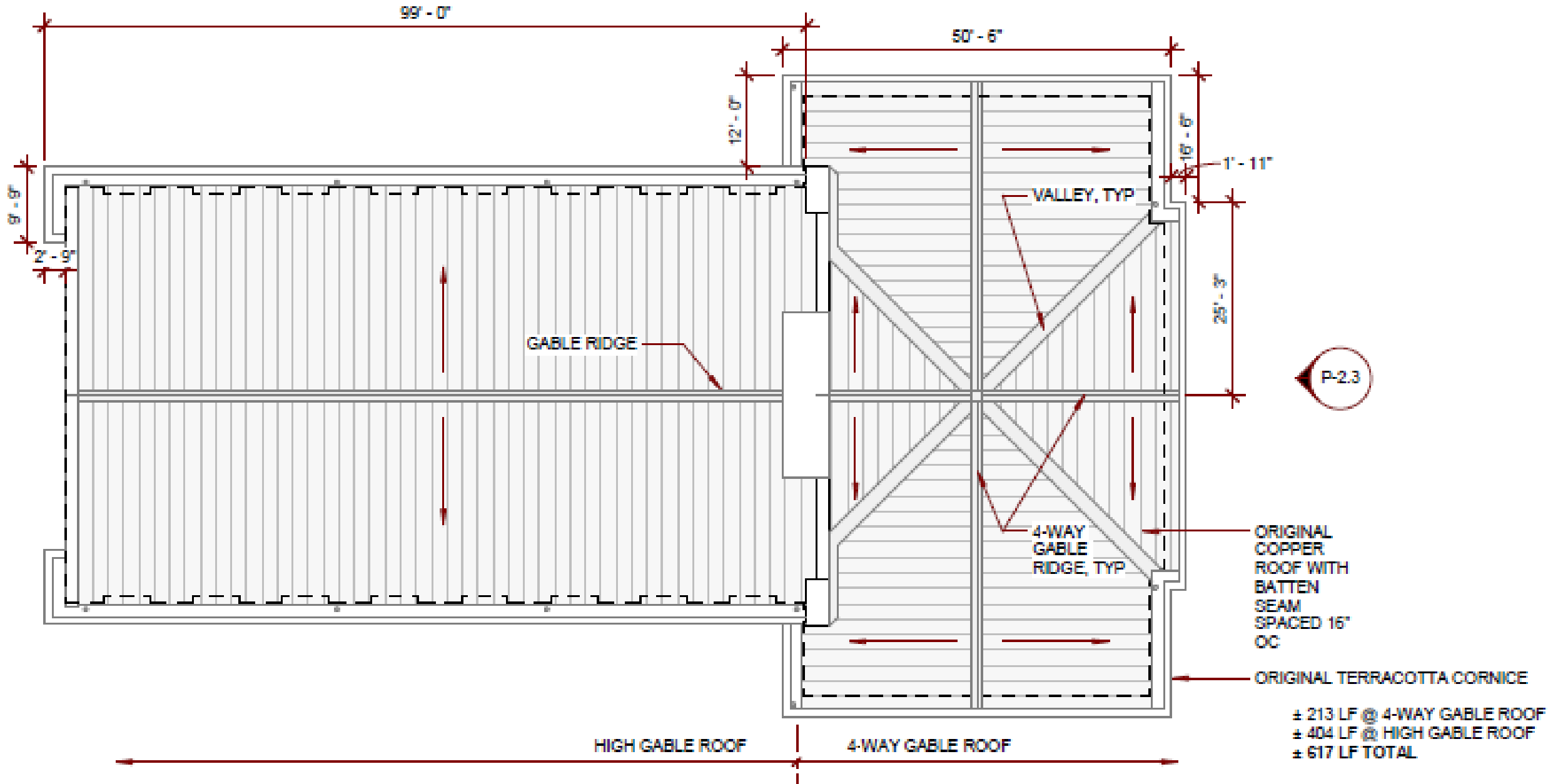
Log Cabin



Current Aerial photo from Google Earth







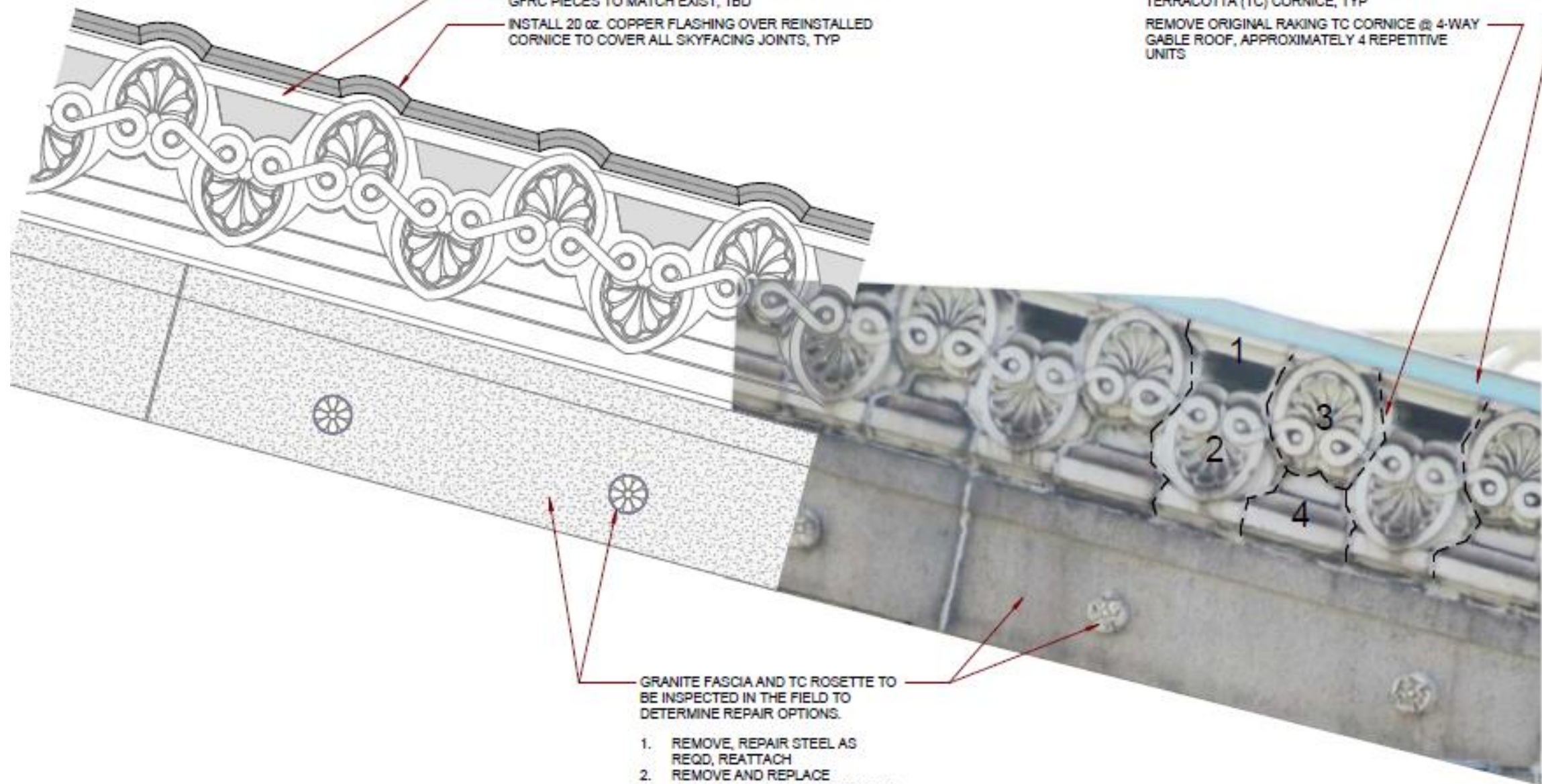


PROPOSED

- REINSTALL SALVAGED TC CORNICHE UNITS OR FABRICATE GFRG PIECES TO MATCH EXIST, TBD
- INSTALL 20 oz. COPPER FLASHING OVER REINSTALLED CORNICHE TO COVER ALL SKYFACING JOINTS, TYP

EXISTING

- REMOVE COPPER FLASHING OVER ORIGINAL TERRACOTTA (TC) CORNICHE, TYP
- REMOVE ORIGINAL RAKING TC CORNICHE @ 4-WAY GABLE ROOF, APPROXIMATELY 4 REPETITIVE UNITS



GRANITE FASCIA AND TC ROSETTE TO BE INSPECTED IN THE FIELD TO DETERMINE REPAIR OPTIONS.

1. REMOVE, REPAIR STEEL AS REQD, REATTACH
2. REMOVE AND REPLACE GRANITE/TC ROSETTE TO MATCH EXISTING
3. NO WORK

PROPOSED

REINSTALL SALVAGED TC CORNICE UNITS OR FABRICATE GFRG PIECES TO MATCH EXIST, TBD

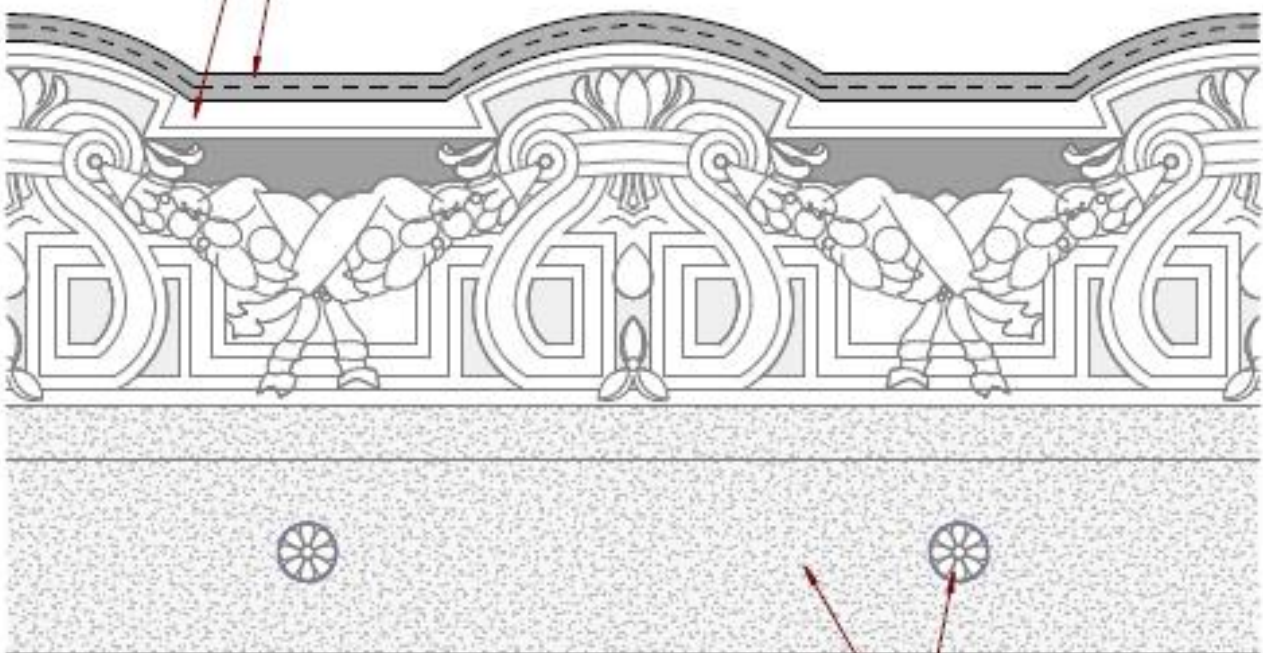
INSTALL 20 oz. COPPER FLASHING OVER REINSTALLED CORNICE TO COVER ALL SKYFACING JOINTS, TYP

EXISTING

REMOVE COPPER FLASHING OVER ORIGINAL TERRACOTTA (TC) CORNICE, TYP

REMOVE ORIGINAL TC CORNICE @ HIGH ROOF, APPROXIMATELY 4 REPETITIVE UNITS

APPROXIMATE TC JOINT LOCATION



GRANITE FASCIA AND TC ROSETTE TO BE INSPECTED IN THE FIELD TO DETERMINE REPAIR OPTIONS.

1. REMOVE, REPAIR STEEL AS REQD, REATTACH
2. REMOVE AND REPLACE GRANITE/TC ROSETTE TO MATCH EXISTING
3. NO WORK





PHOTO 2

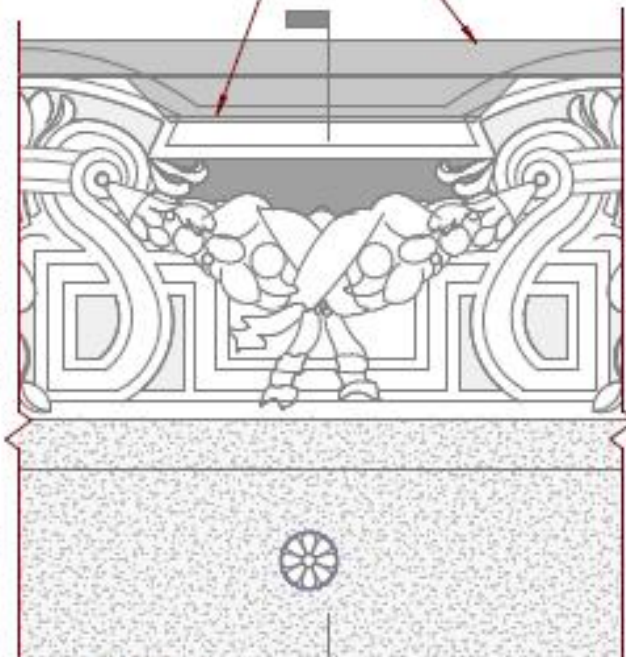
NON-ORIGINAL ALUMINUM
DOWNSPOUT ROUTED TO
EXTERNAL STORM LEADER
NON-ORIGINAL CORUGATED
METAL SOFFIT



PHOTO 1

EXIST COPPER COPING
OVER TC

ORIGINAL GRANITE
FASCIA



CORNICE ELEVATION

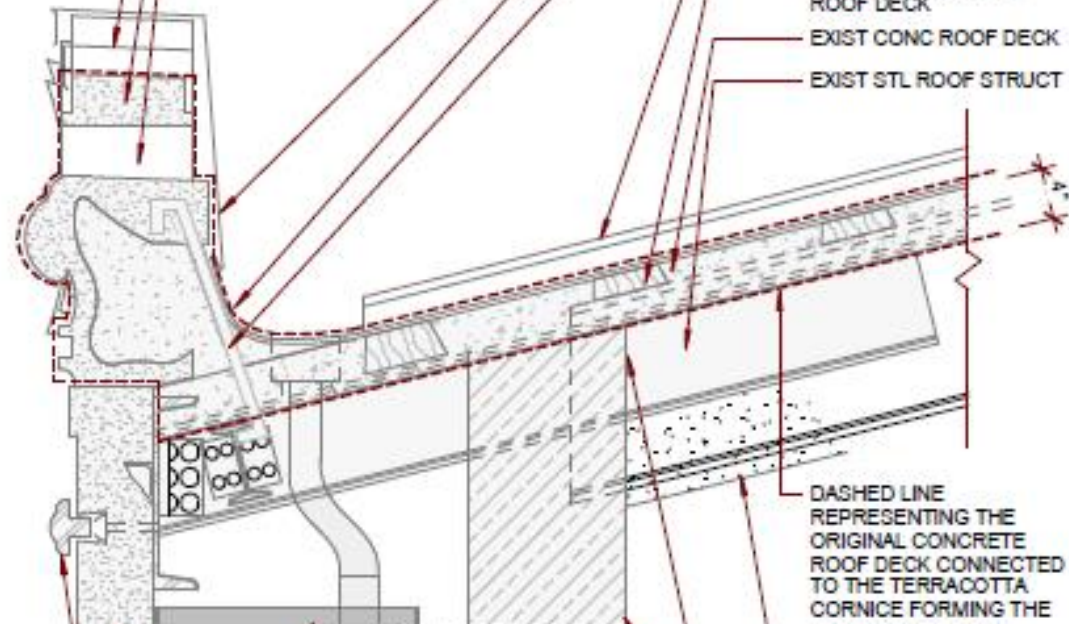
ORIGINAL GRANITE
FASCIA

ORIGINAL
TERRACOTTA
ROSETTE
COVERING
STEEL ANCHOR

EXISTING (NON-ORIGINAL)
CORUGATED METAL SOFFIT,
SEE PHOTO 1 & 2

NON-ORIGINAL ALUMINUM
DOWNSPOUT ROUTED TO
EXTERNAL STORM LEADER

LOWER FLASHING
(TO BE VERIFIED)
TC HORIZ PIECE
(TO BE VERIFIED)
TC VOID (TO BE
VERIFIED)



EXIST COPPER FLASHING
EXIST INTEGRAL COPPER
GUTTER
EXIST IRON ANCHOR BTWN
ROOF SLAB AND TC
CORNICE (TO BE VERIFIED)
EXIST COPPER BATTEN
SEAM ROOF
EXIST WOOD NAILER
EMBEDDED IN CONC
ROOF DECK
EXIST CONC ROOF DECK
EXIST STL ROOF STRUCT

DASHED LINE
REPRESENTING THE
ORIGINAL CONCRETE
ROOF DECK CONNECTED
TO THE TERRACOTTA
CORNICE FORMING THE
INTEGRAL GUTTER

CONC COVER, TYP

EXIST MAS WALL UP TO
UNDERSIDE OF EXIST
CONC ROOF DECK

CORNICE SECTION







Questions?



A photograph of a large, multi-story brick building with a prominent arched window on the second floor. The building is partially obscured by large, leafy green trees. In the foreground, two white cars are parked on a street. A fire hydrant is visible on the sidewalk. Several parking signs are posted along the street. The sky is blue with some light clouds.

University Club 4th Floor Terrace



University Club

Soldiers & Sailors Memorial

Thaw Hall

O'Hara Student Center

Gardner Steel Conference Center

Learning Research and Development Center

O'Hara Garage

Thackeray Hall

Nordenberg Hall

Frick International Studies Academy

William Pitt Student Union

Cathedral of Learning

Log Cabin

Heinz Chapel

Alumni Hall

McCormick Hall

Bruce Hall

Barco Law Building

Biomedical Science Tower

Lothrop Hall

Oakland Ave

Fifth Ave

Forbes Ave

Forbes Ave

Forbes Ave

Schenley Drive

S Bellefield Ave

Fifth Ave

Bigelow Blvd

Fifth Ave

Fifth Ave

S Bouquet St

N Bouquet St

De Soto St

Terrace St

Allequippa St

Utterback St

University Drive A

University Drive B

Chevron Science Center

Alumni Hall

Heinz Chapel

Cathedral of Learning

Log Cabin

Nordenberg Hall

Frick International Studies Academy

William Pitt Student Union

McCormick Hall

Bruce Hall

Barco Law Building

Biomedical Science Tower

Lothrop Hall

Oakland Ave

Fifth Ave

Forbes Ave

Forbes Ave

Forbes Ave

Schenley Drive

S Bellefield Ave

Fifth Ave

Bigelow Blvd

Fifth Ave

Fifth Ave

S Bouquet St

N Bouquet St

De Soto St

Terrace St

Allequippa St

Utterback St

University Drive A

University Drive B

Chevron Science Center

Alumni Hall

Heinz Chapel

Cathedral of Learning

Log Cabin

Nordenberg Hall

Frick International Studies Academy

William Pitt Student Union

McCormick Hall

Bruce Hall

Barco Law Building

Biomedical Science Tower

Lothrop Hall

Oakland Ave

Fifth Ave

Forbes Ave

Forbes Ave

Forbes Ave

Schenley Drive

S Bellefield Ave

Fifth Ave

Bigelow Blvd

Fifth Ave

Fifth Ave

S Bouquet St

N Bouquet St

De Soto St

Terrace St

Allequippa St

Utterback St

University Drive A

University Drive B

Chevron Science Center

Alumni Hall

Heinz Chapel

Cathedral of Learning

Log Cabin

Nordenberg Hall

Frick International Studies Academy

William Pitt Student Union

McCormick Hall

Bruce Hall

Barco Law Building

Biomedical Science Tower

Lothrop Hall

Oakland Ave

Fifth Ave

Forbes Ave

Forbes Ave

Forbes Ave

Schenley Drive

S Bellefield Ave

Fifth Ave

Bigelow Blvd

Fifth Ave

Fifth Ave

S Bouquet St

N Bouquet St

De Soto St

Terrace St

Allequippa St

Utterback St

University Drive A

University Drive B

Chevron Science Center

Alumni Hall

Heinz Chapel

Cathedral of Learning

Log Cabin

Nordenberg Hall

Frick International Studies Academy

William Pitt Student Union

McCormick Hall

Bruce Hall

Barco Law Building

Biomedical Science Tower

Lothrop Hall

Oakland Ave

Fifth Ave

Forbes Ave

Forbes Ave

Forbes Ave

Schenley Drive

S Bellefield Ave

Fifth Ave

Bigelow Blvd

Fifth Ave

Fifth Ave

S Bouquet St

N Bouquet St

De Soto St

Terrace St

Allequippa St

Utterback St

University Drive A

University Drive B

Chevron Science Center

Alumni Hall

Heinz Chapel

Cathedral of Learning

Log Cabin

Nordenberg Hall

Frick International Studies Academy

William Pitt Student Union

McCormick Hall

Bruce Hall

Barco Law Building

Biomedical Science Tower

Lothrop Hall

Oakland Ave

Fifth Ave

Forbes Ave

Forbes Ave

Forbes Ave

Schenley Drive

S Bellefield Ave

Fifth Ave

Bigelow Blvd

Fifth Ave

Fifth Ave

S Bouquet St

N Bouquet St

De Soto St

Terrace St

Allequippa St

Utterback St

University Drive A

University Drive B

Chevron Science Center

Alumni Hall

Heinz Chapel

Cathedral of Learning

Log Cabin

Nordenberg Hall

Frick International Studies Academy

William Pitt Student Union

McCormick Hall

Bruce Hall

Barco Law Building

Biomedical Science Tower

Lothrop Hall

Oakland Ave

Fifth Ave

Forbes Ave

Forbes Ave

Forbes Ave

Schenley Drive

S Bellefield Ave

Fifth Ave

Bigelow Blvd

Fifth Ave

Fifth Ave

S Bouquet St

N Bouquet St

De Soto St

Terrace St

Allequippa St

Utterback St

University Drive A

University Drive B

Chevron Science Center

Alumni Hall

Heinz Chapel

Cathedral of Learning

Log Cabin

Nordenberg Hall

Frick International Studies Academy

William Pitt Student Union

McCormick Hall

Bruce Hall

Barco Law Building

Biomedical Science Tower

Lothrop Hall

Oakland Ave

Fifth Ave

Forbes Ave

Forbes Ave

Forbes Ave

Schenley Drive

S Bellefield Ave

Fifth Ave

Bigelow Blvd

Fifth Ave

Fifth Ave

S Bouquet St

N Bouquet St

De Soto St

Terrace St

Allequippa St

Utterback St

University Drive A

University Drive B

Chevron Science Center

Alumni Hall

Heinz Chapel

Cathedral of Learning

Log Cabin

Nordenberg Hall

Frick International Studies Academy

William Pitt Student Union

McCormick Hall

Bruce Hall

Barco Law Building

Biomedical Science Tower

Lothrop Hall

Oakland Ave

Fifth Ave

Forbes Ave

Forbes Ave

Forbes Ave

Schenley Drive

S Bellefield Ave

Fifth Ave

Bigelow Blvd

Fifth Ave

Fifth Ave

S Bouquet St

N Bouquet St

De Soto St

Terrace St

Allequippa St

Utterback St

University Drive A

University Drive B

Chevron Science Center

Alumni Hall

Heinz Chapel

Cathedral of Learning

Log Cabin

Nordenberg Hall

Frick International Studies Academy

William Pitt Student Union

McCormick Hall

Bruce Hall

Barco Law Building

Biomedical Science Tower

Lothrop Hall

Oakland Ave

Fifth Ave

Forbes Ave

Forbes Ave

Forbes Ave

Schenley Drive

S Bellefield Ave

Fifth Ave

Bigelow Blvd

Fifth Ave

Fifth Ave

S Bouquet St

N Bouquet St

De Soto St

Terrace St

Allequippa St

Utterback St

University Drive A

University Drive B

Chevron Science Center

Alumni Hall

Heinz Chapel

Cathedral of Learning

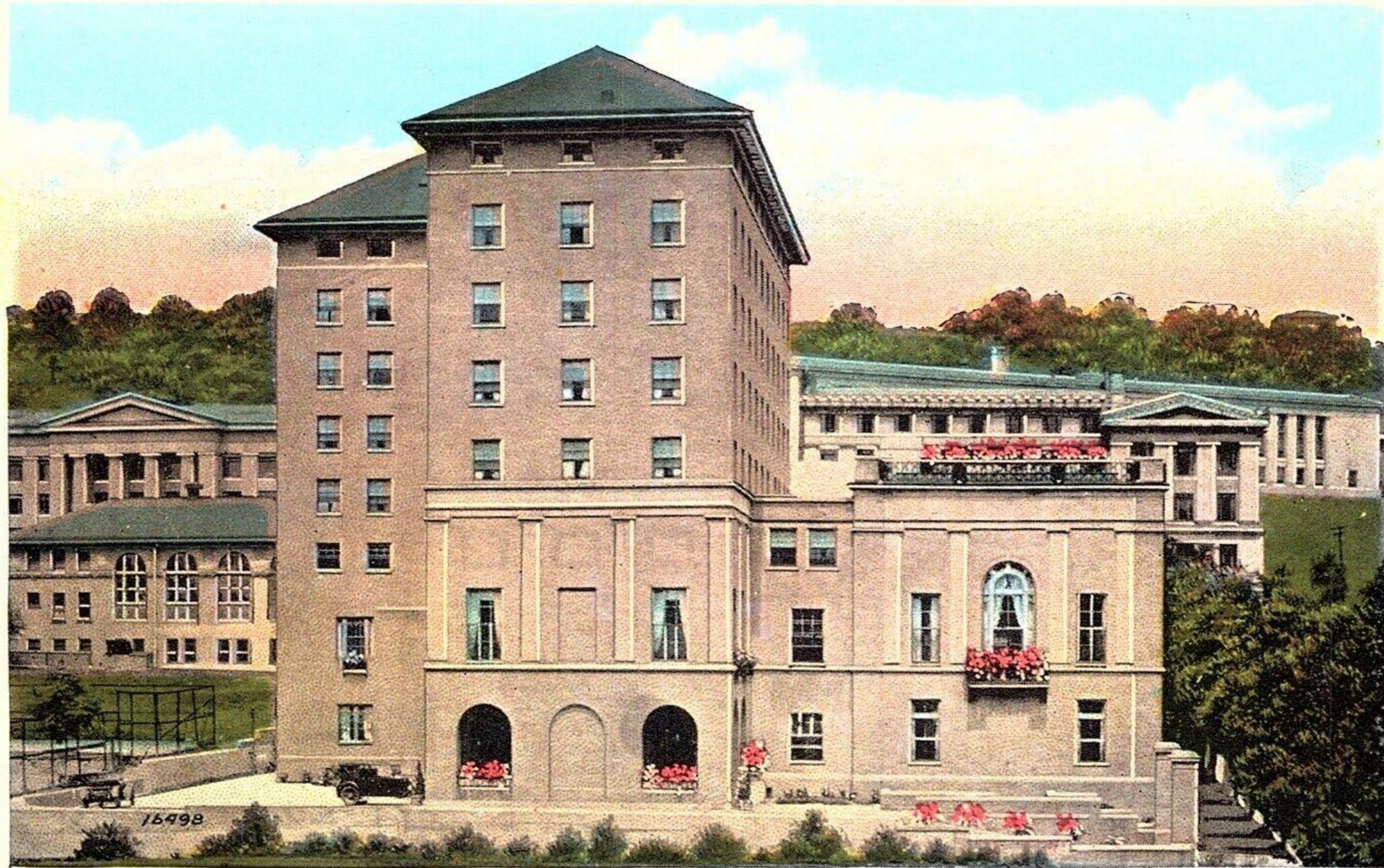
Log Cabin

Nordenberg Hall

Frick International Studies Academy

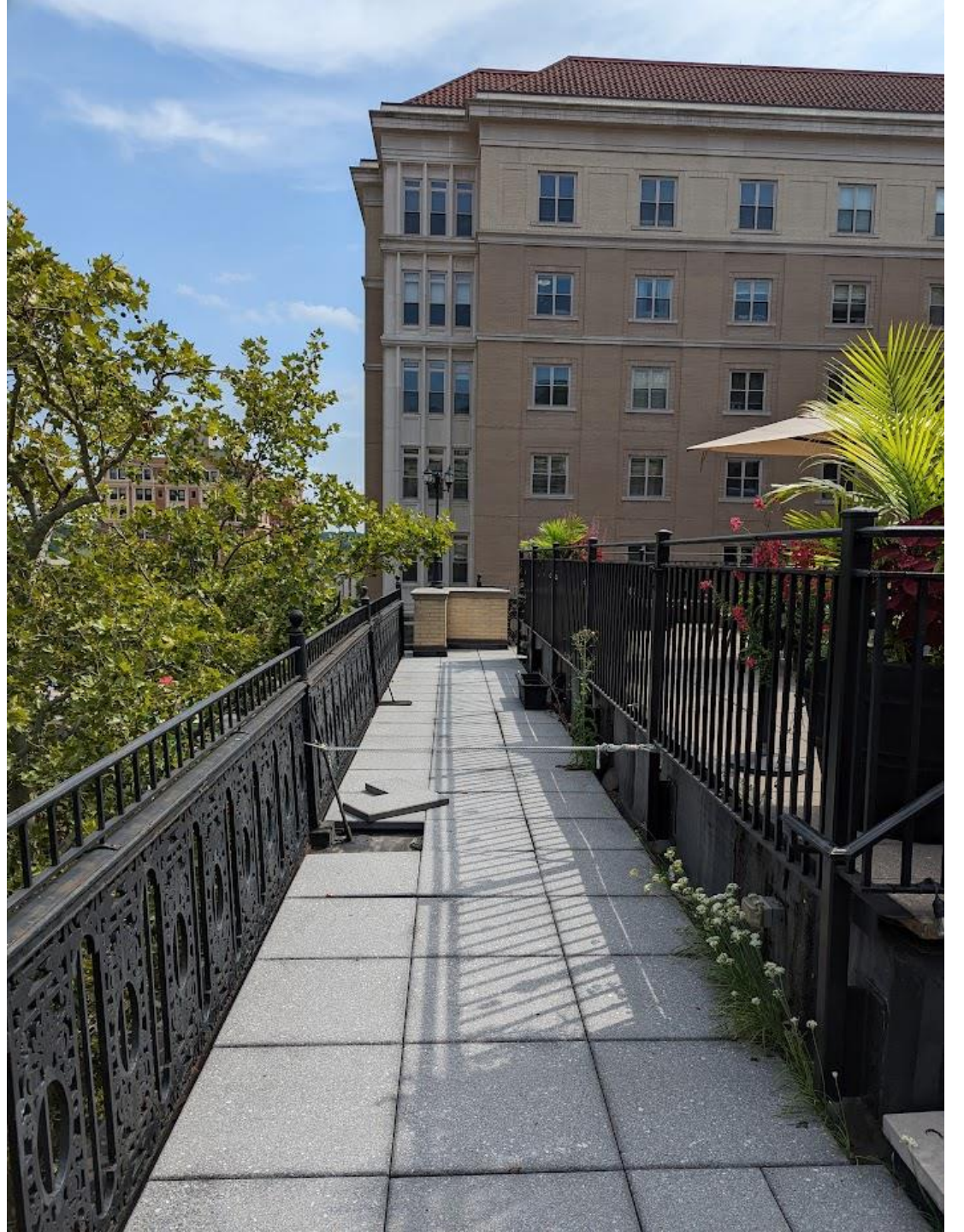
William Pitt Student Union

123:—University Club, Pittsburgh, Pa.







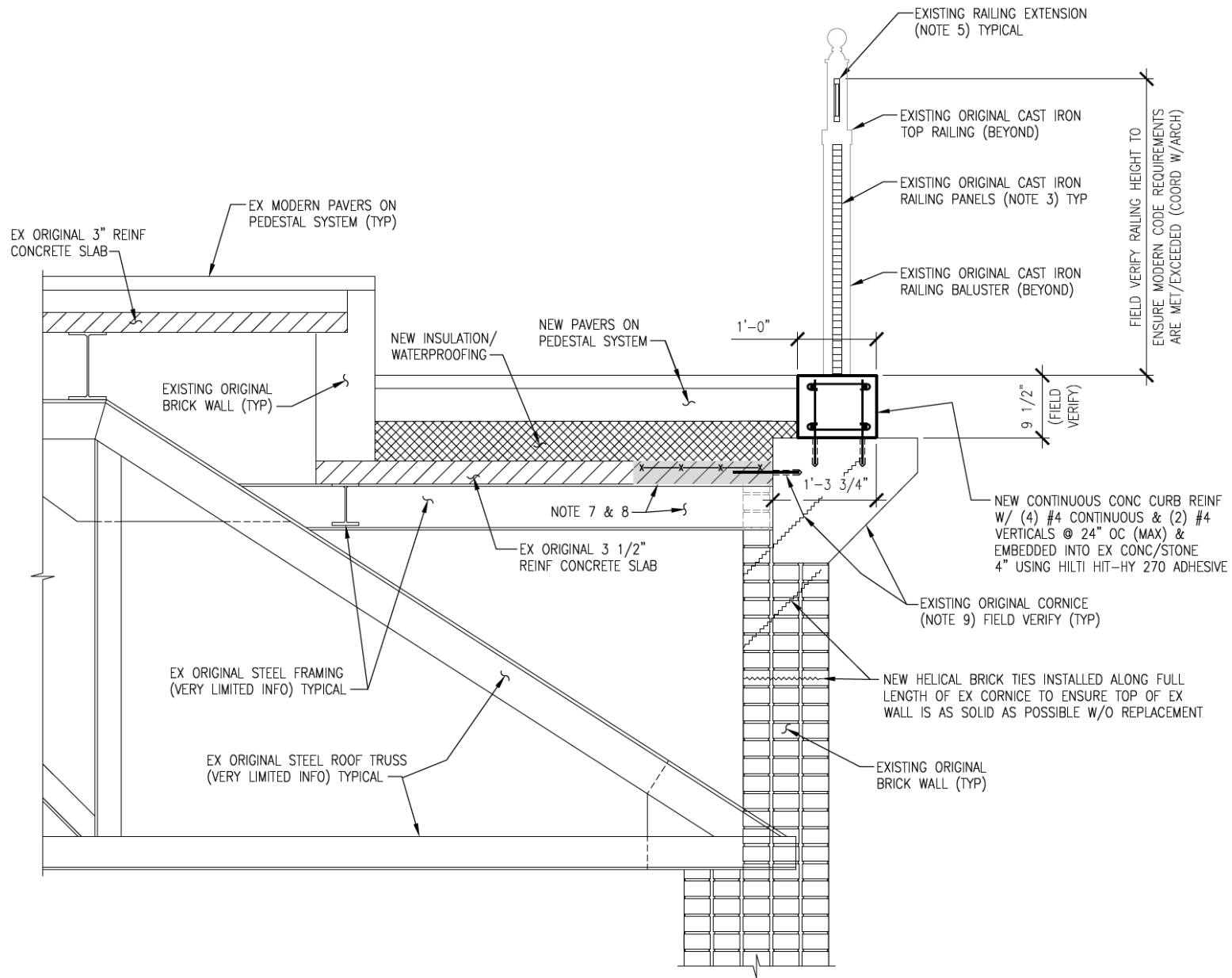








7 RENDER - RAILING DETAIL INSIDE VIEW



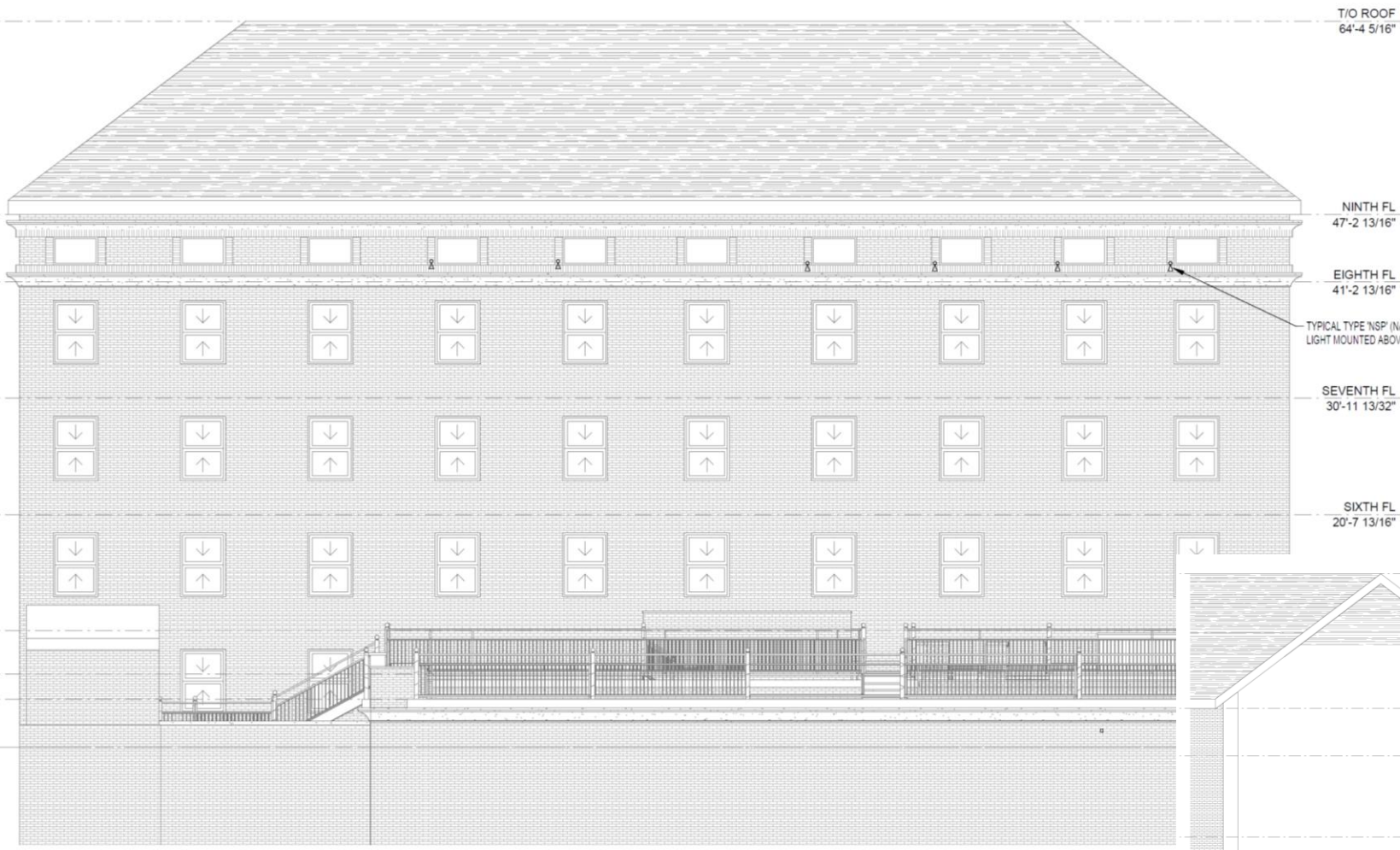
3
S2.00

TYPICAL RAILING REPAIR SECTION

SCALE: 3/4" = 1'-0"







T/O ROOF
64'-4 5/16"

NINTH FL
47'-2 13/16"

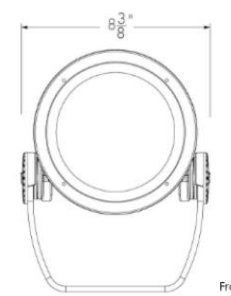
EIGHTH FL
41'-2 13/16"

SEVENTH FL
30'-11 13/32"

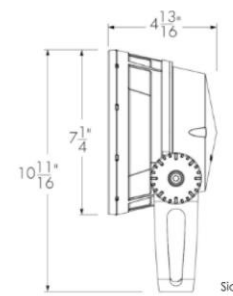
SIXTH FL
20'-7 13/16"

TYPICAL TYPE 'NSP' (NARROW S
LIGHT MOUNTED ABOVE LEDGE

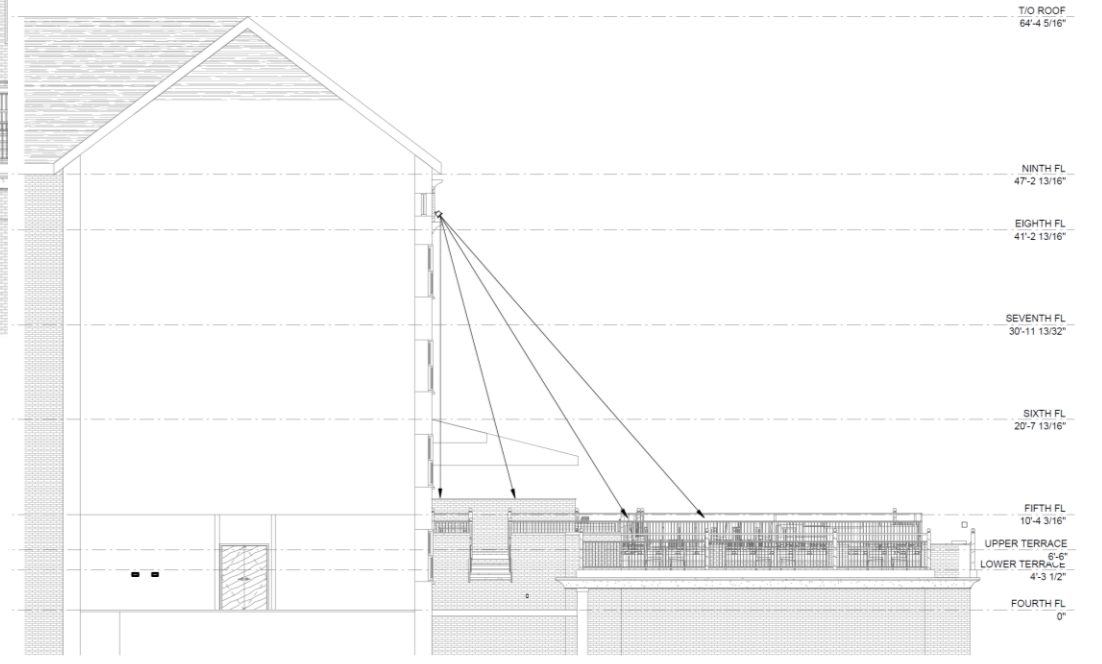
3 LIGHTING FIXTURE TYPE 'NSP' DETAIL - EAST ELEVATION



Front view



Side view



T/O ROOF
64'-4 5/16"

NINTH FL
47'-2 13/16"

EIGHTH FL
41'-2 13/16"

SEVENTH FL
30'-11 13/32"

SIXTH FL
20'-7 13/16"

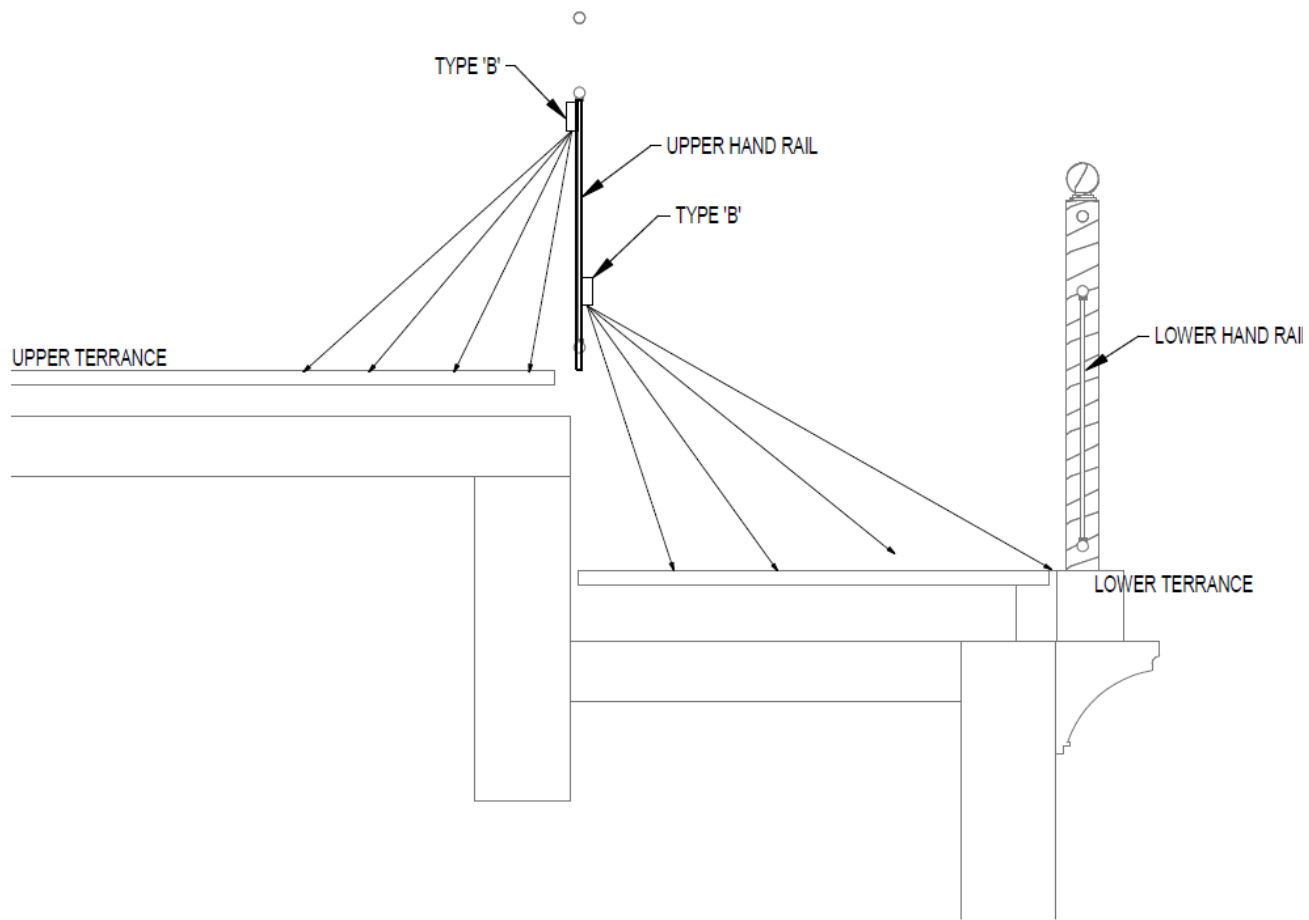
FIFTH FL
10'-4 3/16"

UPPER TERRACE
6'-0"

LOWER TERRACE
4'-3 1/2"

FOURTH FL
0"

2 LIGHTING FIXTURE TYPE 'NSP' DETAIL - SOUTH ELEVATION



1 TYPE 'B'
E7.01 NO SCALE

SQUARE BACK FOR SQUARE RAILING POSTS
AND ROUNDED BACK FOR ROUNDED RAILING
POSTS

1 LIGHTING FIXTURE TYPE 'B' DETAIL



A street scene featuring a large, multi-story brick building with several windows. Two large, leafy green trees are in the foreground, partially obscuring the building. Two white cars are parked on the street in front of the building. A fire hydrant is visible on the sidewalk. There are several parking signs, including a 'No Parking' sign and a 'Permitted Parking' sign. The sky is blue with some clouds. The word 'Questions?' is overlaid in white text in the center of the image.

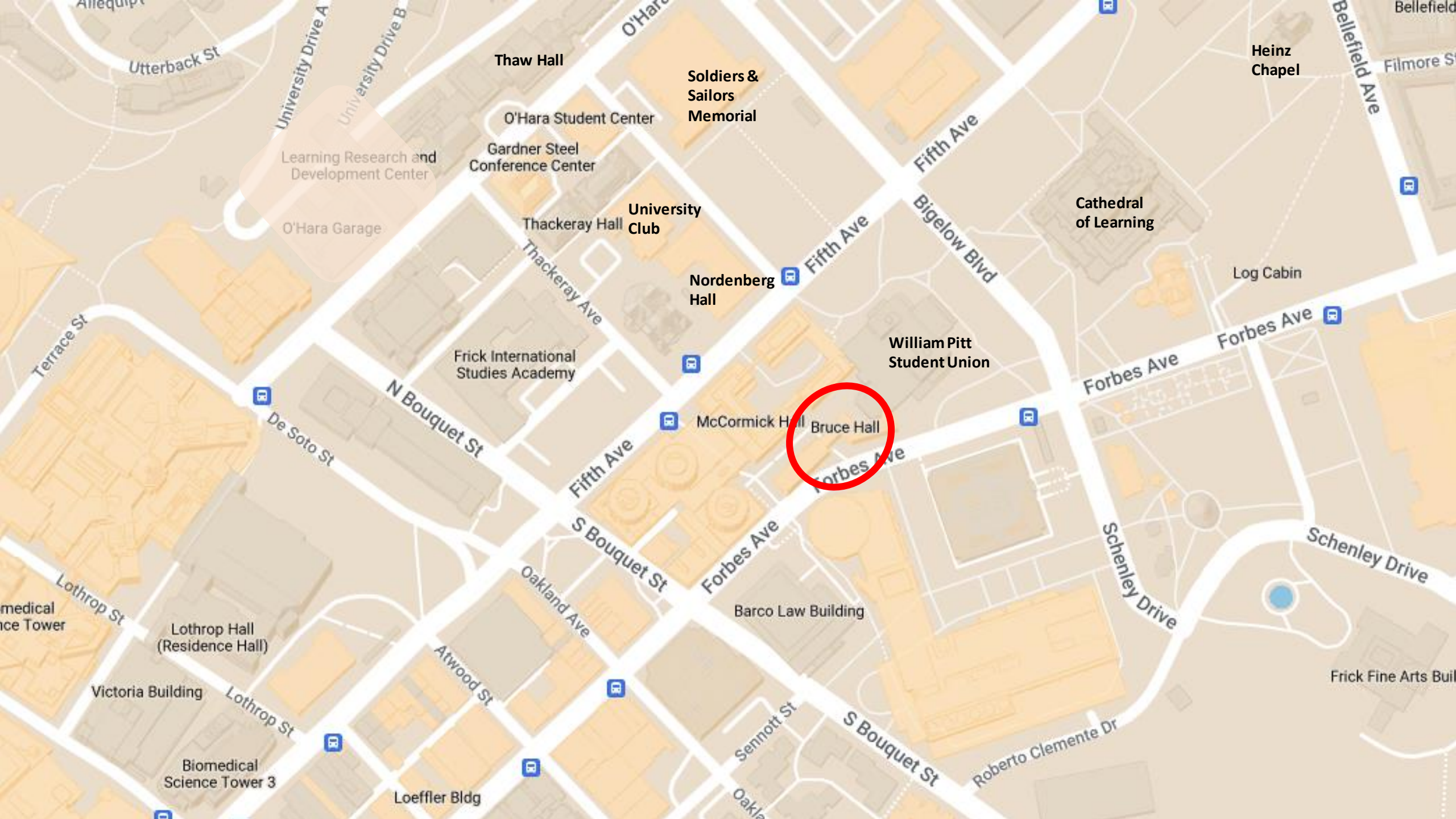
Questions?

UNIVERSITY OF PITTSBURGH



Schenley Quadrangle Steps





Thaw Hall

Soldiers & Sailors Memorial

O'Hara Student Center

Gardner Steel Conference Center

University Club

Thackeray Hall

Nordenberg Hall

Frick International Studies Academy

McCormick Hall

Bruce Hall

William Pitt Student Union

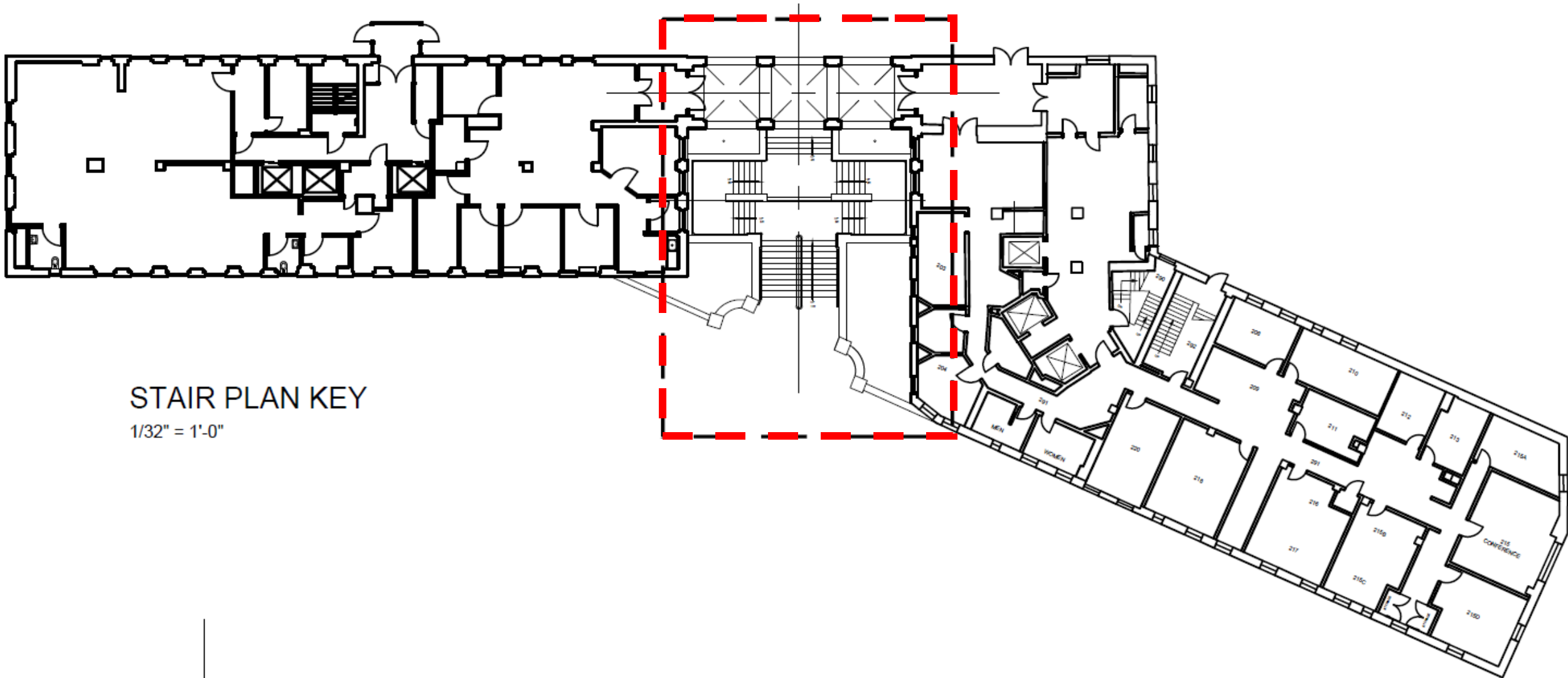
Cathedral of Learning

Log Cabin

Heinz Chapel

Frick Fine Arts Building





STAIR PLAN KEY

1/32" = 1'-0"

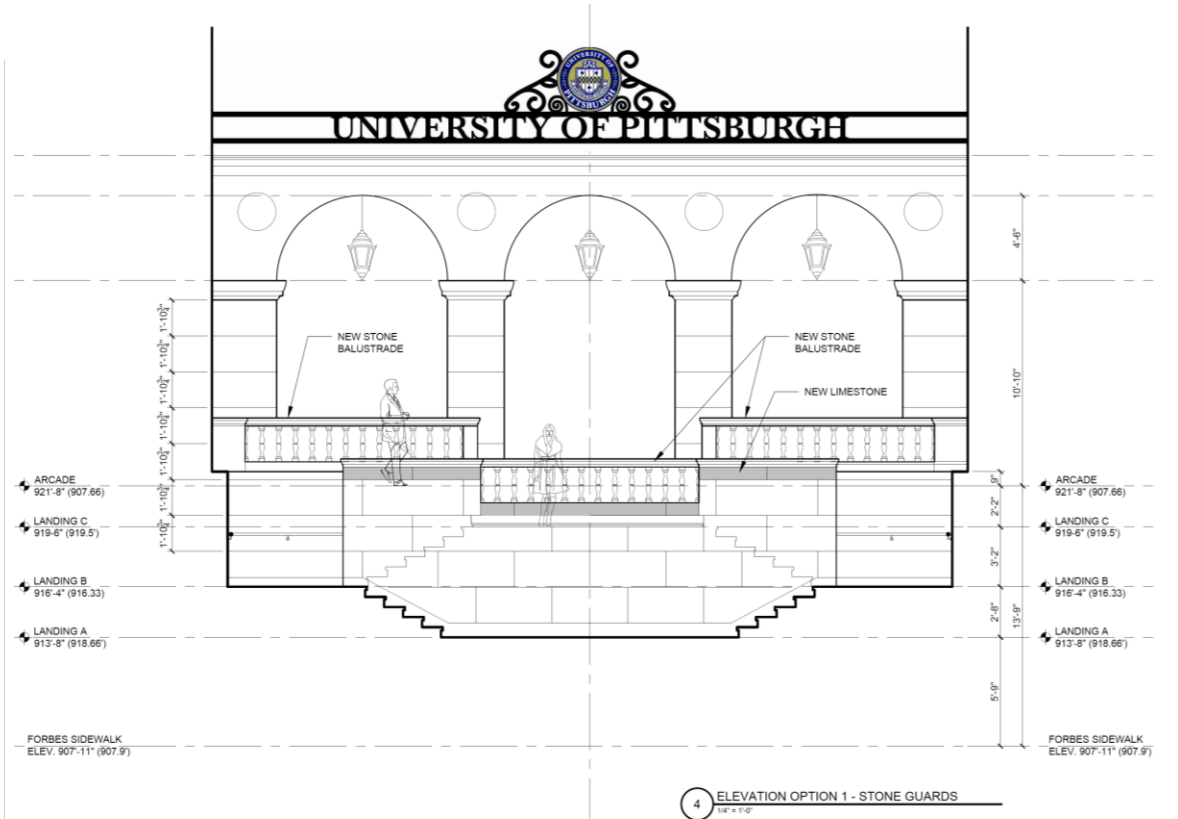
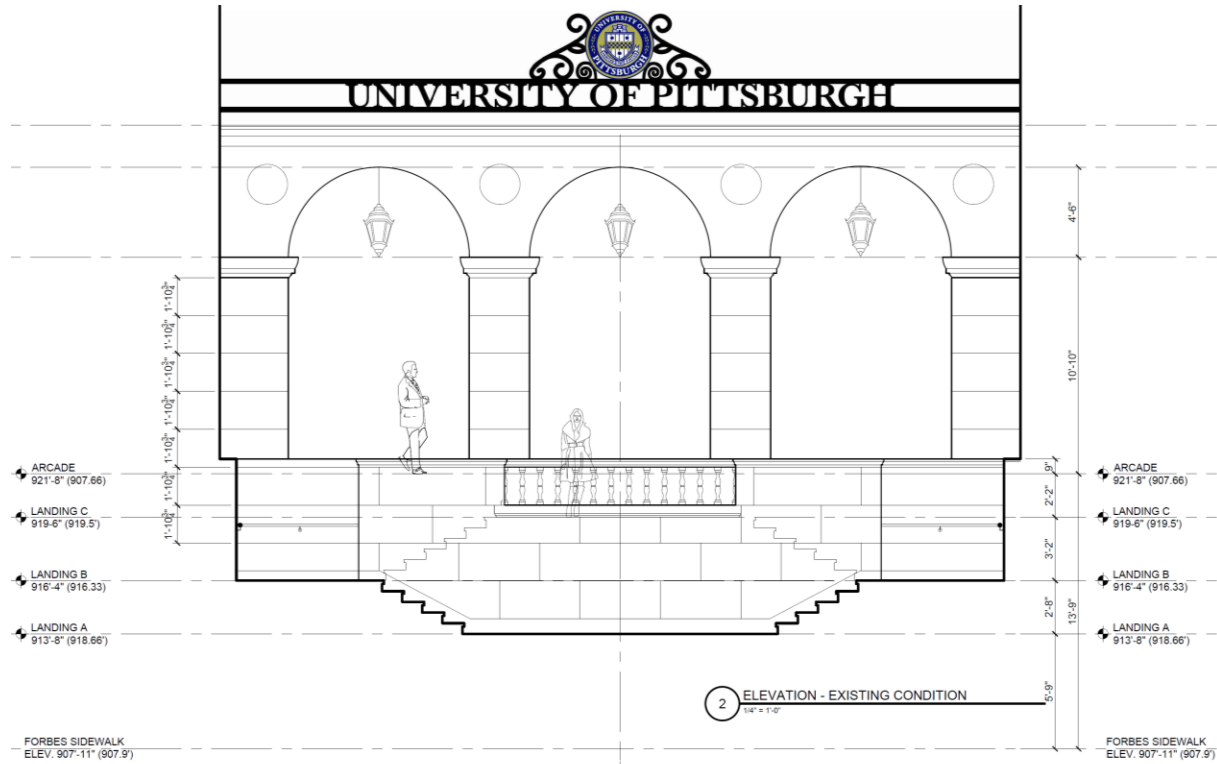


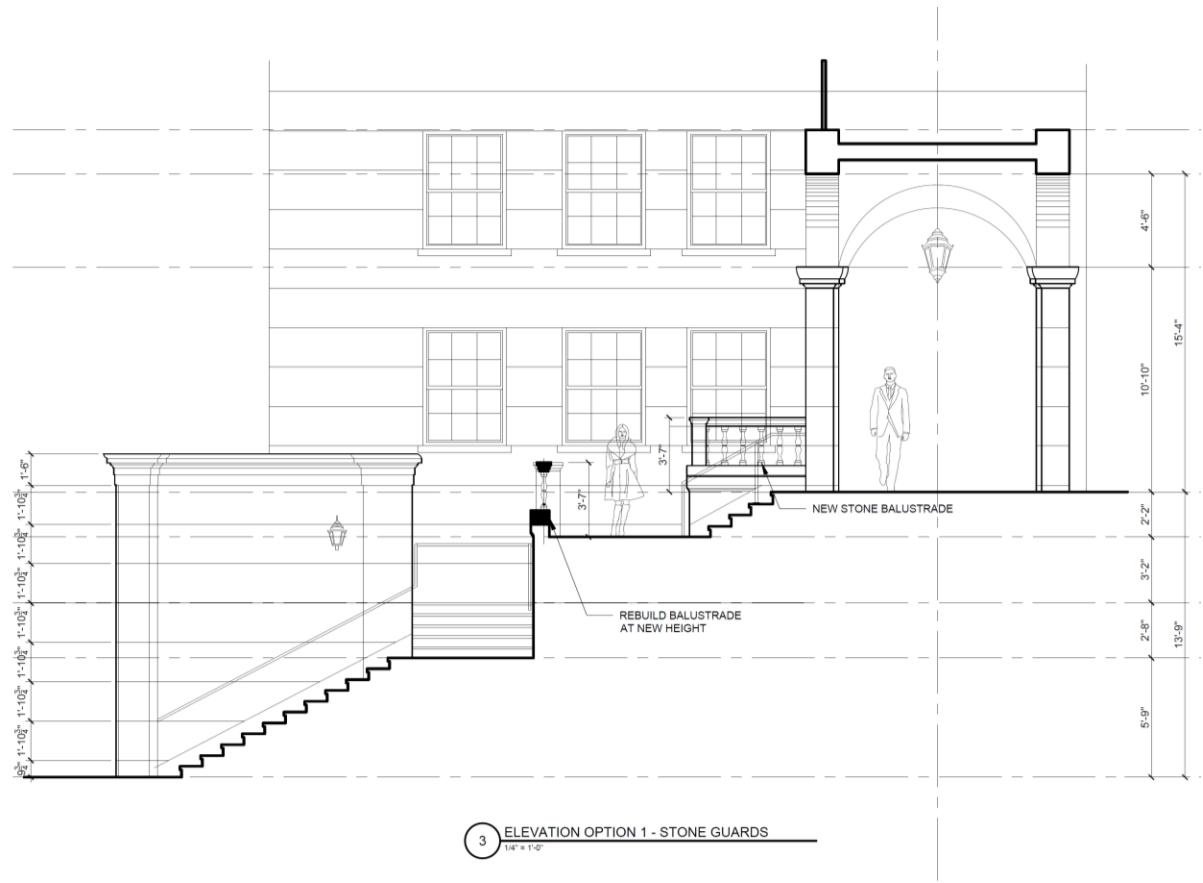
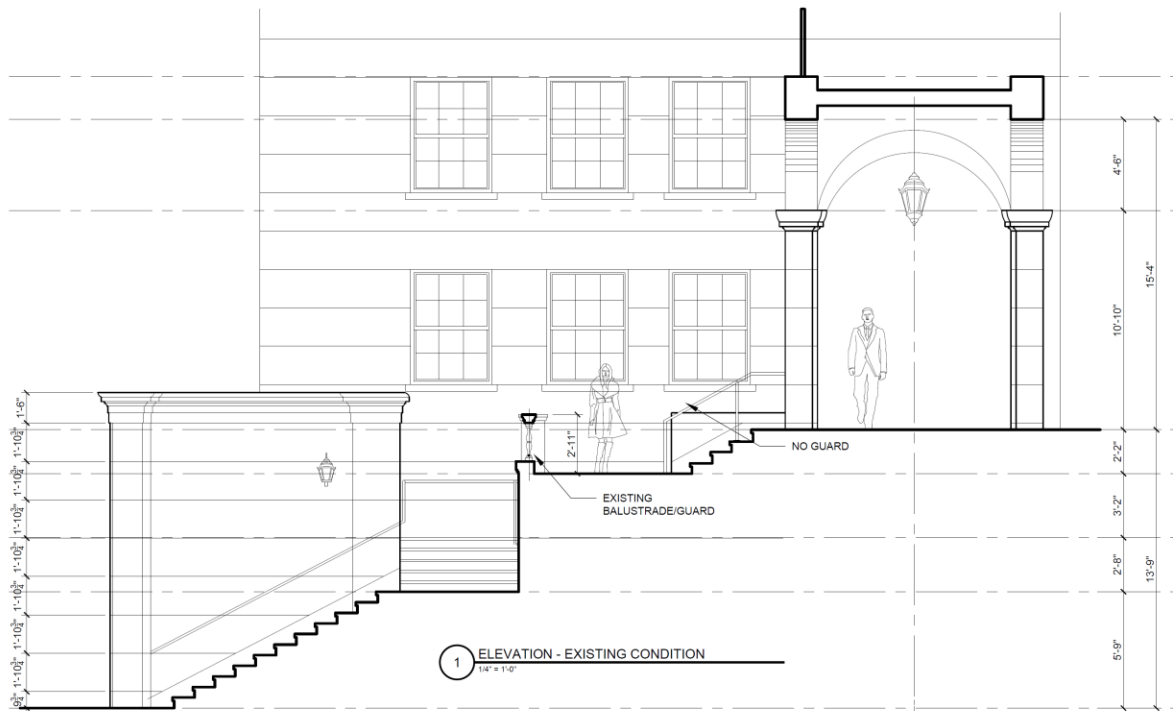


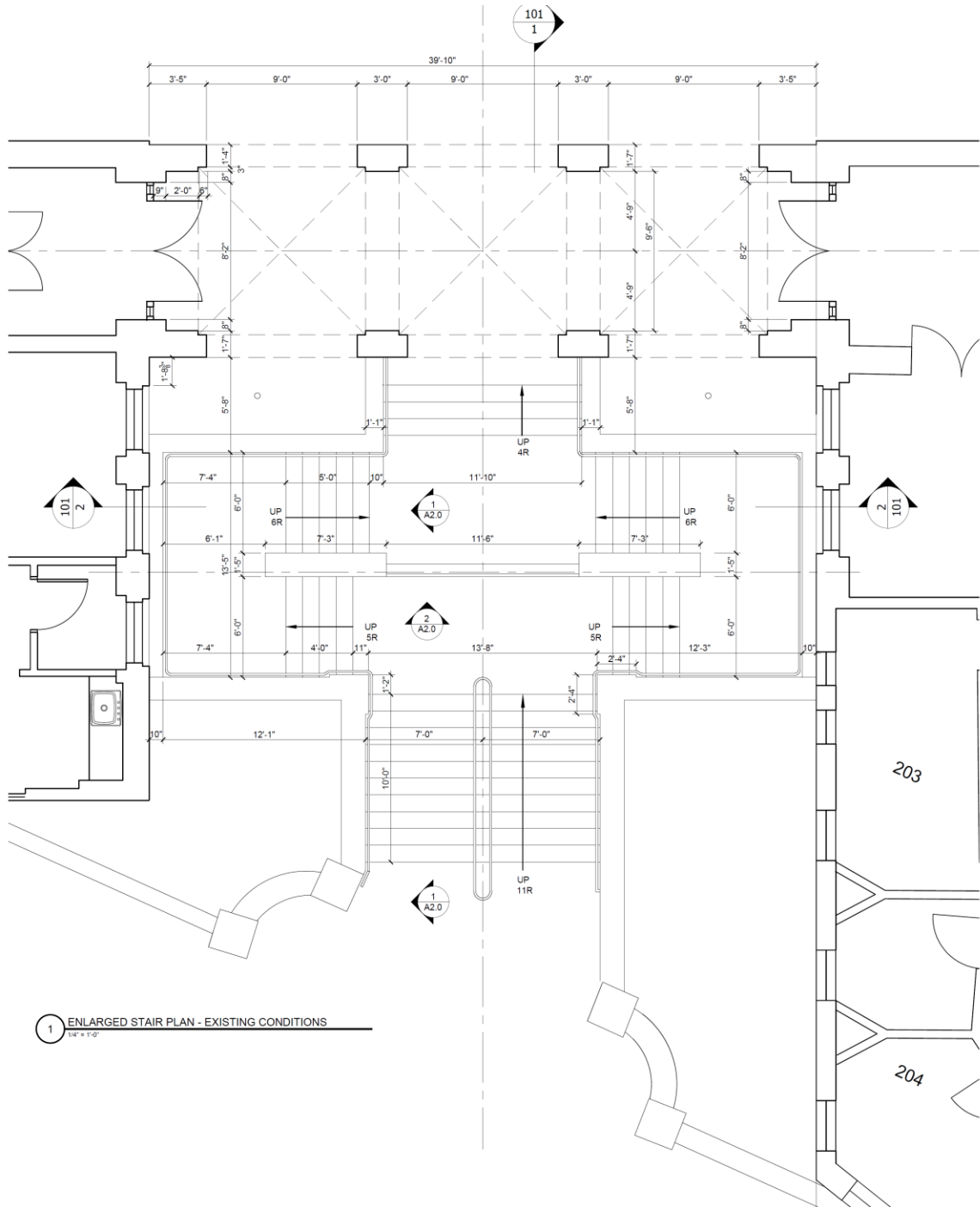
3 EXISTING CONDITION WITH NO GUARD



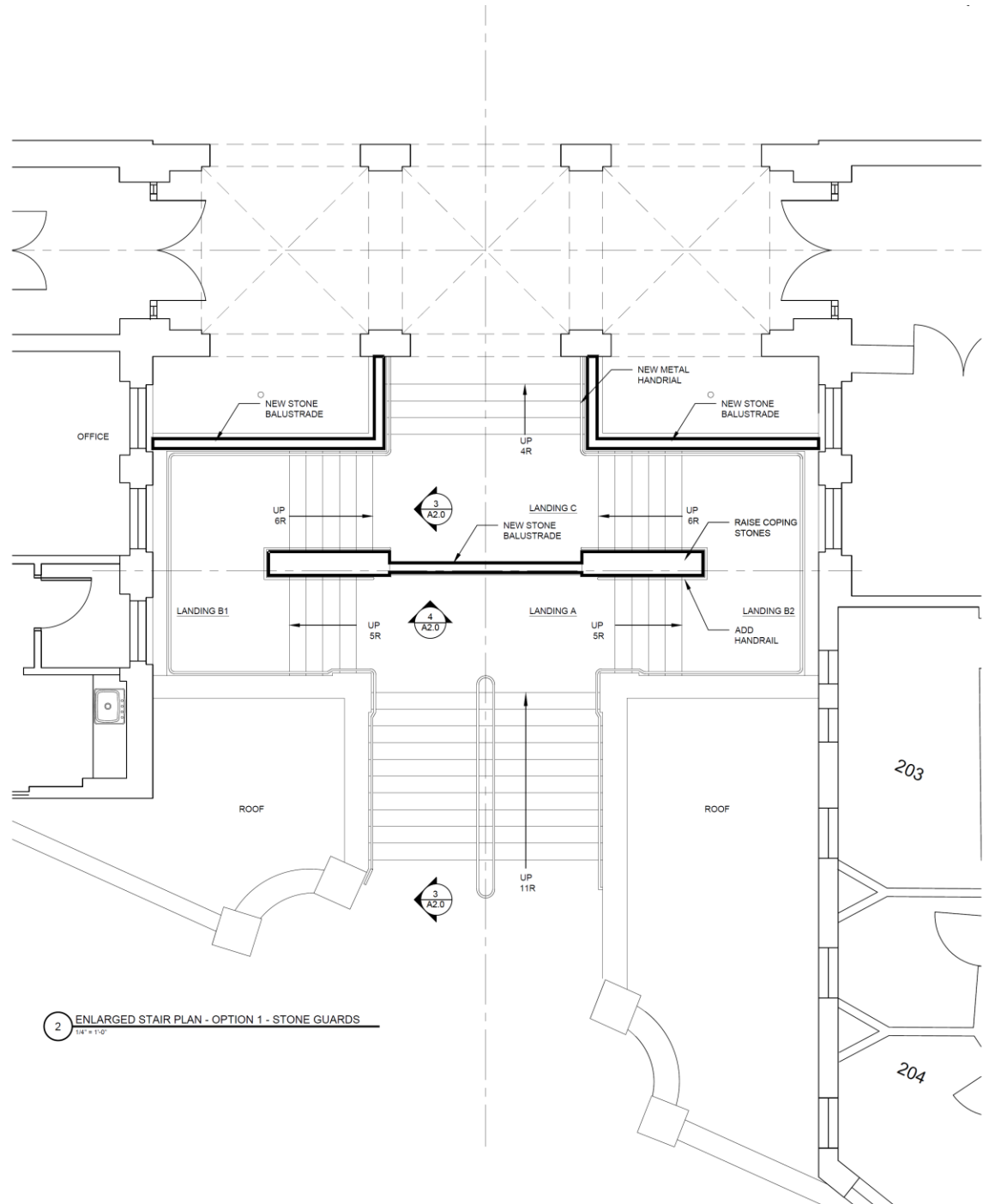
3 EXISTING DETERIORATED LIMESTONE BALUSTRADES



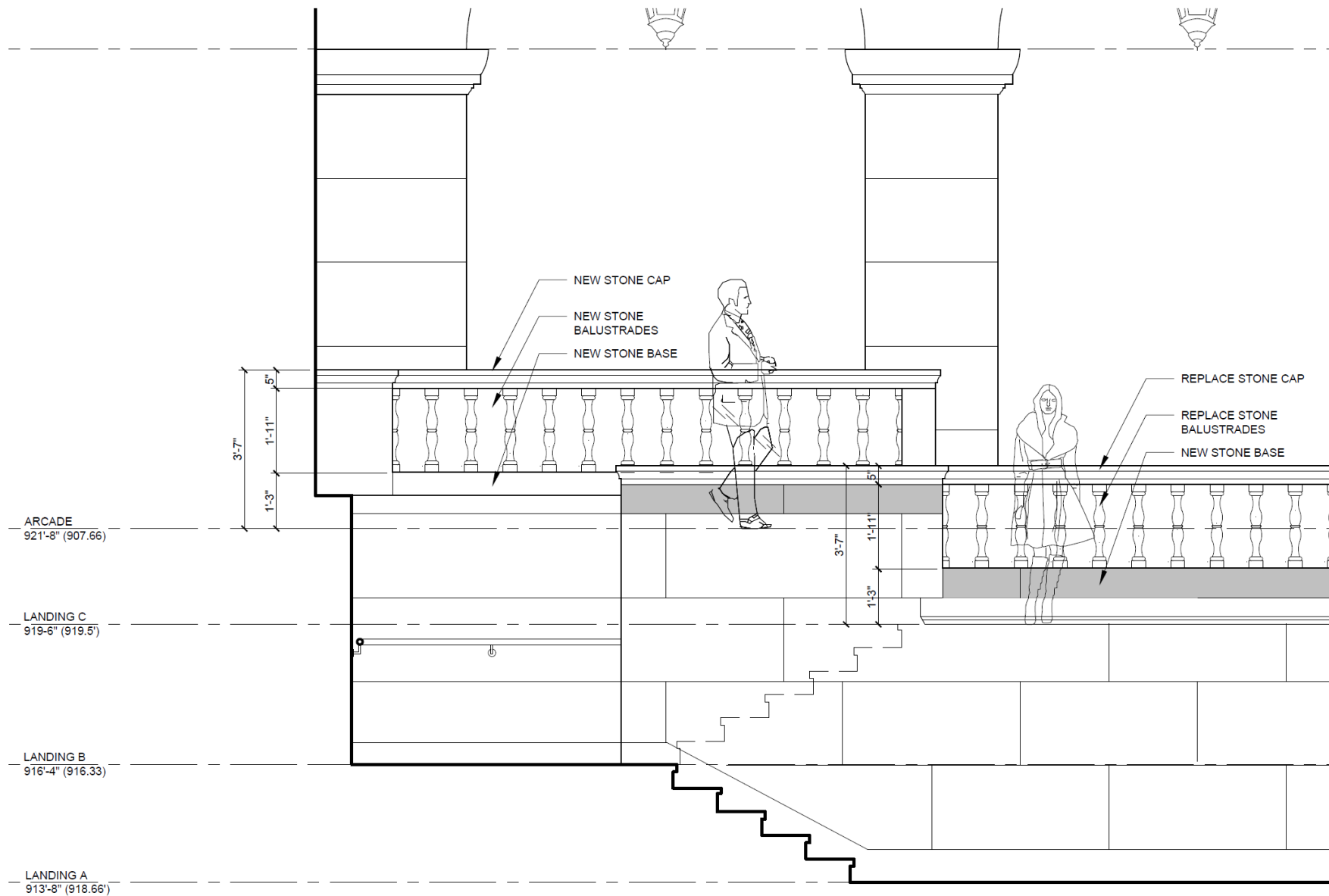




1 ENLARGED STAIR PLAN - EXISTING CONDITIONS
1/4" = 1'-0"



2 ENLARGED STAIR PLAN - OPTION 1 - STONE GUARDS
1/4" = 1'-0"



1 ELEVATION OPTION 1 - ENLARGED
 1/2" = 1'-0"



UNIVERSITY OF PITTSBURGH









A black metal sign with the University of Pittsburgh crest and the text "UNIVERSITY OF PITTSBURGH" is mounted on a stone wall. The crest is circular and features a shield with various symbols, surrounded by the text "UNIVERSITY OF PITTSBURGH" and "1787".

UNIVERSITY OF PITTSBURGH

A wide, stone staircase with a metal handrail leads up to a balcony. The balcony has a stone balustrade and is flanked by two black lantern-style light fixtures. The background shows a brick building with windows and a clear blue sky. The word "Questions?" is overlaid in white text on the stone wall.

Questions?