

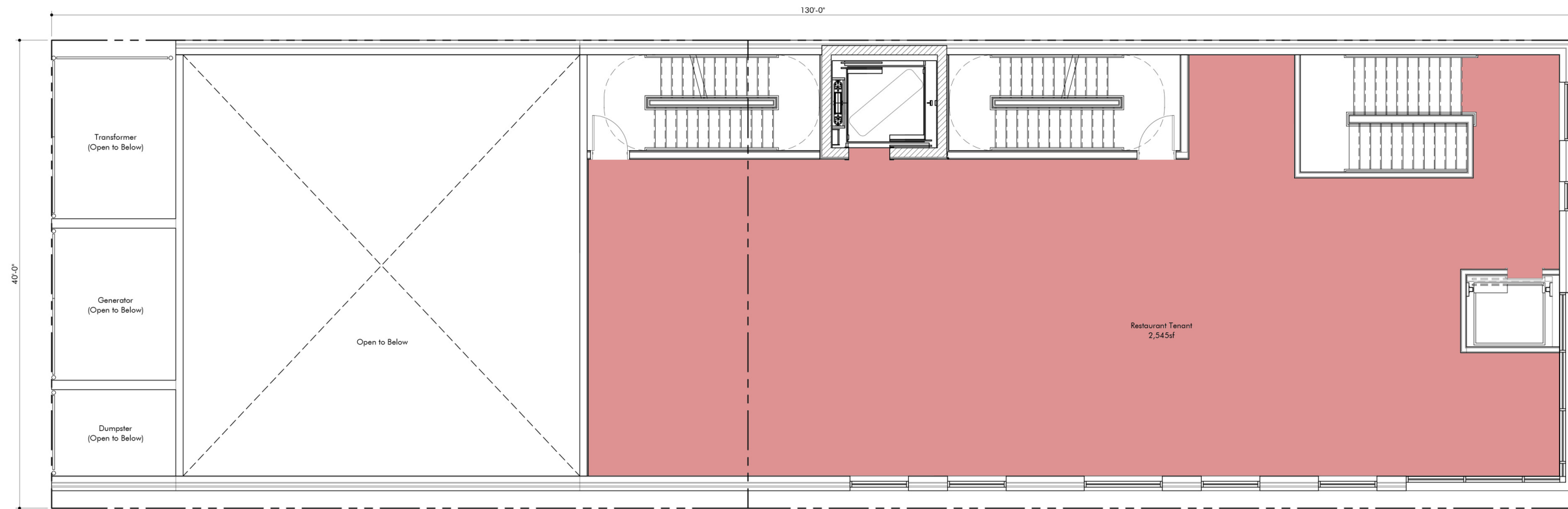
214 South Craig Street
Mixed Use Residential Development



| Building Area | | Building Area | |
|---------------|----------|---------------|---------|
| Ground Level | 4,559sf | Residential | 422sf |
| Second Level | 4,597sf | Restaurant | 1,457sf |
| Third Level | 4,772sf | Parking | 1,569sf |
| Fourth Level | 4,772sf | Circulation | 1,111sf |
| Fifth Level | 4,772sf | Total Area | 4,559sf |
| Sixth Level | 3,979sf | | |
| Total Area | 27,451sf | | |

214 South Craig Street

Mixed Use Residential Development



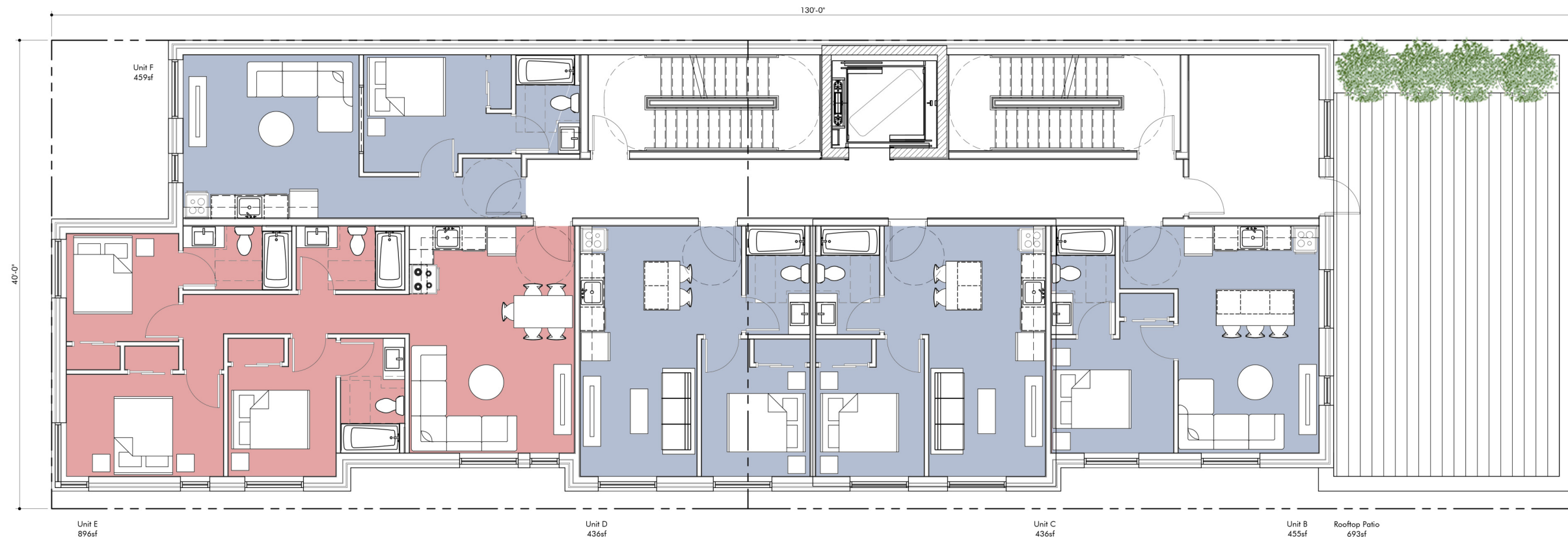
| Building Area Level 2 | |
|--------------------------|----------------|
| Residential | 0sf |
| Restaurant | 2,545sf |
| Open to Below | 1,523sf |
| Circulation | 529sf |
| Total Area | 4,597sf |



| | |
|---------------|---------|
| Building Area | |
| Level 3,4,5 | |
| Residential | 3,583sf |
| Circulation | 762sf |
| Total Area | 4,772sf |

214 South Craig Street

Mixed Use Residential Development



| Building Area Level 6 | |
|--------------------------|----------------|
| Residential | 2,684sf |
| Common | 375sf |
| Circulation | 923sf |
| Total Area | 3,979sf |



214 South Craig Street
Mixed Use Residential Development



214 South Craig Street
Mixed Use Residential Development



214 South Craig Street
Mixed Use Residential Development



214 South Craig Street
Mixed Use Residential Development