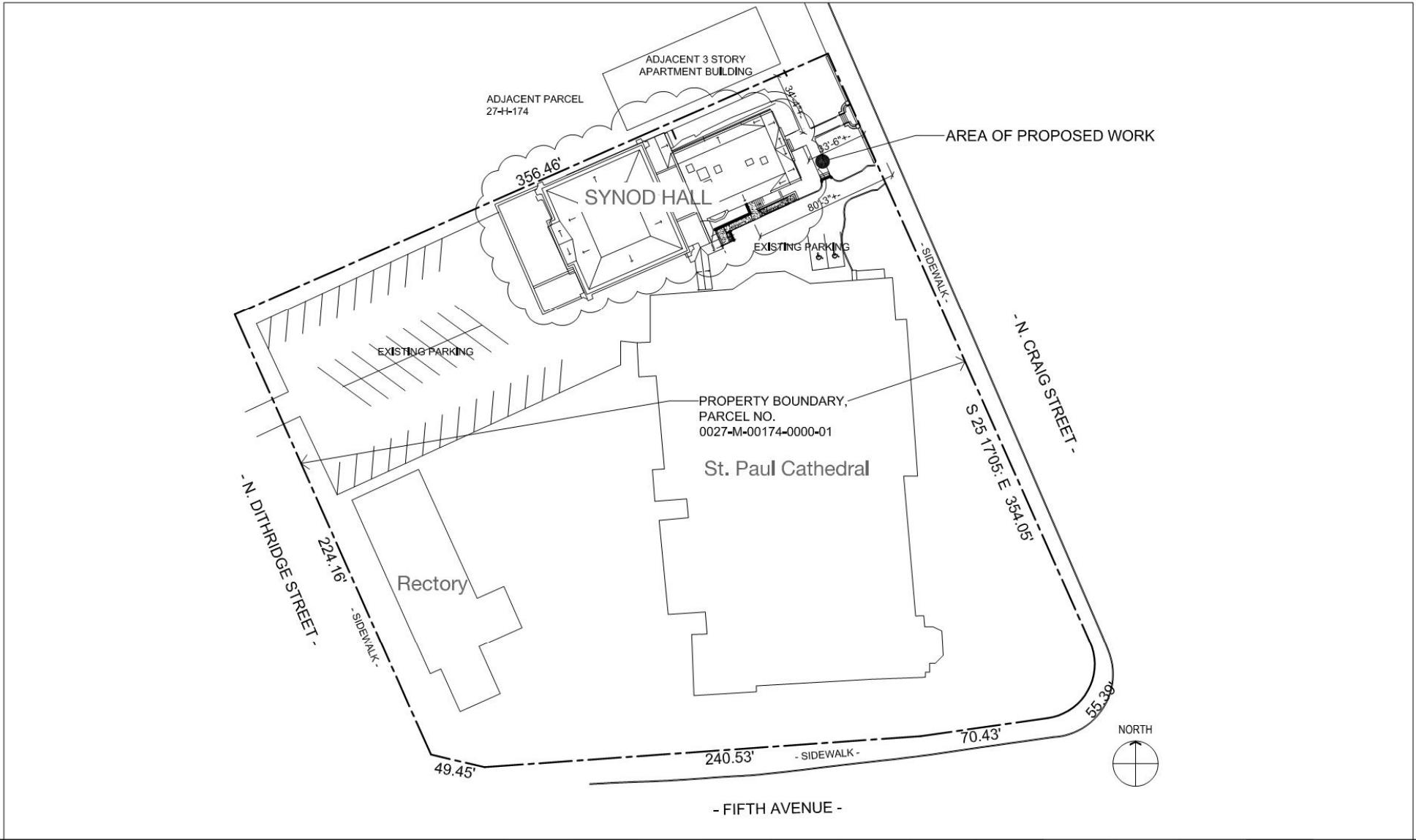




OPDC DAM PRESENTATION
PROPOSED HVAC ALTERATIONS
SYNOD HALL, ST. PAUL CATHEDRAL
125 N. CRAIG STREET



Sheet No. **S01**

Title **SITE PLAN**

Project # 21269.1

Date 2/28/2023

SCALE: 1"=50'-0" PRINTED AT 11" X 17"

0 10' 50' 100'

These drawings are instruments of the Architect's service and are the property of LGA Partners, LP. They shall not be reproduced or used in any way, whatsoever, without the written permission of LGA Partners, LP, © 2023.

SITE PLAN, HVAC ALTERATIONS
ST. PAUL SYNOD HALL
 125 N. CRAIG STREET
 PITTSBURGH, PA 15213

lga PARTNERS

1425 Forbes Ave. Suite 400 Pittsburgh, PA 15219
 P 412.243.3430 F 412.224.4747



VIEW LOOKING EAST TOWARD N. CRAIG STREET



VIEW LOOKING WEST TOWARD N. DITHRIDGE STREET

VIEWS OF EXISTING ROOF CONDITIONS



SOUTH ELEVATION



NORTH ELEVATION

GROUND LEVEL CONDENSING UNITS THAT WILL BE ELIMINATED

SUMMARY OF PROPOSED WORK

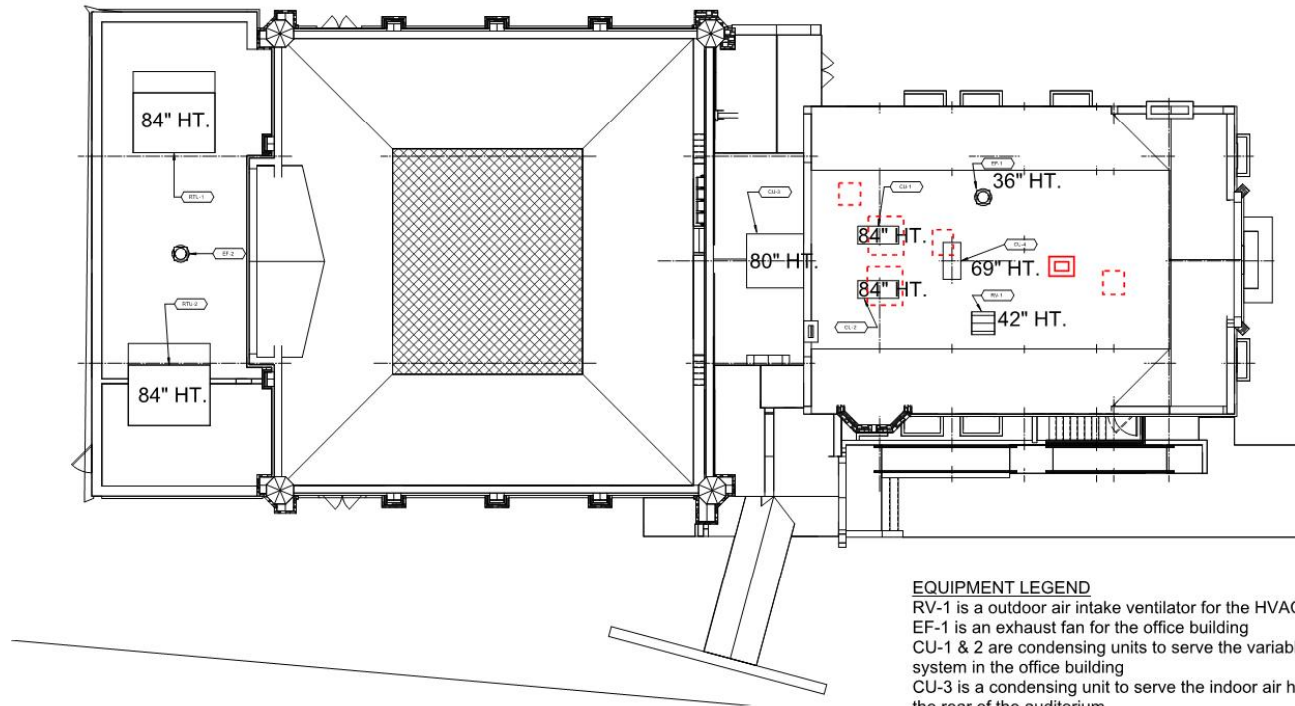
This submission illustrates miscellaneous rooftop mechanical equipment that will support renovated interior spaces. The East portion of the building contains Parish office functions that remain as presently occupied. The West portion of the building contains the Auditorium that also will remain as presently occupied.

AJACENT APARTMENT BUILDING

- N. DITHRIDGE STREET -

PARKING

- N. CRAIG STREET -



ST. PAUL CATHEDRAL

EQUIPMENT LEGEND

RV-1 is a outdoor air intake ventilator for the HVAC systems
EF-1 is an exhaust fan for the office building
CU-1 & 2 are condensing units to serve the variable refrigerant flow system in the office building
CU-3 is a condensing unit to serve the indoor air handling unit serving the rear of the auditorium
CU-4 is a condensing unit to serve the attic ventilation unit
RTU-1 & 2 are packaged rooftop HVAC units that will serve the Auditorium
EF-2 is an exhaust fan that will serve the toilet rooms in the garage area.

 - Existing Rooftop equipment

SYNOD HALL ROOF PLAN, PROPOSED WORK



lga PARTNERS

LGA Project No. 21269
2023-2-28



SYNOD HALL, VIEW WEST, DIRECTLY ACROSS N. CRAIG STREET



VIEW ACROSS N. CRAIG STREET FROM 150' SOUTH



VIEW ACROSS N. CRAIG STREET WITH PROPOSED ROOFTOP UNIT



VIEW ACROSS N. CRAIG STREET FROM 150' NORTH



VIEW ACROSS N. CRAIG STREET FROM 75' NORTH



VIEW TOWARD SYNOD HALL FROM FIFTH AVENUE AND N. DITHRIDGE STREET LOOKING NORTH



VIEW TOWARD SYNOD HALL FROM N. DITHRIDGE STREET LOOKING SOUTH



VIEW OF SYNOD HALL FROM ACROSS N. DITHRIDGE STREET LOOKING EAST



VIEW OF SYNOD HALL FROM ACROSS N. DITHRIDGE STREET
WITH PROPOSED ROOFTOP UNITS